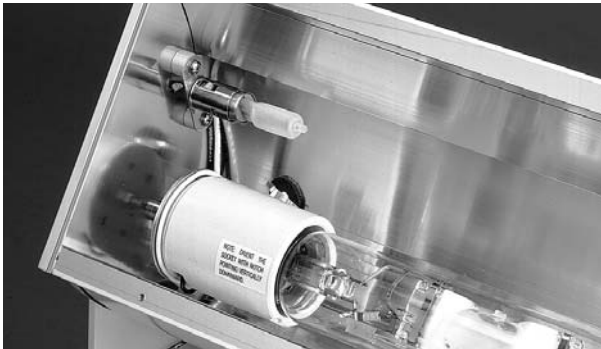


## Indoor Accessories

### Restrike Lamp Option



#### Application:

Large metal halide luminaire supplied with auxiliary tungsten halogen lamp to provide temporary light during initial startup, or during cool-down and restrike after a momentary power interruption. Hot restrike times vary by lamp wattage and luminaire size. Consult factory for further information.

Available for 70W-400W surface mounted metal halide luminaires (Styles 103, 104, 107, 108, 116, 127, 128, 137, 404, 406, 408, 409, 412 and 429). Also available on 70 and 150W integral ballast Ensonces, Styles 405, and 425.

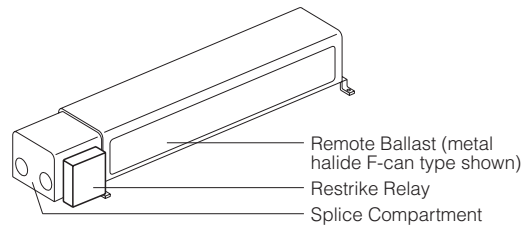
#### Construction:

DC bayonet lampholder mounted inside reflector. Restrike relay is factory installed on integral ballast units or field connected on remote ballast units. Styles 404 (2x400W only), Ensonce supplied with auxiliary lamp in an external reflector.

Auxiliary halogen lamp wattages vary: 75W halogen lamp for 70W Ensonce and 175W (nominal 12" long reflector) units, 150W halogen for 150W Ensonce, 175W (nominal 17" long reflector) and 250W units, 100W halogen for 400W units.

#### Ordering Information:

Restrike lamp and relay is specified in luminaire option code. Single-ended halogen lamp is included. See data pages for complete information.



### Fluorescent Emergency Battery Option

#### Application:

For use with most fluorescent units, the emergency battery assembly temporarily powers one lamp at reduced light output when primary input power is interrupted. Emergency battery assembly is remote, except for Styles 105, 106, 109, 110, 144, 145, 146, 305, 306, 307, and 308, where battery is integral to the luminaire housing (except quad-tube CF).

When used with remote ballast luminaires, the emergency battery reduces the allowable remote ballast distance by a length equal to twice the distance between the battery and the ballast. For integral ballast units that require remote battery pack, refer to catalog data pages for maximum allowable distance between luminaire and remote battery assembly.

#### Construction:

Each remote battery assembly is self-contained in standard F-can case. Leads exit case through flexible conduit for field connection to luminaire ballast wiring.

Assembly includes an indicator light/test switch for field installation at remote outlet box (by others). For integral units, see luminaire data pages for location of indicator lamp and test button.

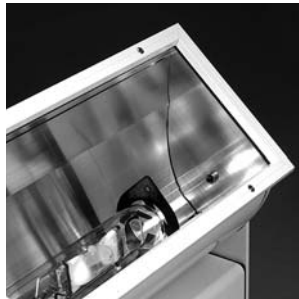
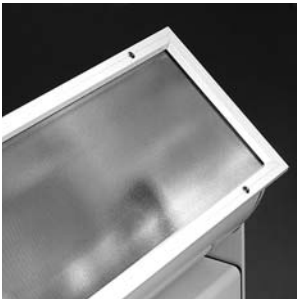
#### Ordering Information:

Emergency battery assembly is specified in luminaire option code. See data pages for complete information.

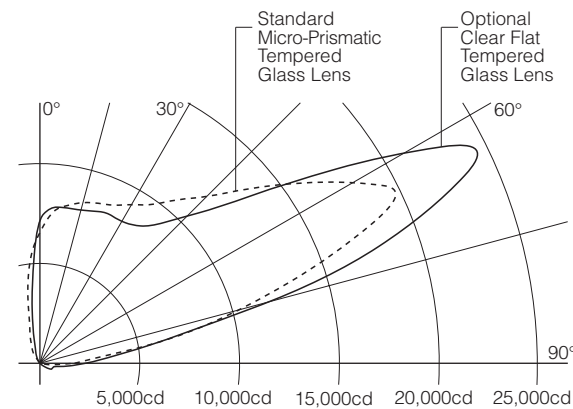
### Clear Lens Option

#### Micro-Prismatic Lens

#### Clear Flat Lens



#### Performance



#### Example:

Large nominal 17" long reflector with 400W metal halide lamp. Reflector oriented for washing light across the ceiling plane with maximum candlepower aimed at 25° above horizontal. Peak candlepower is increased approximately 22%.

#### Application:

For use with most large tungsten halogen (300W-1000W) and metal halide (175W-2x400W) luminaires where maximizing peak candlepower and beam asymmetry are important and striations and color variations are less critical (for example, lighting medium to dark colored, textured or "busy" surfaces such as brick, unfinished concrete or structural framework of skylights).

Striations and color variations will be most prominent when lighting flat, light-colored surfaces. For these applications, the standard micro-prismatic tempered glass lens is recommended to minimize striations and blend color patterns inherent in metal halide lamps.

#### Construction:

Clear flat tempered glass. Lens is mounted in the standard luminaire door frame, replacing the standard micro-prismatic tempered glass lens.

#### Ordering Information:

Clear lens is specified as a luminaire option, use option code **CL**. When clear lens is specified in combination with a cutoff visor (uplighting), use option code **VL** (includes visor).