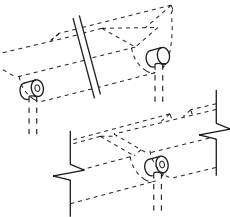


Hubs Only, Hubs with Hangers Style 164 linear fluorescent

Ordering information for uplighting, HUBS ONLY:

For use with 1/2" rigid conduit or fittings (supplied by others). Order one hub **end kit** for each individually mounted luminaire or each row. For a continuous row, order one **intermediate** hub for each additional luminaire in the row. Example: a row of six reflectors requires 1 hub end kit and 5 intermediate hubs.
Note: Locate electrical feed at end of row.

HOD _____ 000 = **End kit**
 5 Finish (includes 2 mounting hubs)

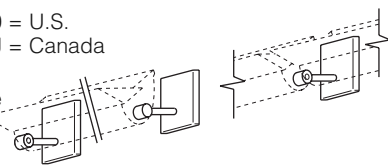


HOC _____ 000 = **Intermediate**
 5 Finish mounting hub

Ordering information for uplighting, HUBS WITH HANGERS:

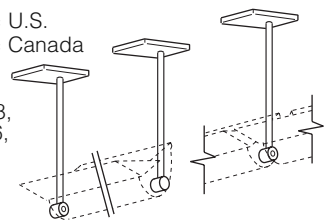
Order one hanger **end kit** for each individually mounted luminaire or each row. For a continuous row, order one **intermediate** hanger for each additional luminaire in the row. Example: three rows of four reflectors requires 3 end kits and 9 intermediate hangers. **Note: Hubs included. End kit includes one electrical feed hanger – locate at end of row.**

HB _____ 00 _____ = Outdoor **surface** hanger
 0 = U.S.
 J = Canada
 5 Finish
 A = Intermediate
 B = End kit



HBC = Outdoor **cantilever** hanger, **intermediate**
 HBD = Outdoor **cantilever** hanger, **end kit/pair**

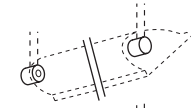
HB _____ _____ _____ = Outdoor **pendant** hanger
 0 = U.S.
 J = Canada
Length, in inches, specify 18, 24, 30, 36, 42 or 48
 5 Finish
 F = Intermediate
 G = End kit



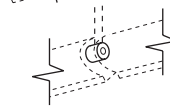
Ordering information for lighting the vertical plane, HUBS ONLY:

For use with 1/2" rigid conduit or fittings (supplied by others). Order one hub **end kit** for each individually mounted luminaire or each row. For a continuous row, order one **intermediate** hub for each additional luminaire in the row. Example: a row of five reflectors requires 1 hub end kit and 4 intermediate hubs.
Note: Locate electrical feed at end of row.

HOD _____ 000 = **End kit**
 5 Finish (includes 2 mounting hubs)



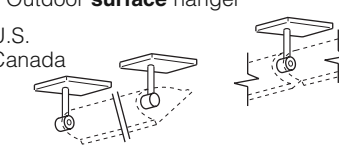
HOC _____ 000 = **Intermediate**
 5 Finish mounting hub



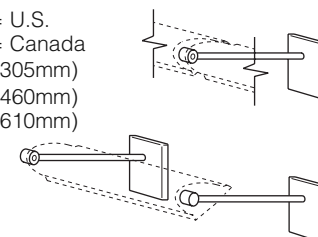
Ordering information for lighting the vertical plane, HUBS WITH HANGERS:

Order one hanger **end kit** for each individually mounted luminaire or each row. For a continuous row, order one **intermediate** hanger for each additional luminaire in the row. Example: three rows of four reflectors requires 3 end kits and 9 intermediate hangers. **Note: Hubs included. End kit includes one electrical feed hanger – locate at end of row.**

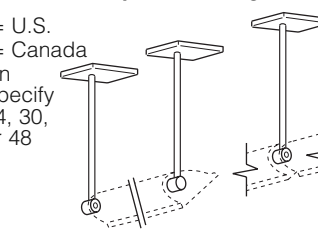
HB _____ 00 _____ = Outdoor **surface** hanger
 0 = U.S.
 J = Canada
 5 Finish
 A = Intermediate
 B = End kit



HB _____ _____ _____ = Outdoor **cantilever** hanger
 0 = U.S.
 J = Canada
 12 = 12" (305mm)
 18 = 18" (460mm)
 24 = 24" (610mm)
 5 Finish
 C = Intermediate
 D = End kit



HB _____ _____ _____ = Outdoor **pendant** hanger
 0 = U.S.
 J = Canada
Length, in inches, specify 12, 18, 24, 30, 36, 42, or 48
 5 Finish
 F = Intermediate
 G = End kit



Surface Mounting and Splice Box

For use with Style F164.

AMS _____ 00 _____ = **Surface** mounting and splice box
 0 = U.S.
 J = Canada
 Finish: 02 white, 06 dark bronze, 07 silver, 08 semi-gloss black, 12 green

