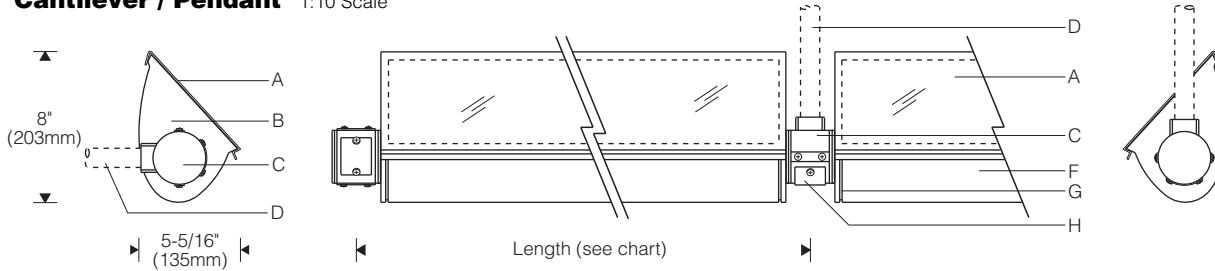
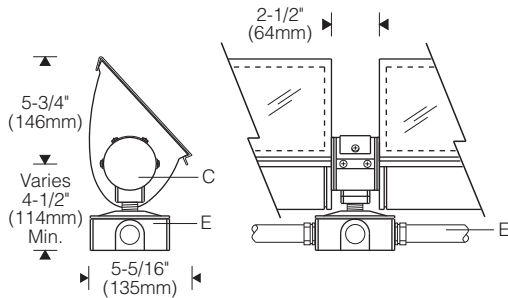




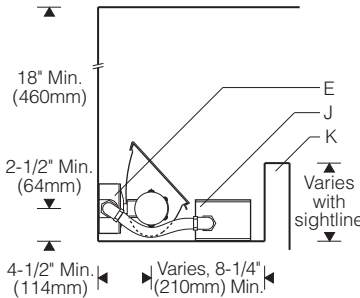
Cantilever / Pendant 1:10 Scale



Surface 1:10 Scale



Cove 1:16 Scale



Lamp Length		Length (center to center of mounting hubs)
HO	VHO	
3'	n.a.	40-3/8" (1026mm)
4'	4'	52-3/8" (1330mm)
5'	n.a.	64-3/16" (1630mm)
6'	6'	76-7/8" (1953mm)
8'	8'	100-7/8" (2562mm)



Specifications

- A** UV and impact resistant acrylic snap-on lens with EPDM gasket
- B** Die-cast aluminum end plates
- C** Cast aluminum mounting hubs (black)
- D** 3/4" rigid conduit pendant or cantilever supports (by others)
- E** Outlet boxes, liquidtight conduit and fittings (by others)
- F** Specular extruded aluminum reflector
- G** Aluminum reveal plates (black)
- H** Gasketed splice access cover plate
- J** Remote ballast in weatherproof aluminum enclosure
- K** Architectural cove (for design guidance, see Applications Section)

Finish:

Exterior surfaces - 6 stage pretreatment and electrostatically applied thermoset polyester powder coating for a durable abrasion, fade and corrosion resistant finish. Choice of semi-gloss colors. Mounting hubs finished black.

Reflector and internal end plates - extruded high purity aluminum with clear anodized specular finish. All hardware and components - non corrosive stainless steel or aluminum.

Snap-on lens - composite of impact resistant and UV stabilized acrylic. EPDM gasket for watertight operation when facing upward.

Standard:

UL listed or CSA certified for wet locations when mounted horizontally. For positions other than horizontal, consult factory.

Mounting:

Cast aluminum mounting hubs with internal 3/4" NPT threaded entry. 3/4" rigid conduit supports or fittings (by others). Allow 5 lbs/foot of reflector (example: 8' unit x 5 = 40 lbs).

One hub supplied with each reflector. Hub attaches to an adjacent reflector to form a continuous row. End-of-row mounting kit includes one hub and two end caps (ordered separately, one kit required for each individually mounted unit or for each continuous row).

Reflector is adjustable about the hubs. Aiming is locked in position with screws in the hubs.

Electrical:

Use 90°C wire for supply connections. Wire leads exit one end of reflector for splicing within mounting hub. Removable cover plate on hub allows access to splices.

Remote magnetic HPF thermally protected class P ballast rated for -20°F/-29°C starting. Weatherproof aluminum enclosure includes three 7/8" dia. entries and one 3/8" liquidtight conduit connector. **Maximum wire length between ballast and fixture using #14 wire is 21' (6.4m).**

For complete ballast specifications, see Accessories Section.

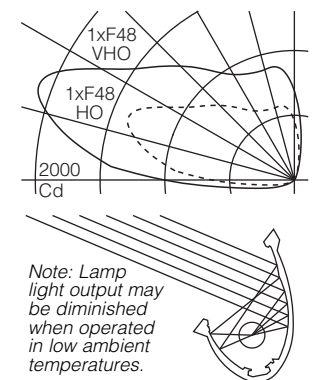
Features

- Powerful HO, VHO fluorescent for uplighting of soffits, vaults or canopies from minimal setbacks
- Snap-on acrylic lens with EPDM gasket - watertight for upward orientations; suitable for cold weather operation
- Durable aluminum construction - die-cast end plates and mounting hubs, extruded reflector; powder coat finish



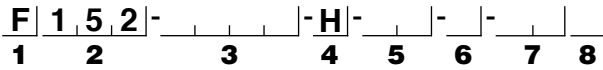
Performance

Two parabolic reflector sections drive light across the overhead plane from one edge. An elliptical section redirects its light to a parabola and shields the lamp. Asymmetry is maximized resulting in high beam efficiency and superior surface uniformity. The fast "runback" minimizes wasted spill light.



For complete photometrics, visit www.elliptipar.com

To form a Catalog Number



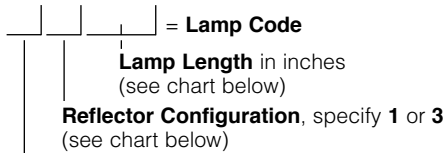
1 Source

F = Linear fluorescent

2 Style

152 = Large outdoor, remote ballast

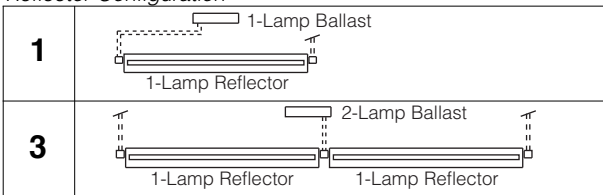
3 Lamp



F = T12 HO Fluorescent
G = T12 VHO Fluorescent (48", 72" and 96" lamps only)

Example: **F396** = two nominal 8' reflectors, each with one 96" T12 HO fluorescent lamp; 2-lamp remote ballast

Reflector Configuration



Lamp Length	Wattage	Lamp Number
HO Fluorescent (800ma)		
36"	45	F36T12/HO
48"	60	F48T12/HO
60"	75	F60T12/HO
72"	85	F72T12/HO
96"	110	F96T12/HO
VHO Fluorescent (1500ma)		
48"	110	F48T12/VHO
72"	160	F72T12/VHO
96"	215	F96T12/VHO

For complete lamp and ballast information, see Accessories Section. HO and VHO lamps by others.

Project: _____

4 Mounting

H = Mounting hub with 3/4" NPT internal thread for 3/4" rigid conduit supports or fittings (by others); one hub supplied per reflector

Note: Order **End-of-row mounting kit** separately. One kit required for each individually mounted unit or each continuous row.

Note: For positions other than horizontal, consult factory.

5 Finish

- 02 = Semi-gloss white
- 06 = Dark bronze
- 07 = Silver
- 08 = Semi-gloss black
- 12 = Green
- 99 = Custom RAL or computer matched color to be specified, consult sales representative.

Note: Mounting hubs finished black

6 Voltage/Ballast

- Magnetic
- A = 120V
 - B = 277V
 - H = 347V*

*Not available for configuration F136, one-lamp 36" HO, configuration G148, one-lamp 48" VHO or configuration G172, one-lamp 72" VHO.

7 Option (See Accessories Section for specifications)

- 00 = No options
- 0D = Remote ballast for dry indoor location
- XX = For modification not listed, include detailed description. Consult factory prior to specification.

8 Standard

- 0 = UL, Underwriters Laboratories
- J = CSA, Canadian Standards Association

Example

F152 - F348 - H - 08 - B - 000

Large outdoor model. Two nominal 4 foot reflectors, each for use with one 48" HO fluorescent lamp. Mounting hubs for 3/4" rigid conduit supports (by others). Black powder coat finish, black mounting hubs. Remote 2-lamp 277V ballast in weatherproof enclosure. UL.
(Order **End-of-row mounting kit** separately. One kit required for each individually mounted unit or each continuous row.)

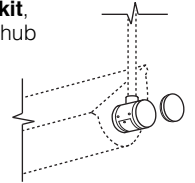
Type: _____

Accessories

Order separately. See Accessories Section for specifications.

VEORK08 = End-of-row mounting kit, includes one mounting hub and two end caps, semi-gloss black

0 = UL
J = CSA



AFK000X = Ballast fuse kit

0 = UL
J = CSA

