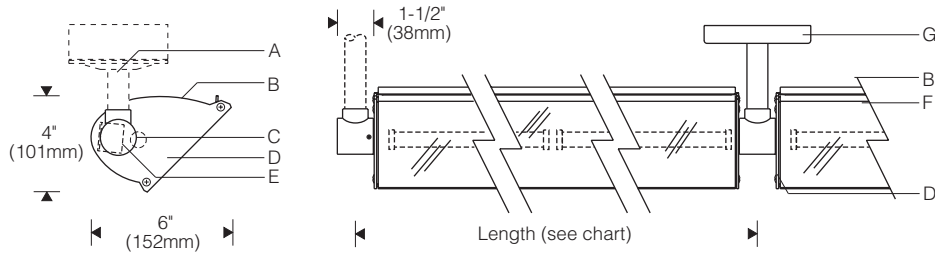
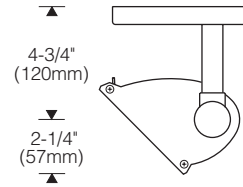


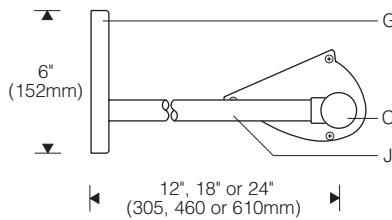
Style F164 1:8 Scale (Lighting downward)



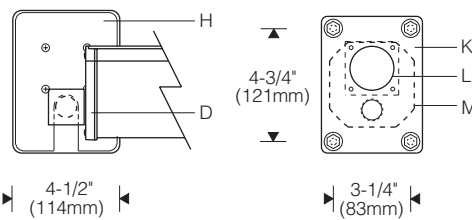
Surface Hanger



Cantilever Hanger (Lighting upward)



Mounting Plate



Lamp Length	Length (center to center of hubs)
1 x 2'	25-1/4" (640mm)
1 x 3'	37" (940mm)
1 x 4'	48-3/4" (1240mm)
1 x 5'	60-5/8" (1540mm)
2 x 3'	72" (1830mm)
2 x 4'	96" (2440mm)

Specifications

- A** 1/2" fittings, rigid conduit supports (by others)
- B** Specular extruded aluminum reflector
- C** Aluminum hubs with silicone o-ring gaskets (ordered separately)
- D** Die-cast aluminum end plates
- E** Integral electronic ballast / internal wireway
- F** UV and impact resistant acrylic snap-on lens with silicone gasket
- G** Cantilever, pendant or surface hangers with hubs (ordered separately)
- H** Aluminum cover (conceals fasteners)
- J** Tubular steel arm or stem
- K** Die-cast aluminum mounting plate (fasteners by others)
- L** Outlet box access with gasketed cover (electrical feed only)
- M** Outlet box (by others)

Finish:

Exterior surfaces – 6 stage pretreatment and electrostatically applied thermoset polyester powder coating for a durable abrasion, fade and corrosion resistant finish. Choice of semi-gloss colors (see ordering information).

Reflector – extruded high purity aluminum with clear anodized specular finish. All hardware and components – non-corrosive stainless steel or aluminum.

Snap-on lens – composite of impact resistant and UV stabilized acrylic. Silicone gasket for watertight operation when facing upward or downward.

Electrical:

Use 90C° wire for supply connections and through wire.

Electrical feed hanger (optional) mounts over recessed outlet box (by others) with gasketed access cover. Internal wireway allows supply wiring to be fed through mounting hub to adjacent units. Locate electrical feed at end of row.

Integral electronic HPF thermally protected class P ballast rated for 0°F/-18°C starting.

For complete ballast specifications, see Accessories Section.

Mounting:

1-1/2" diameter x 1-1/2" aluminum hubs with 1/2" NPT threaded entry. Reflector aiming is adjustable – locks with set screws. Specify with hubs only for use with 1/2" rigid conduit or fittings supplied by others.

Optional accessory surface, pendant or cantilever hangers (ordered separately). Hangers include aluminum mounting plate, cover plate and hub with 7/8" O.D. steel arm/stem (1/4-20 fasteners by others). Suitable backing structure required – allow 3 lbs/ft (21.6kg/m) (8' unit = 24 lbs).

Specify end kit or intermediate hubs/hangers.

Standard:

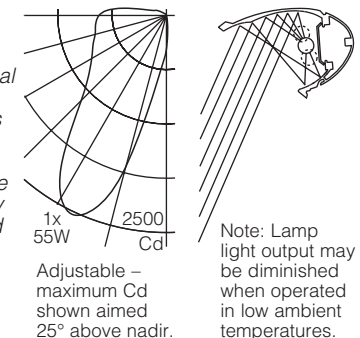
UL listed or CSA certified for wet locations when mounted horizontally. For positions other than horizontal, consult factory.

Features

- Reflector optimized for T5 – precise optical control for lighting facades, walls and signs from minimal setbacks
- Snap-on acrylic lens – watertight, facing up or down
- Rugged all aluminum, stainless steel construction – polyester powder coat exceeds 1000 hour salt spray test
- Versatile – surface, cantilever or pendant mount; thru wiring

Performance

Two parabolic reflector sections drive light down (or up) the vertical plane from one edge. An elliptical section redirects its light to a parabola and shields the lamp from normal viewing angles. The fast "runback" minimizes glare and spill light. Asymmetry of the beam is maximized resulting in high beam efficiency and superior surface uniformity.



For complete photometrics, visit thelightingquotient.com



Cradle to Cradle Certified^{CM} is a certification mark licensed by the Cradle to Cradle Products Innovation Institute.



To form a Catalog Number

F | 1 | 6 | 4 | - | | | | | - | H | - | | | | | - | | | | |
 1 2 3 4 5 6 7 8

1 Source

F = Linear fluorescent

2 Style

164 = Medium outdoor, integral ballast

3 Lamp

 | | | | | = T5 Fluorescent Lamp Code
 | | | | | = Lamp Wattage (see chart below)

Lamp Configuration

- T1 = Single-lamp cross section, 1-lamp in length
- T2 = Single-lamp cross section, 2-lamp in length
- D2 = Dual-lamp cross section, 1-lamp in length
- D4 = Dual-lamp cross section, 2-lamp in length

Example: T255 = Nominal 8' (2.4m) housing with (2) 54W T5HO lamps (in length)

Length (nominal)	T5		T5HO*	
	Code	Lamp(s)	Code	Lamp(s)
T5 Fluorescent				
2' (0.6m)	T114	1 x F14T5	T124	1 x F24T5/HO
	D214	2 x F14T5	D224	2 x F24T5/HO
3' (0.9m)	T121	1 x F21T5	T139	1 x F39T5/HO
	D221	2 x F21T5	D239	2 x F39T5/HO
4' (1.2m)	T128	1 x F28T5	T155	1 x F54T5/HO
	D228	2 x F28T5	D255	2 x F54T5/HO
5' (1.5m)	T135	1 x F35T5	T180	1 x F80T5/HO
	D235	2 x F35T5	D280	2 x F80T5/HO
6' (1.8m)	T221	2 x F21T5	T239	2 x F39T5/HO
	D421	4 x F21T5	D439	4 x F39T5/HO
8' (2.4m)	T228	2 x F28T5	T255	2 x F54T5/HO
	D428	4 x F28T5	D455	4 x F54T5/HO

For complete lamp and ballast information, see Accessories Section. Standard T5 lamp color is 3000K/80+ CRI. T8 lamps by others.

* NEW T5HO amalgam lamps are available that produce > 90% of full light output over a broader temperature range than standard lamps – see thelightingquotient.com or consult factory for specifications.

Project: _____

4 Mounting

H = For use with mounting hubs (1/2" rigid conduit supports or fittings supplied by others); or for use with accessory surface, pendant or cantilever hangers.

Note: Order either hubs only or hubs with hangers separately. For reflector positions other than horizontal, consult factory.

5 Finish

- 02 = Semi-gloss white
- 06 = Dark bronze
- 07 = Silver
- 08 = Semi-gloss black
- 12 = Green
- 99 = Custom RAL or computer matched color to be specified, consult sales representative.

6 Voltage/Ballast

- Electronic
- 1 = 120V
- 2 = 277V
- 3 = 347V (Canada)*
- Dimming
- Application is limited due to minimum 50°F (10°C) starting temperature; consult factory.

*Consult sales representative for availability of 347V.

7 Option

- 00 = No options
- V0 = Extruded aluminum cutoff visor (suggested when additional shielding is desired – see Uplighting page U-2.2 for additional information)
- XX = For modification not listed, include detailed description. Consult factory prior to specification.

8 Destination Requirement

- 0 = UL listed or CSA certified for U.S.
- J = UL listed or CSA certified for Canada

Example

F164 - T255 - H - 12 - 1 - 000

Medium outdoor fluorescent for use with two 54W T5HO lamps in nominal 8 foot reflector. For use with mounting hubs (1/2" rigid conduit supports by others) or accessory hangers. Green powder coat finish. Integral 2-lamp 120V electronic ballast. UL listed or CSA certified for U.S. Order end kit and intermediate mounting hubs or hangers separately.

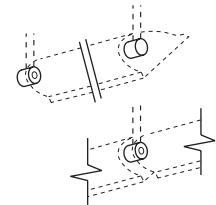
Type: _____

Hubs Only (order separately)

For use with 1/2" rigid conduit or fittings (supplied by others). Order one hub end kit for each individually mounted luminaire or each row. For a continuous row, order one intermediate hub for each additional luminaire in the row. Example: a row of five reflectors requires 1 hub end kit and 4 intermediate hubs. Note: Locate electrical feed at end of row.

HOD _____ 000 = End kit (includes 2 mounting hubs)

HOC _____ 000 = Intermediate mounting hub



Hubs with Hangers (order separately)

Order one hanger end kit for each individually mounted luminaire or each row. For a continuous row, order one intermediate hanger for each additional luminaire in the row. Example: two rows of four reflectors requires 2 end kits and 6 intermediate hangers. Note: Hubs included. End kit includes one electrical feed hanger – locate at end of row.

- HBA Surface hanger (intermediate)
- HBB Surface hanger (end kit/pair)
- HBC Cantilever hanger (intermediate)
- HBD Cantilever hanger (end kit/pair)
- HBF Pendant hanger (intermediate)
- HBG Pendant hanger (end kit/pair)

AMS _____ 00 _____ = Surface mounting and splice box
 0 = U.S.
 J = Canada

Finish: 02 white, 06 dark bronze, 07 silver, 08 semi-gloss black, 12 green

Accessories

Order separately. See Accessories Section for specifications.

AFK000X _____ = Ballast fuse kit
 0 = U.S.
 J = Canada



Certain products illustrated may be covered by applicable patents and patents pending. These specifications supersede all prior publications and are subject to change without notice. Copyright © 2011 Sylvan R. Shemitz Designs, Inc., all rights reserved.

