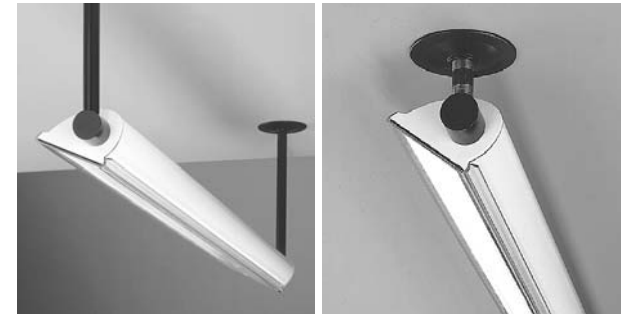
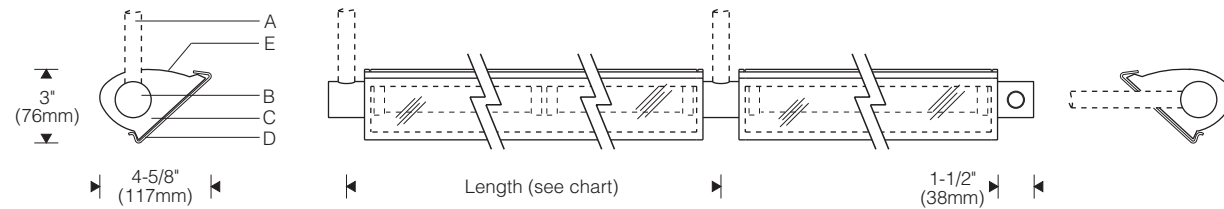
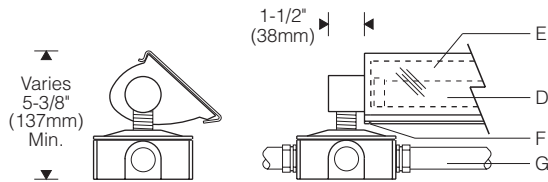


Style 151: Lighting Downward 1:8 Scale



Lighting Upward 1:8 Scale



Lamps	Length (center to center of hangers)	
	T8	T5
1 x 2'	27-1/8" (689mm)	25-1/16" (636mm)
1 x 3'	39-1/8" (994mm)	36-7/8" (936mm)
1 x 4'	51-1/8" (1299mm)	48-5/8" (1235mm)
1 x 5'	62-15/16" (1598mm)	60-5/8" (1539mm)
2 x 3'	75-5/8" (1921mm)	72-5/8" (1884mm)
2 x 4'	99-5/8" (2530mm)	96-5/8" (2454mm)
2 x 5'	123-5/8" (3140mm)	120-5/8" (3063mm)



Specifications

- A** 1/2" rigid conduit pendant or cantilever supports (by others)
- B** Machined aluminum mounting hubs with o-ring gaskets (order separately)
- C** Die-cast aluminum end plates
- D** UV and impact resistant acrylic snap-on lens with EPDM gasket
- E** Specular extruded aluminum reflector
- F** Aluminum reveal plates (black)
- G** Outlet boxes, liquidtight conduit and fittings (by others)

Finish:

Exterior surfaces – 6 stage pretreatment and electrostatically applied thermoset polyester powder coating for a durable abrasion, fade and corrosion resistant finish. Choice of semi-gloss colors (see ordering information).

Reflector – extruded high purity aluminum with clear anodized specular finish. All hardware and components – non-corrosive stainless steel or aluminum.

Snap-on lens – composite of impact resistant and UV stabilized acrylic. EPDM gasket for watertight operation when facing upward or downward.

Mounting:

Machined aluminum mounting hubs (ordered separately) with internal 1/2" NPT threaded entry. 1/2" rigid conduit supports or fittings (by others). Allow 2.5 lbs/foot of reflector (example: 8' unit x 2.5 = 20 lbs).

Specify intermediate and end hubs. Reflector is adjustable about the hubs. Aiming is locked in position with set screws in the hubs.

Electrical:

Use 90°C wire for supply connections.

Remote electronic HPF thermally protected class P ballast rated for 0°F/-18°C starting. Weatherproof aluminum enclosure includes three 7/8" diameter entries and one 3/8" liquidtight conduit connector.

7' (2.1m) wire leads exit end of reflector. **Maximum wire length between remote ballast and fixture is 7' for two-lamp reflectors and 12' for one-lamp reflectors.**

For complete ballast specifications, see Accessories Section.

Standard:

UL listed or CSA certified for wet locations when mounted horizontally. For positions other than horizontal, consult factory.

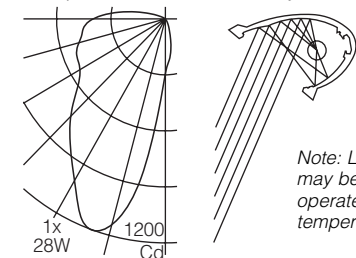
Features

- T5 for precise optical control – unequaled uniformity for lighting walls, facades and signs from minimal setbacks
- Snap-on impact and UV resistant acrylic lens with EPDM gasket – watertight for up and down orientations
- Durable aluminum construction – extruded reflector, die-cast end plates, machined hubs, powder coat finish



Performance

Two parabolic reflector sections drive light down (or up) the vertical plane from one edge. An elliptical section redirects its light to a parabola and shields the lamp from normal viewing angles. The fast "runback" minimizes glare and spill light. Asymmetry of the beam is maximized resulting in high beam efficiency and superior surface uniformity.



For complete photometrics, visit www.elliptipar.com.

To form a Catalog Number

F 1 5 1 - - - - - H - - - - -
 1 2 3 4 5 6 7 8

1 Source

F = Linear fluorescent

2 Style

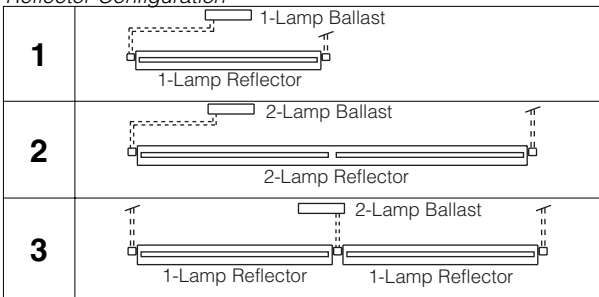
151 = Small outdoor, remote ballast

3 Lamp

____ = Lamp Code
 ____ = Lamp Wattage (see chart below)
 ____ = Reflector Configuration, specify 1, 2 or 3 (see chart below)
 A = T8 Fluorescent
 T = T5 Fluorescent

Example: **T328** = two nominal 4' reflectors, each for use with one 28W T5 lamp; one 2-lamp ballast

Reflector Configuration



Lamp Wattage

Lamp Length (nominal)	Lamp Wattage (Lamp Number)		
	T8	T5	T5HO*
2'	17 (F17T8)	14 (F14T5)	24 (F24T5/HO)
3'	25 (F25T8)	21 (F21T5)	39 (F39T5/HO)
4'	32 (F32T8)	28 (F28T5)	55 (F54T5/HO)
5'	40 (F40T8)	35 (F35T5)	80 (F80T5/HO)

For complete lamp and ballast information, see Accessories Section. Standard T5 lamp color is 3000K/80+ CRI. T8 lamps by others.

* **NEW** T5HO amalgam lamps are available that produce > 90% of full light output over a broader temperature range than standard lamps – see www.elliptipar.com or consult factory for specifications.

Project: _____

4 Mounting

H = For use with end and intermediate mounting hubs (order separately) with internal 1/2" NPT thread (1/2" rigid conduit supports or fittings by others).

Note: For positions other than horizontal, consult factory.

5 Finish

02 = Semi-gloss white
 06 = Dark bronze
 07 = Silver
 08 = Semi-gloss black
 12 = Green
 99 = Custom RAL or computer matched color to be specified, consult sales representative.

6 Voltage/Ballast

Electronic
 1 = 120V
 2 = 277V
 3 = 347V

7 Option

00 = No options
 0B = Snap-in parabolic cross baffle (internal to lens), specular aluminum, provides 35° lengthwise shielding
 0D = Remote electronic ballast for dry indoor location
 XX = For modification not listed, include detailed description. Consult factory prior to specification.

8 Destination Requirement

0 = UL listed or CSA certified for U.S.
 J = UL listed or CSA certified for Canada

Example

F151 - T235 - H - 12 - 1 - 000

Small outdoor fluorescent for use with two 35W T5 lamps in nominal 10 foot reflector. For use with mounting hubs (1/2" rigid conduit supports by others). Green powder coat finish. Remote 2-lamp 120V electronic ballast in weatherproof enclosure. UL listed or CSA certified for U.S.

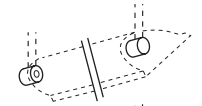
Order end and intermediate mounting hubs separately.

Type: _____

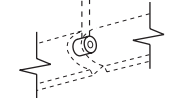
Hubs Only (order separately)

For use with 1/2" rigid conduit or fittings (supplied by others). Order one hub **end kit** for each individually mounted luminaire or each row. For a continuous row, order one **intermediate** hub for each additional luminaire in the row. Example: a row of five reflectors requires 1 hub end kit and 4 intermediate hubs.

HOD _____ 000 = End kit (includes 2 mounting hubs)
 5 Finish



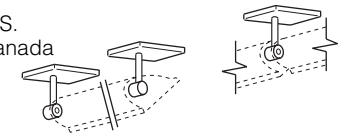
HOC _____ 000 = Intermediate mounting hub
 5 Finish



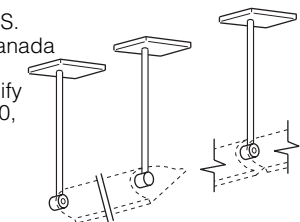
Hubs with Hangers (order separately)

Order one hanger **end kit** for each individually mounted luminaire or each row. For a continuous row, order one **intermediate** hanger for each additional luminaire in the row. Example: two rows of four reflectors requires 2 end kits and 6 intermediate hangers. Note: Hubs included. End kit includes one electrical feed hanger.

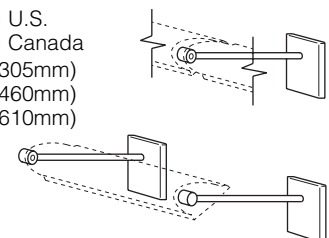
HB _____ 00 _____ = Outdoor surface hanger
 0 = U.S.
 J = Canada
 5 Finish
 A = Intermediate
 B = End kit



HB _____ _____ = Outdoor pendant hanger
 0 = U.S.
 J = Canada
 Length, in inches, specify 12, 18, 24, 30, 36, 42, or 48
 5 Finish
 F = Intermediate
 G = End kit



HB _____ _____ = Outdoor cantilever hanger
 0 = U.S.
 J = Canada
 12 = 12" (305mm)
 18 = 18" (460mm)
 24 = 24" (610mm)
 5 Finish
 C = Intermediate
 D = End kit



The external shapes of the asymmetric reflectors are trademarks of **elliptipar**. Certain products illustrated may be covered by applicable patents and patents pending. For a list of patents, see Contents pages. These specifications supersede all prior publications and are subject to change without notice. © 2009 **elliptipar**.