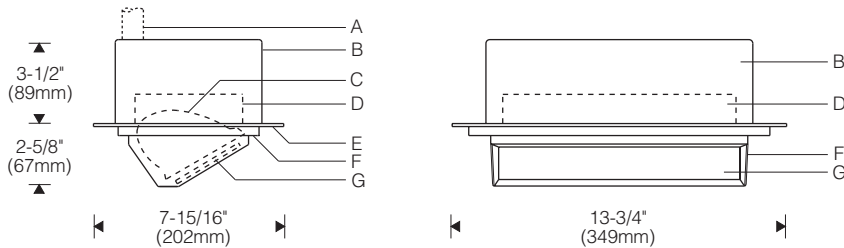
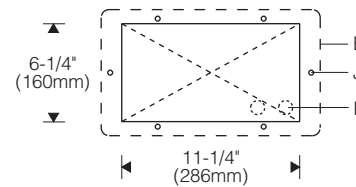


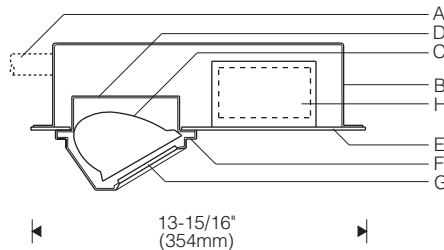
**Style 251** (Halogen, metal halide remote) 1:8 Scale



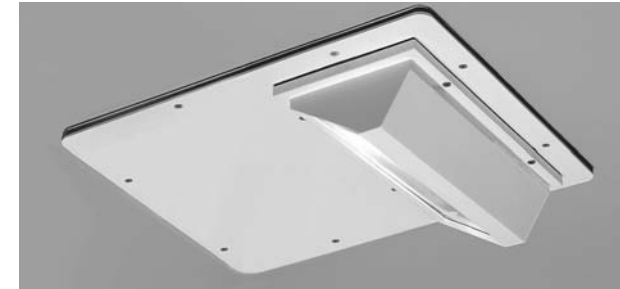
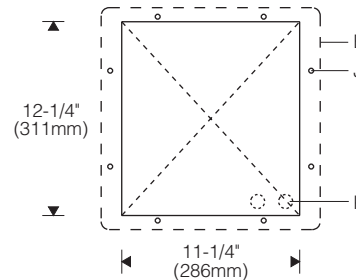
**Rough Opening** (Style 251)



**Style 253** (Metal halide integral) 1:8 Scale



**Rough Opening** (Style 253)



**Specifications**

- |   |                                  |  |   |
|---|----------------------------------|--|---|
| <b>A</b> Conduit (by others)                          | <b>D</b> Aluminum back box       | <b>G</b> Micro-prismatic, thermal and impact resistant tempered glass lens | <b>J</b> Threaded inserts for attaching recessed housing to concrete form (hardware provided) |
| <b>B</b> Seam welded stainless steel recessed housing | <b>E</b> 1/8" aluminum faceplate | <b>H</b> Integral ballast compartment (Style 253)                          | <b>K</b> 7/8" dia. conduit entries (2 on top, 2 on side)                                      |
| <b>C</b> Specular extruded aluminum reflector         | <b>F</b> Die-cast aluminum hood  |  |   |

**Features**

- Low profile focuses attention on luminous wall, not luminaire
- Evenly lights entire wall – reflector aperture is shielded
- Shallow recessed depth – ideal for poured concrete ceilings
- Built to last – all aluminum and stainless steel components
- Durable, secure – 1/8" aluminum faceplate, die-cast hood, thermal and impact resistant lens; tamper-resistant screws



**Finish:**

Exterior surfaces – 6 stage pretreatment and electrostatically applied thermoset polyester powder coating for a durable abrasion, fade and corrosion resistant finish. Choice of semi-gloss colors (see ordering information).

Reflector – extruded high purity aluminum with clear anodized specular finish. All hardware and components – non-corrosive stainless steel or aluminum. Faceplate and hood secured with tamper-resistant (Torx) screws. Hood screws are captive.

**Mounting:**

Fixture installs into poured concrete ceiling. Recessed housing mounts to concrete form prior to pouring concrete.

Full size template provided. Threaded rod and hardware included for attachment to concrete form. Recessed housing can be ordered separately for installation prior to reflector and ballast assembly, specify **OT** option code.

For mounting in framed ceiling construction in damp locations, see Style 201/205 in Lighting the Wall Section.

**Electrical:**

Use 90°C wire for supply connections. Recessed housing supplied with four 7/8" dia. conduit entries (two on top of housing, two on side).

Tungsten halogen – DC bayonet lampholder retained with patented clamping supports for maximum heat dissipation.

Metal halide – G12 lampholder for use with single ended lamp. High reactance autotransformer ballast for 35W and 70W (-20°F/-30°C starting), or electronic ballast for 35W, 70W and 150W (5°F/-15°C starting). Die-cast aluminum weatherproof ballast enclosure includes four 1/2" NPT threaded entries. Electronic ballast provides improved voltage regulation, energy savings and automatic shut-off feature to eliminate end-of-life cycling. Optional remote ballast for dry indoor location.

Style 251 – remote ballast for indoor dry location. For remote wet location ballast, consult local sales representative.

Style 253 – integral ballast.

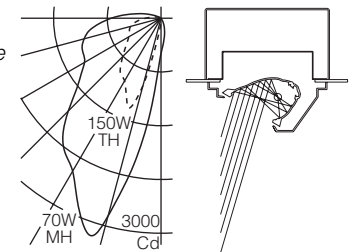
For complete ballast specifications, see Accessories Section.

**Standard:**

UL listed or CSA certified for wet locations. For installation in poured concrete only.

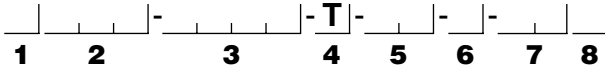
**Performance**

Two parabolic reflector sections drive light down the vertical plane from one edge. An elliptical section redirects its light to a parabola and shields the lamp. Asymmetry is maximized resulting in high beam efficiency and superior surface uniformity. The fast "runback" minimizes glare and spill light. Wide lateral distribution permits greater spacings.



For complete photometrics, visit [thelightingquotient.com](http://thelightingquotient.com)

To form a Catalog Number



**1 Source**

M = Metal halide  
T = Tungsten halogen

**2 Style**

**251** = Small outdoor semi-recessed, **remote** ballast  
**Note:** Available for tungsten halogen (no ballast) and metal halide. Remote ballast is suitable for dry indoor location. For wet location ballast, consult local sales representative.  
**253** = Small outdoor semi-recessed, **integral** ballast  
**Note:** Available for metal halide only.

**3 Lamp**

Lamp Code	Wattage	Lamp Number	Voltages	Remote Distance
Ceramic Arc Tube Pulse Start Metal Halide (80+ CRI)*				
<b>035G</b>	35	CDM35/T6/830	<b>1, 2</b>	15' (4.5m)
			<b>A, B</b>	10' (3m)
<b>070G</b>	70	CDM70/T6/830	<b>1, 2</b>	15' (4.5m)
			<b>A, B</b>	20' (6m)
<b>150G</b>	150	CDM150/T6/830	<b>1, 2</b>	15' (1.5m)
Tungsten Halogen				
<b>0100</b>	100	Q100DC	<b>A</b>	
<b>0150</b>	150	Q150DC	<b>A</b>	

For complete lamp and ballast information, see Accessories Section.  
\* Standard lamp color is 3000K/80+ CRI.

**4 Mounting**

T = Recessed housing for use in poured concrete ceiling with overlapping trim/faceplate  
**Note:** For mounting in framed ceiling construction in damp locations, see Style 201/205 in Lighting the Wall Section.

**5 Finish**

**02** = Semi-gloss white  
**06** = Dark bronze  
**07** = Silver  
**08** = Semi-gloss black  
**12** = Green  
**99** = Custom RAL or computer matched color to be specified, consult sales representative.

Project: \_\_\_\_\_

**6 Voltage/Ballast**

*Electronic*  
**1** = 120V  
**2** = 277V  
*Magnetic\**  
**A** = 120V  
**B** = 277V

\*35W or 70W Metal Halide or Tungsten Halogen (120V)

**7 Option** (See Accessories Section for specifications)

**00** = No options  
**0H** = Style 251 long distance remote metal halide ballast for dry indoor location (encapsulated magnetic ballast for 35 and 70W only),  
35W: 15' min. up to 50' max. (4.5m - 15m),  
70W: up to 50' max. (15m)  
**0T** = Luminaire supplied less recessed housing (includes reflector, ballast and faceplate assembly).  
**Note:** Requires previous installation of recessed housing kit in poured concrete (order separately, see Accessories).  
**XX** = For modification not listed, include detailed description. Consult factory prior to specification.

**8 Destination Requirement**

**0** = UL listed or CSA certified for U.S.  
**J** = UL listed or CSA certified for Canada

**Example**

**M253 - 070G - T - 07 - B - 000**

Small outdoor semi-recessed with hood for use with 70W metal halide lamp. Recessed housing for use in poured concrete. Overlapping trim/faceplate. Silver powder coat finish. Integral 277V ballast. UL listed or CSA certified for U.S.

Type: \_\_\_\_\_

**Accessories**

Order separately. See Accessories Page for specifications.

**AFK000X** = Ballast fuse kit  
**0** = U.S.  
**J** = Canada



**VRH** \_\_\_\_\_ **0** = **Recessed housing kit** with hardware, for installation in poured concrete.  
**Note:** Required only when installing recessed housing in advance of electrical and finish components. Order reflector, ballast and faceplate assembly separately, specify **0T** option code.

**T251** = tungsten halogen  
**M251** = metal halide remote  
**M253** = metal halide integral

