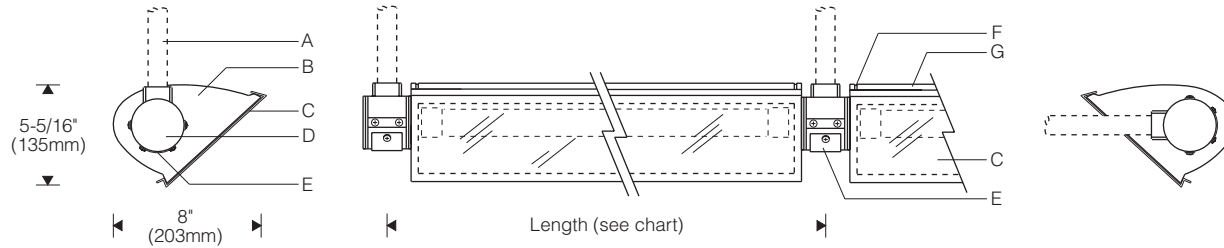
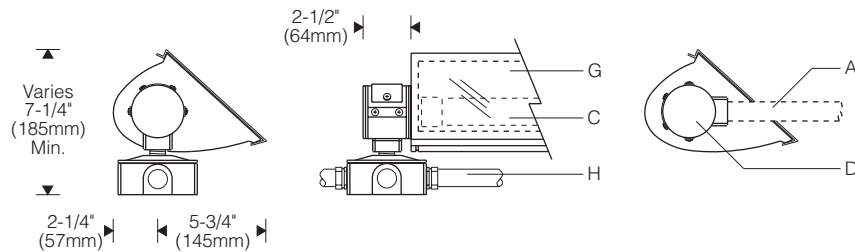




Style 152: Lighting Downward 1:10 Scale



Lighting Upward 1:10 Scale



Lamp Length		Length (center to center of mounting hubs)
HO	VHO	
3'	n.a.	40-3/8" (1026mm)
4'	4'	52-3/8" (1330mm)
5'	n.a.	64-3/16" (1630mm)
6'	6'	76-7/8" (1953mm)
8'	8'	100-7/8" (2562mm)

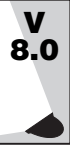


Specifications

- A** 3/4" rigid conduit pendant or cantilever supports (by others)
- B** Die-cast aluminum end plates
- C** UV and impact resistant acrylic snap-on lens with EPDM gasket
- D** Cast aluminum mounting hubs (black)
- E** Gasketed splice access cover plate
- F** Aluminum reveal plates (black)
- G** Specular extruded aluminum reflector
- H** Outlet boxes, liquidtight conduit and fittings (by others)

Features

- Powerful HO, VHO fluorescent for uniform lighting of walls, facades and signs from minimal setbacks
- Snap-on acrylic lens with EPDM gasket – watertight for up and down orientations; suitable for cold weather operation
- Durable aluminum construction – extruded reflector, die-cast end plates, mounting hubs; powder coat finish



Finish:

Exterior surfaces – 6 stage pretreatment and electrostatically applied thermoset polyester powder coating for a durable abrasion, fade and corrosion resistant finish. Choice of semi-gloss colors. Mounting hubs finished black.

Reflector and internal end plates – extruded high purity aluminum with clear anodized specular finish. All hardware and components – non-corrosive stainless steel or aluminum.

Snap-on lens – composite of impact resistant and UV stabilized acrylic. EPDM gasket for watertight operation facing upward or downward.

Standard:

UL listed or CSA certified for wet locations when mounted horizontally. For positions other than horizontal, consult factory.

Mounting:

Cast aluminum mounting hubs with internal 3/4" NPT threaded entry. 3/4" rigid conduit supports or fittings (by others). Allow 5 lbs/foot of reflector (example: 8' unit x 5 = 40 lbs).

One hub supplied with each reflector. Hub attaches to an adjacent reflector to form a continuous row. End-of-row mounting kit (ordered separately) includes one hub and two end caps, one kit required for each individually mounted unit or for each continuous row.

Reflector is adjustable about the hubs. Aiming is locked in position with screws in the hubs.

Electrical:

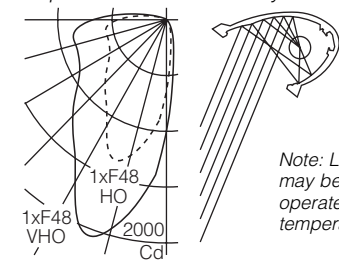
Use 90°C wire for supply connections. Wire leads exit one end of reflector for splicing within mounting hub. Removable cover plate on hub allows access to splices.

Remote magnetic HPF thermally protected class P ballast rated for -20°F/-29°C starting. Weatherproof aluminum enclosure includes three 7/8" dia. entries and one 3/8" liquidtight conduit connector. **Maximum wire length between ballast and fixture using #14 wire is 21' (6.4m).**

For complete ballast specifications, see Accessories Section.

Performance

Two parabolic reflector sections drive light up (or down) the vertical plane from one edge. An elliptical section redirects its light to a parabola and shields the lamp from normal viewing angles. The fast "runback" minimizes glare and spill light. Asymmetry of the beam is maximized resulting in high beam efficiency and superior surface uniformity.



Note: Lamp light output may be diminished when operated in low ambient temperatures.

For complete photometrics, visit www.elliptipar.com.



