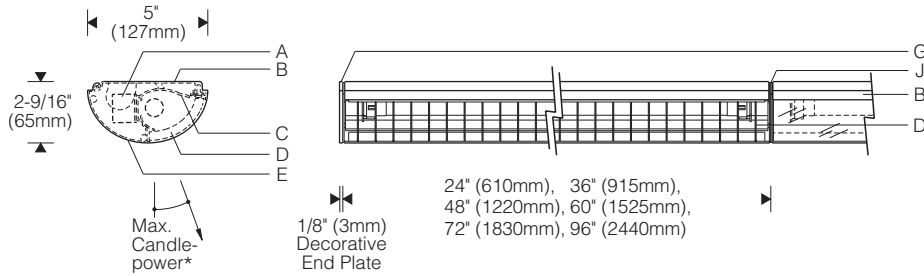
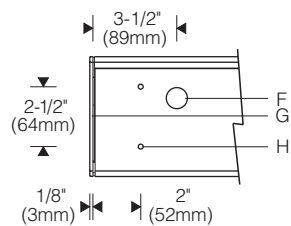


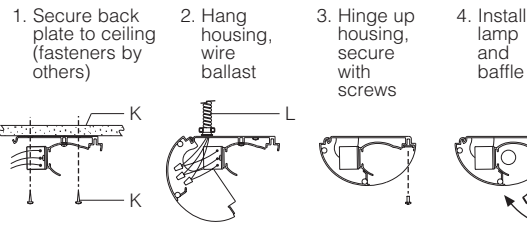
Style 144 1:8 Scale



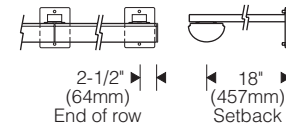
Top View 1:8 Scale (S mount)



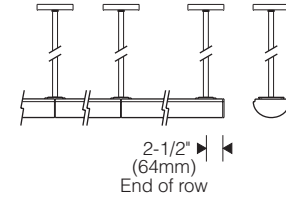
Installation (S mount)



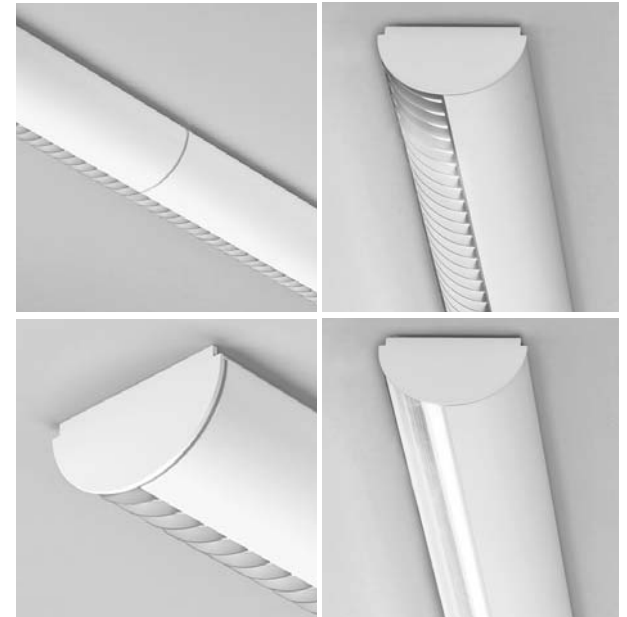
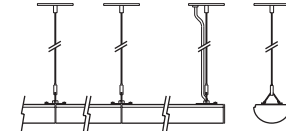
Hangers (X mount) Cantilevers



Pendant Stems



Cables



* Aiming is field adjustable from 25° to 35° above nadir (factory setting is 25°).

Specifications

- | | | | |
|---|--|--|---|
| A Electronic ballast | D High-impact polycarbonate baffle, 25° shielding (matte gray) [Optional clear UV resistant acrylic lens] | F Conduit entry, 7/8" (22mm) dia. (S mount) | J Aluminum joiner/reveal plates (matte gray) |
| B Extruded aluminum back plate | E Extruded aluminum housing | G Aluminum decorative end plates (order separately) | K Structure and fasteners (by others) |
| C Specular extruded aluminum reflector (adjustable aiming) | | H Mounting holes, 9/32" (7mm) dia. | L Conduit and connector (by others) |

Finish:

Matte white housing and decorative end plates. Joiner/reveal plates and baffle finished matte gray. Optional clear acrylic lens replaces baffle.

Painted surfaces – 6 stage pretreatment and electrostatically applied thermoset powder coat for stable, long lasting and corrosion resistant finish.

Reflector – extruded high purity aluminum with clear anodized specular finish. All luminaire hardware – stainless steel.

Mounting:

S mount – back plate mounts flush to ceiling.

X mount – cantilevers, stems or cables **ordered separately**.

Cantilever – 1" x 2" steel arm, suitable support structure required. Adjustable interface plate (concealed under canopy) allows leveling of arms ±5°.

Pendant stem – 11/16" O.D. aluminum, internally threaded.

Cable – 1/16" dia. 7x7 aircraft cable, field adjustable length.

Hangers at ends of row (or single) are located 2-1/2" (64mm) from end. Intermediate hangers are centered on joint.

Electrical:

S mount – 7/8" (22mm) diameter knockouts located at each end of back plate for conduit feed (by others). Use 90°C wire for supply connections and through wire.

X mount – electrical feed hanger mounts over recessed outlet box (by others). Cantilever and stem electrical feeds supplied with #14 AWG leads (must be located at end of row). Cable feed includes 18/4 cord (can be located at end or joint).

Housing hinges down for access to ballast and wiring. Optional #12 AWG prewired modular through wiring with quick connectors.

Integral electronic HPF thermally protected class P ballast with end-of-life protection.

Optional electronic dimming ballast. Compatible dimming control is required (by others). Consult sales representative for specifications.

Optional integral emergency battery operates one lamp. Separate unswitched supply is required.

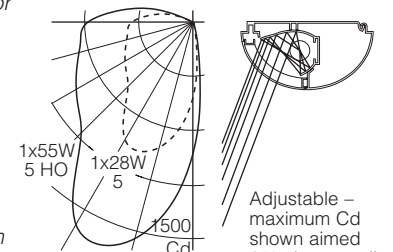
Standard: UL listed or CSA certified.

Features

- T5/T5HO for precise optical control – adjustable aiming
- Matte white elliptical housing blends with ceiling – matte gray baffle nearly matches housing when lighted
- Designed to be inconspicuous – lights entire wall evenly without amplifying surface imperfections (unlike slots)
- Ideal for corridors, art walls, displays, chalkboards, signs

Performance

Two parabolic reflector sections drive light to the bottom of the vertical surface. An elliptical section redirects light that is normally wasted back to a parabola. Glare is minimized and asymmetry of the beam is maximized resulting in high beam efficiency and superior surface uniformity.



For complete photometrics, visit thelightingquotient.com



Cradle to Cradle Certified™ is a certification mark licensed by the Cradle to Cradle Products Innovation Institute.



To order by Row Code

When the Style 144 xtra small enclosed T5 fluorescent is run continuously in a **straight row**, **elliptipar** offers the option of specifying and ordering the entire row as one catalog number. Ordering by row eliminates the need to calculate length, type and quantity of reflectors and end plates.

Steps to specify Row Code:

1. Determine lamp type and select corresponding lamp code (S=T5, V=T5HO).
2. Determine maximum available length for row and round up to nearest foot. Find nominal row length in chart (col. 1).
3. Determine what lengths/wattages of lamps will be used and select the corresponding lamp combination codes (col. 2).
Example: If only 3' and 4' lamps are to be used on the project, specify row codes ending with **A, B** and/or **D** only.
4. If for a given nominal row length a preferred lamp combination is not listed, select the next shorter row that is available in the desired lamp combination.
5. Once the nominal row length and lamp combination has been found in the chart, note the actual overall row length (last column). Also consider if the quantity and lengths of the individual luminaires suit the installation.
6. Enter the four character Row Code in place of the Lamp Code described on page W-20.1. The remainder of the catalog number is formed as shown on page W-20.1.

3 Row Code

Note: Enter row code in place of Lamp Code described on page W-20.1.

 | | | = **Row Code**

Lamp Combination(s)*

- A** = All nominal 3' lamps
- B** = All nominal 4' lamps
- D** = Nominal 3' and 4' lamps
- F** = Nominal 3' and 5' lamps
- G** = Nominal 4' and 5' lamps

Nominal Row Length in feet, between 3' and 50'**

- S** = T5 fluorescent
- V** = T5 HO fluorescent

* Not all lamp combinations are available for each nominal row length (see chart)

** Nominal row lengths over 50' can be formed by combining shorter row lengths (example: a nominal 60' row can be ordered as two nominal 30' rows).

Example

F144 - S36B - S - 22 - 2 - 000

Nominal 36' long row of Style 144 xtra small enclosed T5 fluorescent using only nominal 4' (28W) lamps. Row includes four nominal 8' reflectors for use with two 4' lamps, one nominal 4' reflector for use with one 4' lamp, one pair of decorative end plates and integral 277V electronic ballasts. Overall row length is 36' 0-1/4".

Nominal Row Length (feet)	Lamp Combination	Nominal 3' Luminaire (1 x nominal 3' lamp)	Nominal 4' Luminaire (1 x nominal 4' lamp)	Nominal 5' Luminaire (1 x nominal 5' lamp)	Nominal 6' Luminaire (2 x nominal 3' lamps)	Nominal 8' Luminaire (2 x nominal 4' lamps)	ADE 44 Decorative End Plates (pair)	Overall Row Length
03	A	1					1	3' 0-1/4"
04	B		1				1	4' 0-1/4"
05	G			1			1	5' 0-1/4"
06	A				1		1	6' 0-1/4"
07	D	1	1				1	7' 0-1/4"
08	B					1	1	8' 0-1/4"
09	A	1			1		1	9' 0-1/4"
09	G		1	1			1	9' 0-1/4"
10	D		1		1		1	10' 0-1/4"
11	D	1				1	1	11' 0-1/4"
11	F			1	1		1	11' 0-1/4"
12	A				2		1	12' 0-1/4"
12	B		1			1	1	12' 0-1/4"
13	D	1	1		1		1	13' 0-1/4"
13	G			1		1	1	13' 0-1/4"
14	D				1	1	1	14' 0-1/4"
15	A	1			2			15' 0-1/4"
15	D	1	1			1	1	15' 0-1/4"
16	B					2	1	16' 0-1/4"
17	D	1			1	1	1	17' 0-1/4"
17	F			1	2		1	17' 0-1/4"
17	G		1	1		1	1	17' 0-1/4"
18	A				3		1	18' 0-1/4"
18	D		1		1	1	1	18' 0-1/4"
19	D	1				2	1	19' 0-1/4"
20	B		1			2	1	20' 0-1/4"
21	A	1			3		1	21' 0-1/4"
21	G			1		2	1	21' 0-1/4"
22	D		1		3		1	22' 0-1/4"
23	D	1	1			2	1	23' 0-1/4"
23	F			1	3		1	23' 0-1/4"
24	A				4		1	24' 0-1/4"
24	B					3	1	24' 0-1/4"
25	D	1			1	2	1	25' 0-1/4"
25	G		1	1		2	1	25' 0-1/4"
26	D		1		1	2	1	26' 0-1/4"
27	D	1				3	1	27' 0-1/4"
28	B		1			3	1	28' 0-1/4"
29	D	1	1		1	2	1	29' 0-1/4"
29	G			1		3	1	29' 0-1/4"

Nominal Row Length (feet)	Lamp Combination	Nominal 3' Luminaire (1 x nominal 3' lamp)	Nominal 4' Luminaire (1 x nominal 4' lamp)	Nominal 5' Luminaire (1 x nominal 5' lamp)	Nominal 6' Luminaire (2 x nominal 3' lamps)	Nominal 8' Luminaire (2 x nominal 4' lamps)	ADE 44 Decorative End Plates (pair)	Overall Row Length
30	A				5		1	30' 0-1/4"
30	D				1	3	1	30' 0-1/4"
31	D	1	1			3	1	31' 0-1/4"
32	B					4	1	32' 0-1/4"
33	A	1			5		1	33' 0-1/4"
33	G		1	1		3	1	33' 0-1/4"
34	D		1		1	3	1	34' 0-1/4"
35	D	1				4	1	35' 0-1/4"
36	A				6		1	36' 0-1/4"
36	B		1			4	1	36' 0-1/4"
37	D	1	1		1	3	1	37' 0-1/4"
37	G			1		4	1	37' 0-1/4"
38	D				1	4	1	38' 0-1/4"
39	D	1	1			4	1	39' 0-1/4"
40	B					5	1	40' 0-1/4"
41	D	1			1	4	1	41' 0-1/4"
41	G		1	1		4	1	41' 0-1/4"
42	A				7		1	42' 0-1/4"
42	D		1		1	4	1	42' 0-1/4"
43	D	1				5	1	43' 0-1/4"
44	B		1			5	1	44' 0-1/4"
45	A	1			7		1	45' 0-1/4"
45	D	1	1		1	4	1	45' 0-1/4"
45	G			1		5	1	45' 0-1/4"
46	D				1	5	1	46' 0-1/4"
47	D	1	1			5	1	47' 0-1/4"
48	A				8		1	48' 0-1/4"
48	B					6	1	48' 0-1/4"
49	D	1			1	5	1	49' 0-1/4"
49	G		1	1		5	1	49' 0-1/4"
50	D				3	4	1	50' 0-1/4"



Features

- Time saving – simplifies specification and ordering
- One catalog number – includes all necessary reflectors to install row
- Assured fit – all you need is the maximum available length of the ceiling



elliptipar[®] 
there is no equal[™]

elliptipar from **The Lighting Quotient**
114 Boston Post Road, West Haven, Connecticut 06516, USA
Voice 203.931.4455 • Fax 203.931.4464 • thelightingquotient.com

Certain products illustrated may be covered by applicable patents and patents pending. These specifications supersede all prior publications and are subject to change without notice. Copyright © 2011 Sylvan R. Shemitz Designs, Inc., all rights reserved.