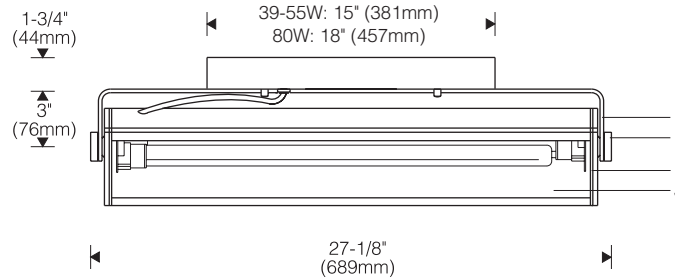
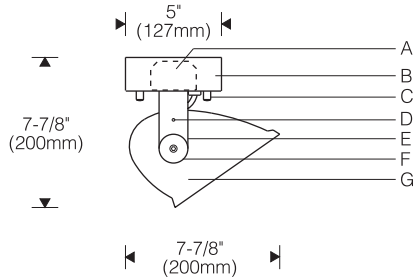
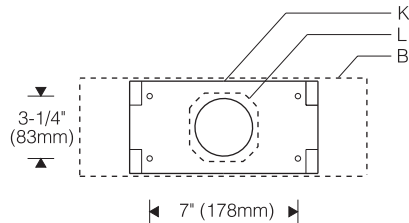


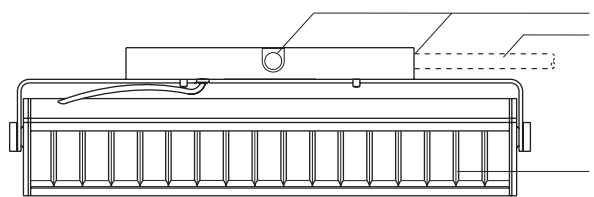
E Mount 1:10 Scale



Mounting Plate



F Mount



Specifications

- | | | | |
|---|---------------------------------------|---|--|
| A Integral electronic ballast (remote for X mount) | D Locking set screw | H Aluminum reveal plates (black) | M 7/8" dia. conduit entries, 3 total (F mount only) |
| B Aluminum canopy/ ballast housing | E Aluminum yoke | J Specular extruded aluminum reflector | N Conduit (by others) |
| C Chrome cap nuts | F Machined aluminum knobs | K Aluminum mounting plate | O Accessory snap-in parabolic cross baffle, 35° shielding |
| | G Die-cast aluminum end plates | L Outlet box (by others) | |

Finish:

Style 113 fluted – bright clear anodized aluminum housing. Painted end plates, yoke and canopy in choice of silver or semi-gloss black.

Style 114 smooth – semi-gloss white housing, end plates, yoke and canopy.

Painted surfaces – 6 stage pretreatment and electrostatically applied thermoset powder coat for stable, long lasting and corrosion resistant finish.

Reflector and internal end plates – extruded high purity aluminum with clear anodized specular finish. All luminaire hardware – stainless steel. All mounting hardware – zinc or cadmium plated.

Mounting:

E mount – canopy mounts over recessed outlet box.

F mount – three 7/8" dia. entries in mounting plate with clearance openings in canopy; one front center, one on each end (surface conduit, connectors by others).

Pendant or cantilever assembly ordered separately; specify **X** mount. Supplied with **remote** ballast.

Electrical:

Use 90°C wire for supply connections.

Integral electronic HPF thermally protected class P ballast with end-of-life protection.

X mount (for use with pendant or cantilever) furnished with **remote** electronic ballast. Aluminum ballast enclosure includes four 7/8" dia. entries and a knockout for accessory fuse.

Maximum wire length between remote electronic ballast and fixture is 10' (3m) less length of pendant stem or cantilever arm.

Optional electronic dimming ballast (**E** and **F** mount only); compatible dimmer switch required (by others). Consult sales representative for compatibility and specifications.

Dimming not available with X mount pendant or cantilever.

For complete ballast specifications, see Accessories Section.

Standard:

UL listed or CSA certified for damp locations (*Style 114* hex tube model with gasketed lens recommended for damp locations).

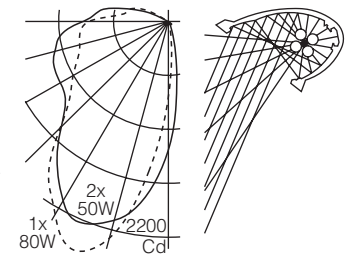
Features

- **4X** focuses the light of two 40, 50 or 55W lamps for high impact wall lighting for retail or large commercial interiors
- Die-cast end plates join at articulated black reveals; machined aluminum knobs – no exposed fasteners
- Integral electronic ballast – dimming, emergency optional
- Accessory snap-in specular parabolic cross baffle



Performance

Two parabolic reflector sections drive light to the bottom of the wall. An elliptical section shields the lamp from normal viewing angles and redirects its light to a parabola. Glare is minimized and asymmetry of the beam is maximized resulting in high beam efficiency and superior surface uniformity.



For complete photometrics, visit thelightingquotient.com

To form a Catalog Number

F | | | - | | | - | | | - | | | - | | |
1 2 3 4 5 6 7 8

1 Source

F = Long twin tube compact fluorescent

2 Style

113 = Large fluted surface, **integral** ballast
 114 = Large smooth surface, **integral** ballast

Note: pendant or cantilever mounted units furnished with **remote** ballast.


3 Lamp

| | | = Long Twin Tube CF Lamp Code

Lamp Wattage (see chart)

Lamp Configuration

L1 = Single-lamp cross section
 X2 = 4X® (dual-lamp) cross section (not available for 80W)

Lamp W	Single-lamp section		4X® dual-lamp section	
	Code	Lamp	Code	Lamps
Long Twin Tube Compact Fluorescent 				
39	L139	1xFT36-39W/2G11	X239	2xFT36-39W/2G11
40	L140	1 x FT40W/2G11	X240	2 x FT40W/2G11
50	L150	1 x FT50W/2G11	X250	2 x FT50W/2G11
55	L155	1 x FT55W/2G11	X255	2 x FT55W/2G11
80	L180	1 x FT80W/2G11		

For complete lamp and ballast information, see Accessories Section. Standard long twin tube lamp color is 3000K/80+ CRI.

4 Mounting

E = External yoke on ceiling canopy. Mounting plate fastens over recessed outlet box (by others).
 F = External yoke on ceiling canopy. Mounting plate with (3) 7/8" dia. entries, one on front, one on each end for surface conduit (by others).
 X = External yoke for use with accessory pendant or cantilever mounting assembly (order separately)
Note: furnished with **remote** ballast.

Project: _____

5 Finish

Style 113 Fluted

01 = Bright aluminum housing with silver end plates, yoke and canopy
 81 = Bright aluminum housing with semi-gloss black end plates, yoke and canopy

Style 114 Smooth

02 = Semi-gloss white housing, end plates, yoke and canopy
 99 = Custom RAL or computer matched color to be specified, consult sales representative

6 Voltage/Ballast

Electronic *

1 = 120V
 2 = 277V
 3 = 347V (Canada)

Dimming +

T = 120V
 V = 277V

* X mount furnished with **remote** electronic ballast.
 + Dimming not available for use with pendant or cantilever (X mount) – consult factory for alternatives. Availability for wattages and voltages varies with ballast manufacturer and control type – see thelightingquotient.com for dimming specifications and limitations.

7 Option (see Accessories Section for specifications)

00 = No options
 0E = Remote emergency battery pack (all lamps except L180), maximum distance from battery pack to fixture is 5' (1.5m). For use with non-dimming ballasts only. For emergency battery pack for L180 lamp, consult factory.
 XX = For modification not listed, include detailed description. Consult factory prior to specification.

8 Destination Requirement

0 = UL listed or CSA certified for U.S.
 J = UL listed or CSA certified for Canada

Example

F113 - L150 - F - 01 - 1 - 000

Large fluted model for use with one 50W long twin tube compact fluorescent lamp. External yoke on canopy with mounting plate for surface conduit (by others). Bright aluminum housing/reflector, silver end plates and canopy. Integral 120V electronic ballast. UL listed or CSA certified for U.S.

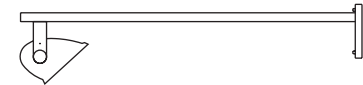
Type: _____

Accessories

Order separately. See Accessories Section for specifications.

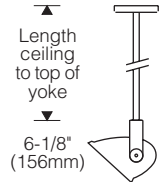
VCX | | 36 | = Cantilever, 36" (915mm) setback, (X mount remote units only)

0 = U.S.
 J = Canada
 02 = semi-gloss white
 07 = silver
 08 = semi-gloss black



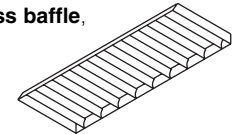
VPX | | | = Double stem wallwash pendant, (X mount remote units only)

0 = U.S.
 J = Canada
 Length in inches (60" (1.5m) maximum)
 02 = semi-gloss white
 07 = silver
 08 = semi-gloss black



Note: For sloped ceiling pendant, consult factory.

ABL000E0 = Snap-in parabolic cross baffle, specular aluminum, 35° shielding



AFK000X | | = Ballast fuse kit
 0 = U.S.
 J = Canada

