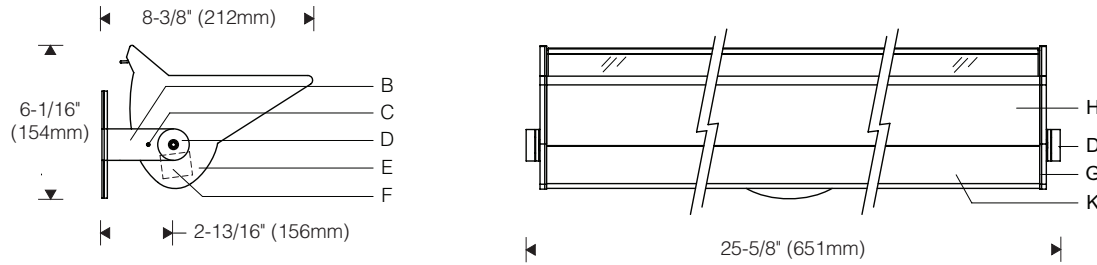
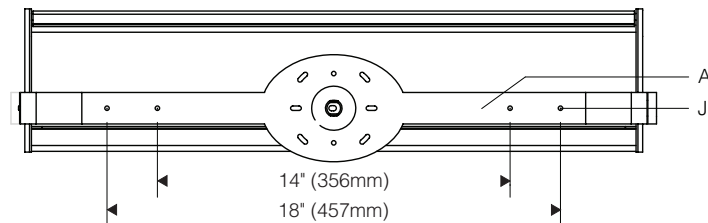


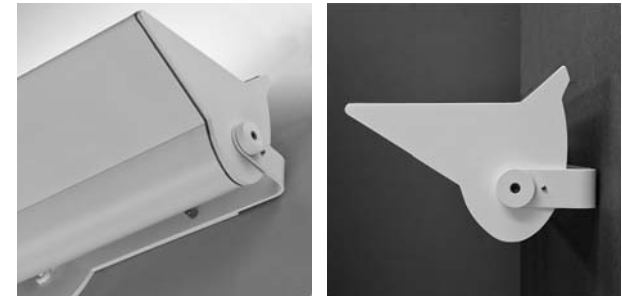
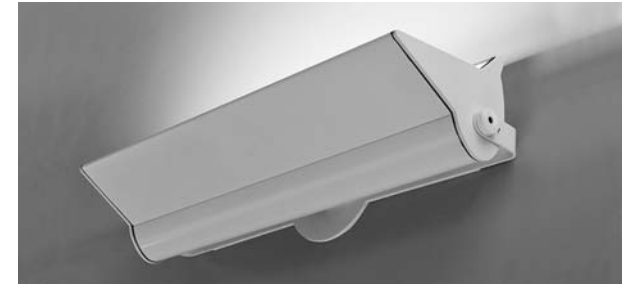
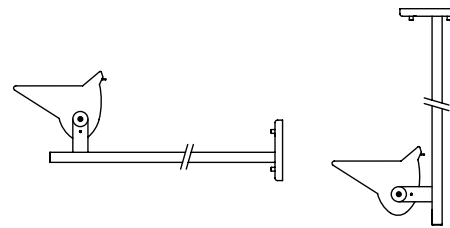
**E Mount:** 1:8 Scale



**Mounting Plate (E mount)**



**Cantilever (X mount)**



**Specifications**

- |  |                                      |   |   |
|--|--------------------------------------|---|---|
| <b>A</b> Stamped aluminum mounting plate | <b>D</b> Decorative knobs (aluminum) | <b>G</b> Aluminum reveal plates (black)         | <b>K</b> Extruded specular aluminum reflector |
| <b>B</b> Aluminum yoke                   | <b>E</b> Stamped aluminum end plates | <b>H</b> Cutoff visor (included)                |   |
| <b>C</b> Locking set screw               | <b>F</b> Integral electronic ballast | <b>J</b> Mounting holes for hardware (included) |   |

**Features**

- Stamped end plates join at articulated black reveals; machined aluminum knobs
- Integral electronic ballast – dimming optional
- Extruded visor provides shielding
- Accessory snap-on lens



**Finish:**

Semi-gloss white housing, end plates, yoke and mounting plate.

Painted surfaces – 6 stage pretreatment and electrostatically applied thermoset powder coat for stable, long lasting and corrosion resistant finish.

Reflector – extruded high purity aluminum with clear anodized specular finish. All luminaire hardware – stainless steel.

**Mounting:**

**E mount** – mounting plate fastens flush to wall over recessed outlet box (by others).

**X mount** – external yoke mounts to cantilever (**ordered separately**). Cantilever – 1" x 2" steel arm, interface plate (under canopy) allows ±5° leveling, **suitable backing structure required**.

**Electrical:**

Use 90°C wire for supply connections.

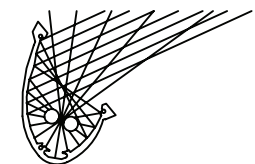
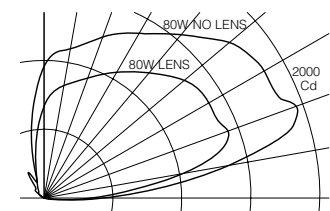
Integral electronic HPF thermally protected class P ballast with end-of-life protection. Optional electronic dimming ballast, compatible dimmer switch required (by others). Consult sales representative for compatibility and specifications. For complete ballast specifications, see Accessories Section.

**Standard:**

UL listed or CSA certified for damp locations.

**Performance**

Two parabolic reflector sections drive light across the ceiling from one edge. An elliptical section shields the lamp from normal viewing angles and redirects its light to a parabola. Glare is minimized and asymmetry of the beam is maximized resulting in high beam efficiency and superior surface uniformity.



For complete photometrics, visit [thelightingquotient.com](http://thelightingquotient.com)

