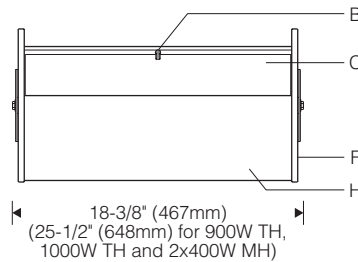
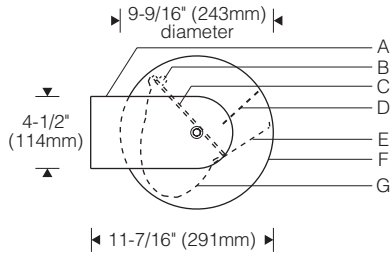
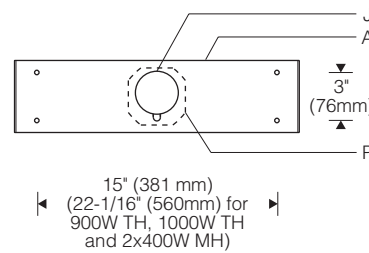




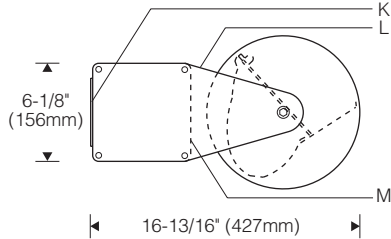
Style 127 - Remote 1:12 Scale



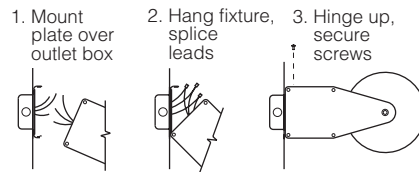
Yoke Mounting (Style 127)



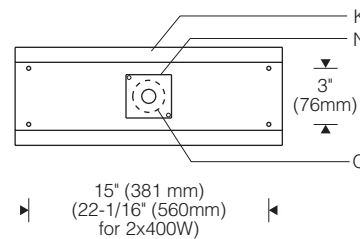
Style 128 - Integral 1:12 Scale



Installation (Style 128)



Mounting Plate (Style 128)



Specifications

- | | | | |
|---|--|--|--|
| A Aluminum yoke | E Aluminum splay (white) | J Splice access cap | N Cover plate with 7/8" dia. conduit entry |
| B Lens retainer clip | F Spun aluminum end plates | K Extruded aluminum mounting plate | O 2" dia. opening to access recessed outlet box (by others) |
| C Lay-in micro-prismatic tempered glass lens | G Specular extruded aluminum reflector | L Aluminum side arms | P Outlet box (by others) |
| D Optional horizontal radial blade baffle | H Perforated or solid rolled aluminum housing | M Extruded aluminum ballast enclosure | |

Finish:

Perforated or solid rolled aluminum housing. Semi-gloss white housing, end plates, yoke or side arms and ballast enclosure. Internal end plates finished black.

Painted surfaces – 6 stage pretreatment and electrostatically applied thermoset powder coat for stable, long lasting and corrosion resistant finish.

Reflector and internal end plates – extruded high purity aluminum with clear anodized specular finish. All luminaire hardware – stainless steel.

Mounting:

Style 127 – yoke fastens to suitable structure over recessed outlet box. Yoke has 2" diameter hole with removable cap to access splices.

Style 128 – mounting plate covers recessed outlet box or conduit feed and forms reveal at wall. Suitable backing structure required (by others) – weight is up to approximately 60 lb/27 kg (2x400W MH). Fixture hinges on plate for hands-free access to splices.

Electrical:

Use 90°C wire for supply connections.

Tungsten halogen (Style 127) – recessed single contact (RSC) lampholders in patented clamping supports for maximum heat dissipation.

Metal halide – remote (Style 127) or integral (Style 128) constant wattage autotransformer (CWA) or electronic ballast. Mogul lampholder is pulse rated for use with either horizontal or universal position reduced envelope pulse start lamps. End-of-lamp aligner ensures consistent optical performance.

For complete ballast specifications, see Accessories Section.

Standard:

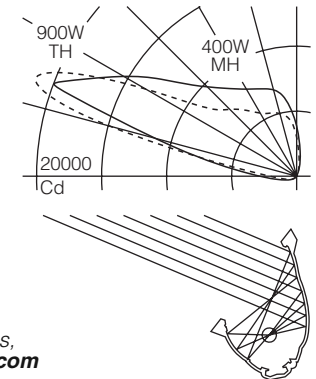
UL listed or CSA certified for damp locations (Style 107/108 extruded cylinder with gasketed lens recommended for damp locations). Suitable for upright orientation only.

Features

- **KO Series** for cost conscious projects – perforated or solid housing in durable semi-gloss white powdercoat
- Non-corrosive construction – aluminum and stainless steel
- Compact yet powerful – up to 1000W halogen; 2x400W MH
- Round end plates – consistent profile regardless of aiming
- Regressed lens – provides substantial cutoff of brightness

Performance

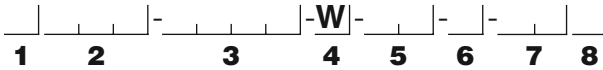
Two parabolic reflector sections drive light across the ceiling from one edge. An elliptical section shields the lamp from normal viewing angles and redirects its light to a parabola. Glare is minimized and asymmetry of the beam is maximized resulting in high beam efficiency and superior surface uniformity.



For complete photometrics, visit thelightingquotient.com



To form a Catalog Number



1 Source

M = Metal halide
T = Tungsten halogen

2 Style

127 = Large KO Series cylinder, remote ballast
128 = Large KO Series cylinder, integral ballast

3 Lamp

Lamp Code	Wattage	Lamp Number	Voltages	Remote Distance
-----------	---------	-------------	----------	-----------------

Ceramic Arc Tube Pulse Start Metal Halide (90+ CRI)

210C	210	CDM210/T9/930/U/E	2, U	30' (9m)
315C	315	CDM315/T9/930/U/E	2, U	30' (9m)

Ceramic Arc Tube Pulse Start Metal Halide (80+ CRI)*

150G	150	CDM150/T6/830	1, 2	15' (4.5m)
			T, U	5' (1.5m)
250C	250	CMH250/U/830/R	A, B	50' (15m)
400C	400	CMH400/U/830/R	A, B	50' (15m)
240C	2x400	(2) CMH400/U/830/R	A, B	50' (15m)

Quartz Arc Tube Pulse Start Metal Halide (68 CRI)*

250P	250	MS 250W/H75/T15/PS/740	A, B	50' (15m)
			2, U	16' (4.8m)
320P	320	MS 320W/H75/T15/S/PS/740	A, B	50' (15m)
			2, U	16' (4.8m)
350P	350	MS 350W/H75/T15/PS/740	A, B	50' (15m)
			2, U	16' (4.8m)

Tungsten Halogen

0300	300	Q300T3	A	
0350	350	Q350T3/CL/HIR	A	
0500	500	Q500T3	A	
0900	900	Q900T3/CL/HIR	B, G	
1000	1000	Q1000T3	F, G	

For complete lamp and ballast information, see Accessories Section.

* Use only clear metal halide horizontal or universal position lamp with compact envelope. Standard lamp colors are 3000K for Ceramic Arc Tube Pulse Start lamps and 4000K for Quartz Arc Tube Pulse Metal Halide lamps.

Project: _____

4 Mounting

W = External yoke/mounting plate for attachment to structure over recessed outlet box (Style 127), or extruded mounting plate for attachment to structure over recessed outlet box or conduit feed (Style 128)

5 Finish

P2 = Perforated (non-illuminated) housing; semi-gloss white housing, end plates, yoke or side arms and ballast enclosure
02 = Solid housing; semi-gloss white housing, end plates, yoke or side arms and ballast enclosure
99 = Custom RAL or computer matched color to be specified, consult sales representative

6 Voltage

Electronic (Metal Halide only) Magnetic and Tungsten Halogen
1 = 120V A = 120V
2 = 277V B = 277V
T = 120V dim* F = 220V (1000W TH only)
U = 208-277V dim* G = 240V (900/1000W TH only)

*100-50% dimming, 0-10V compatible controls by others. Consult factory for dimming the 210W lamp.

7 Option (see Accessories Section for specifications)

00 = No options
B0 = Horizontal radial blade baffle. Provides horizontal cutoff of lens brightness when maximum candlepower is aimed at 35° above horizontal. Diffuse aluminum on top, matte black on bottom.
0R = Halogen standby lamp with relay. Relay is field connected at remote ballast for Style 127, integral for Style 128. 100W maximum (lamp included). Not available for 2x400W metal halide.
BR = Combination of radial blade baffle and halogen standby lamp (see above)
XX = For modification not listed, include detailed description. Consult factory prior to specification.

8 Destination Requirement

0 = UL listed or CSA certified for U.S.
J = UL listed or CSA certified for Canada

Type: _____

Example

M128 - 400C - W - P2 - B - B00

Large KO Series cylinder for use with 400 watt ceramic arc tube pulse start metal halide lamp. Extruded mounting plate for attachment over conduit feed or recessed outlet box. Perforated aluminum cylinder with housing, end plates, side arms and ballast enclosure finished semi-gloss white. Integral 277V ballast. Fixture supplied with horizontal blade baffle. UL listed or CSA certified for U.S.

Accessories

Order separately. See Accessories Section for specifications.

AFK000X _____ = Ballast fuse kit

0 = U.S.
J = Canada

