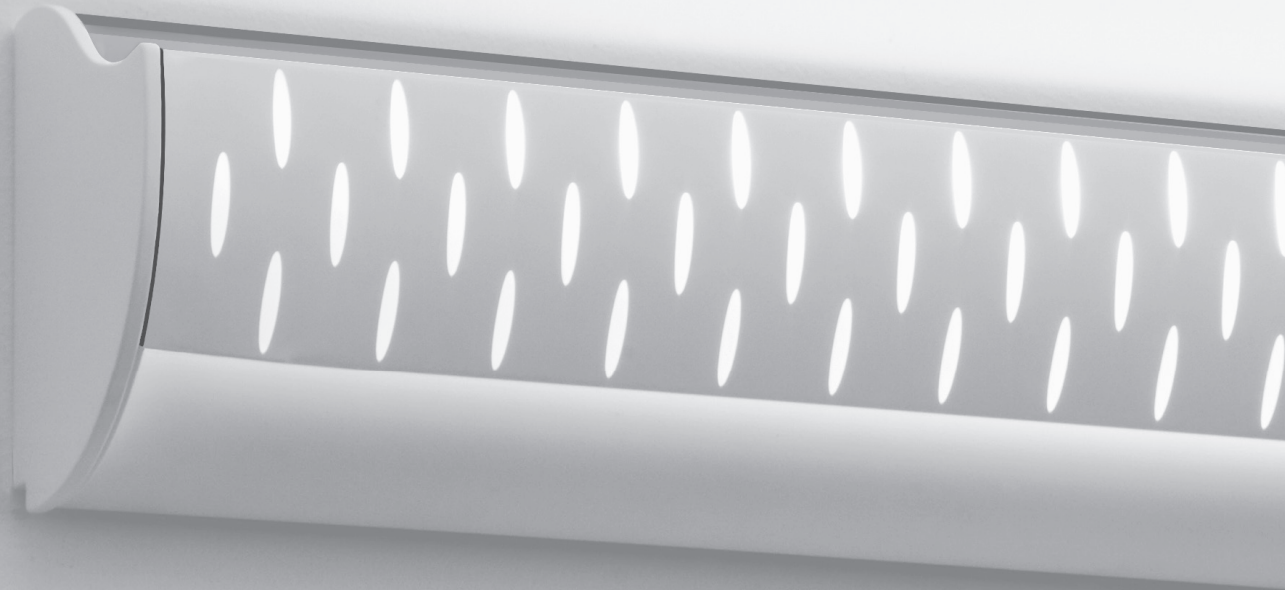
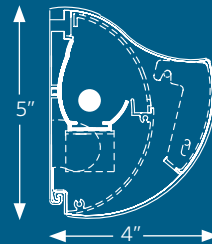
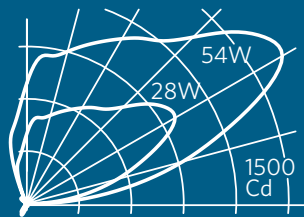
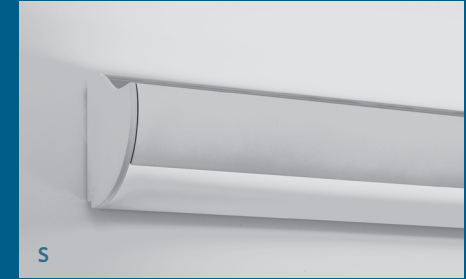
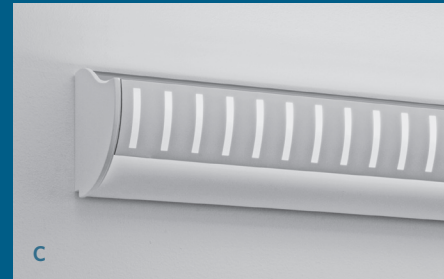
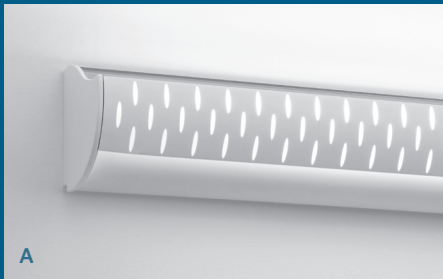


elliptipar 
There is no equal™



Style F147
New forms, classic performance

Style F147



Low profile uplight. Four pattern choices for decorative front shield. Frosted diffuser provides a uniform glow while redirecting light onto the wall below.

- ADA compliant — ideal for hospital and school corridors
- Precise optical control of the T5 or T5HO lamp in the elliptipar reflector projects maximum peak candlepower across a horizontal plane with exceptional uniformity

- Utilizes T5 (14, 21, 28W) and T5HO (24, 39, 55W) lamps in nominal 2', 3' and 4' lengths
- Clear UV resistant acrylic lens covers the top of luminaire for safety and easy maintenance
- Mount individually or through-wire in a continuous row

- Integral electronic ballast; dimming optional
- Mounting plate fastens flush to wall; housing hinges on plate for hands-free access to wiring
- Available in a choice of several standard, RAL or computer matched finishes

- Custom perforated patterns also available
- Reflector is extruded high-purity aluminum with clear anodized specular finish
- Optional integral emergency battery pack operates one lamp
- All luminaire hardware is stainless steel

elliptipar 
There is no equal™

tambient 
Green in any color™

fraqtir 

The Lighting Quotient
114 Boston Post Road, West Haven, CT 06516
Tel 203.931.4455 Fax 203.931.4464
www.TheLightingQuotient.com



THE LIGHTING **QUOTIENT**