

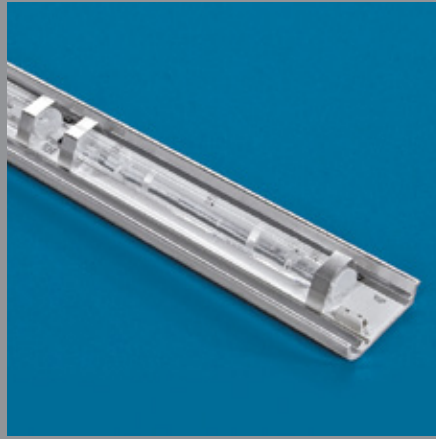
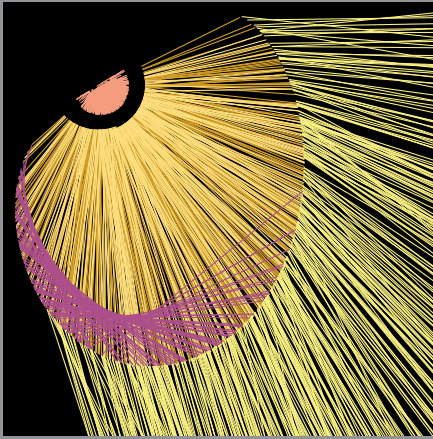


fraqtir™ point

Style S099 LED

# fracqtir™ point

## Style S099 LED



- Innovative refractor uses principles of refraction and total internal reflection.
- Produces an asymmetric distribution ideal for illuminating surfaces uniformly from one edge.
- High light output from a small package —460 lumens at 350mA or 815 lumens at 700mA (estimated).
- Adjustable and lockable aiming.

- LED light engine assemblies are removable for service or upgrade.
- Extruded aluminum heat sink allows optimal thermal management for peak LED performance.
- Precise optical control ensures that the light is delivered to the target minimizing glare and spill.
- Virtually no ultraviolet or infrared light emitted.

- Dimensions: 7.5" long; 2" diameter with 5" diameter canopy.
- Powered by the most advanced LUXEON emitters from Philips Lumileds, the LEDs produce a consistent warm white light with great color rendering .
- Remote, high power factor, high efficiency, constant current driver with quick-connect port for easy installation.

- Optional dimming down to 0.1% available. Consult factory for more information about available dimming drivers.
- Snap in cover lens protects circuit board and allows for easy cleaning.
- Variety of mounting options - surface, pendant, cantilever or track.
- U. S. and foreign patents pending.

elliptipar™   
there is no equal™

tambient™   
green in any color®

fracqtir™   
shaping LED science™

**The Lighting Quotient**  
114 Boston Post Road, West Haven, CT 06516  
Tel 203.931.4455 Fax 203.931.4464  
[www.TheLightingQuotient.com](http://www.TheLightingQuotient.com)



THE LIGHTING QUOTIENT™