

**Packaged Items:**

- (2) TPR end mount rails.
- (2) TPR rail interface brackets.
- (4) Adhesive cord management clips.

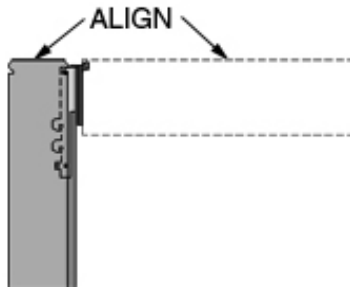
**Required Additional Items:**

Tambient L or P series luminaire.

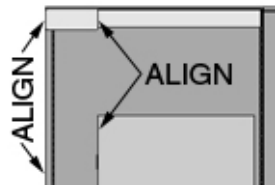
**Required Tools:**

#2 Phillips screwdriver.

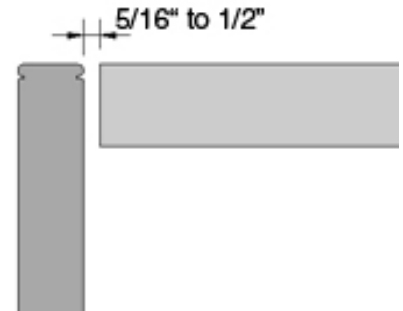
**Application Notes:**



Install rail so top of luminaire aligns with top of panel.



For best results, position style L205 and style P205 file lights so the front of the luminaire aligns with the edge of the panel and rear aligns with front edge of file cabinet.



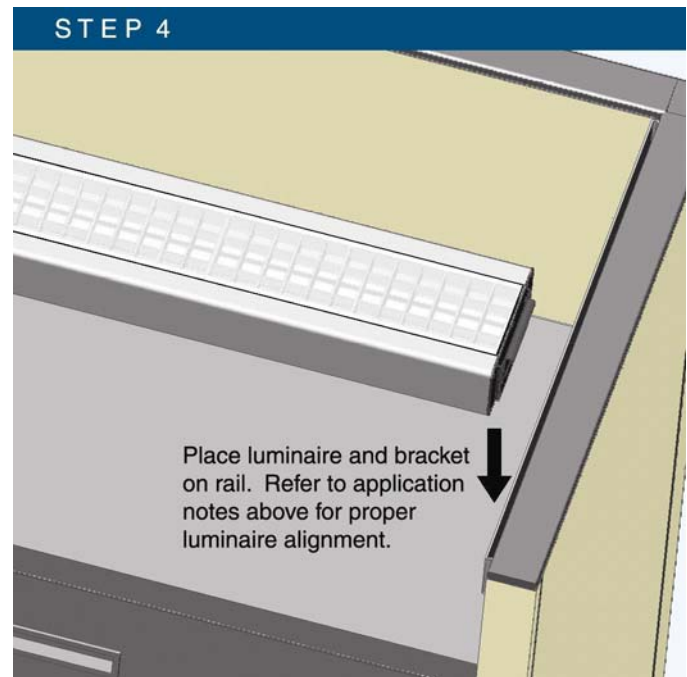
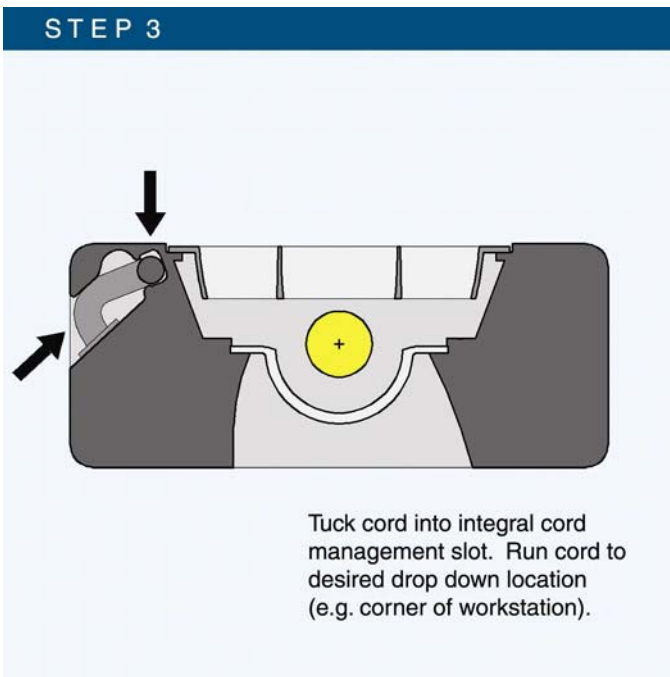
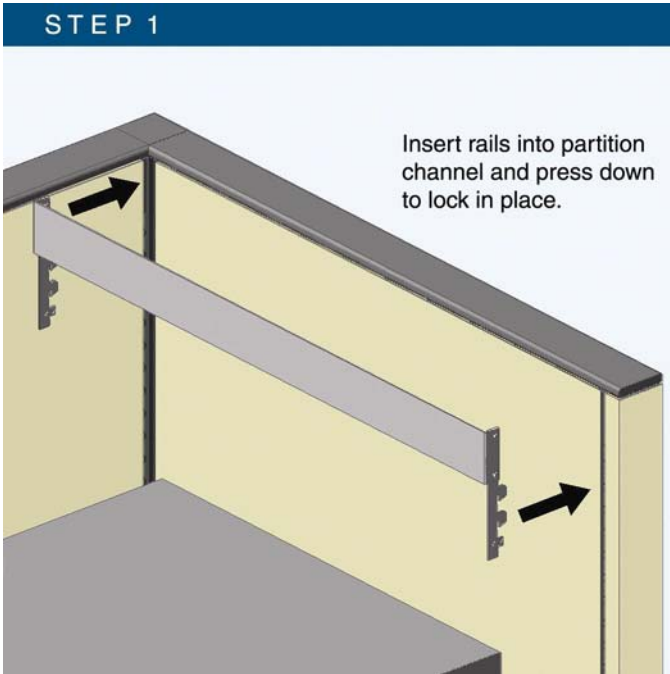
The luminaire should be sized to provide 5/16" to 1/2" gap at both ends of the luminaire.

**Note:** Typically, custom length fixtures are necessary when using end mount rails.

**CONFIDENTIAL PROPRIETARY INFORMATION**

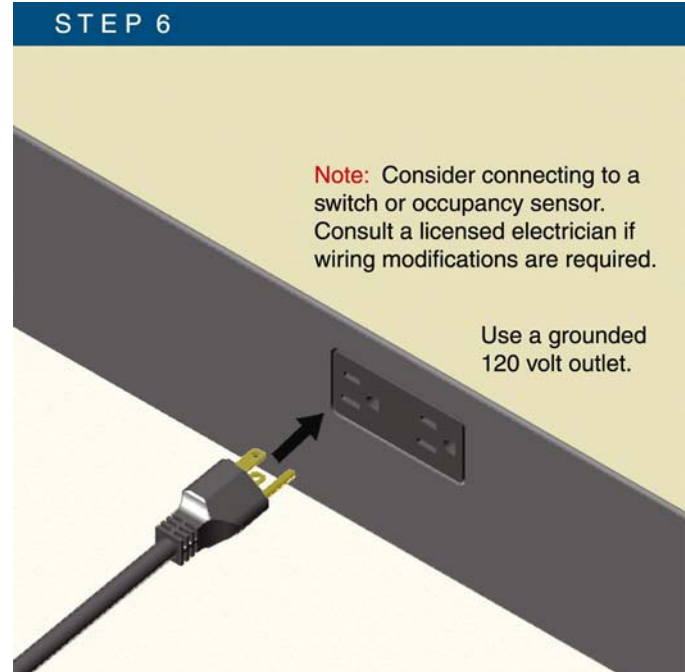
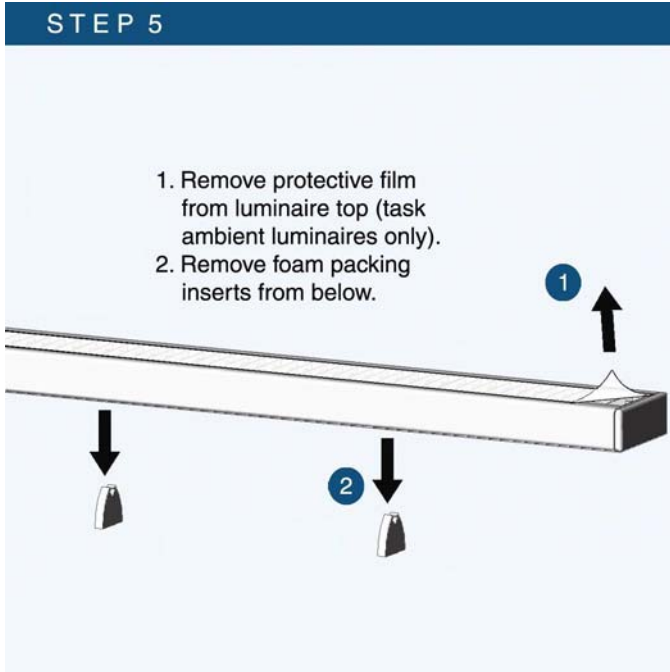
The information herein is of a proprietary nature and is submitted in confidence for the use by our clients, customers, or vendors only. Unauthorized reproduction, publication, distribution, or dissemination, in whole or in part, is expressly prohibited. The information contained herein is and remains the property of Tambient and receipt or possession of this information confers no right in or license to or disclose to others the subject matter contained herein for any but authorized purposes. All rights reserved. Copyright © 2010 Sylvan R. Shemitz Designs, Inc.

**Installation Instructions:**



**CONFIDENTIAL PROPRIETARY INFORMATION**

The information herein is of a proprietary nature and is submitted in confidence for the use by our clients, customers, or vendors only. Unauthorized reproduction, publication, distribution, or dissemination, in whole or in part, is expressly prohibited. The information contained herein is and remains the property of Tambient and receipt or possession of this information confers no right in or license to or disclose to others the subject matter contained herein for any but authorized purposes. All rights reserved. Copyright © 2010 Sylvan R. Shemitz Designs, Inc.



**CONFIDENTIAL PROPRIETARY INFORMATION**

The information herein is of a proprietary nature and is submitted in confidence for the use by our clients, customers, or vendors only. Unauthorized reproduction, publication, distribution, or dissemination, in whole or in part, is expressly prohibited. The information contained herein is and remains the property of Tambient and receipt or possession of this information confers no right in or license to or disclose to others the subject matter contained herein for any but authorized purposes. All rights reserved. Copyright © 2010 Sylvan R. Shemitz Designs, Inc.