

# Product Line Basics

## Reflectors

### Size

Xtra Small  
(thin shell shown)

Small (.3)

Medium (.4)

Large  
(.5 or .6)

Xtra Large  
(.9)

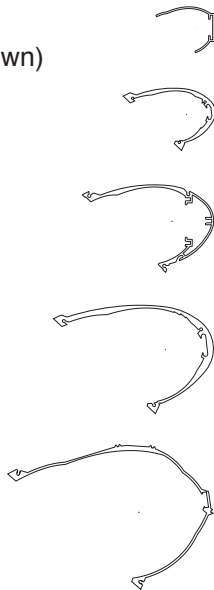
### Cross-section

Fluted  
(bright only)

Smooth  
(painted only)

Contoured  
(bright or painted)

Thin shell  
(concealed)



## Sources

### T - Tungsten Halogen

DC bayonet



RSC double ended

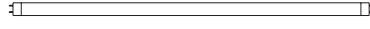


### F - Linear Fluorescent

T5

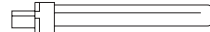


T8



### F - Compact Fluorescent

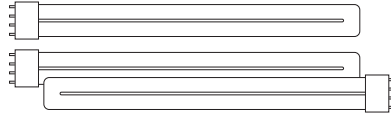
Quad tube



Hex tube



Long twin tube



**4X**® double long twin tube

### M - Metal Halide

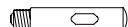
Ceramic arc tube pulse start



(T6, G12 base)



(T9, PGZ18 base)

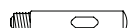


(T15, mogul base)



(ED18, mogul base)

Quartz arc tube pulse start



(T15, mogul base)



(ED28, mogul base)

Quartz arc tube probe start

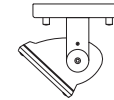


(BT37, mogul base)

## Styles

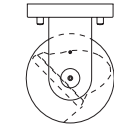
### 100 series - Surface

Exposed reflector



102

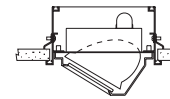
Enclosed reflector (cylinders, TAC)



120

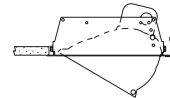
### 200 series - Semi-Recessed

With hood (fixed aiming)



201

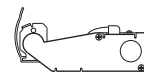
Lay-in grid ceiling



209

### 300 series - Concealed

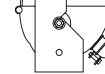
305



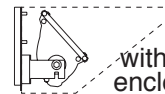
301



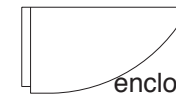
302



### 400 series - Ensconce®



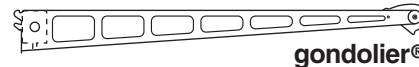
403 with ESA enclosure



ESB enclosure

### 500 series - Retail Lighting

501



gondolier®

### 3000 series - Library Lighting

3030

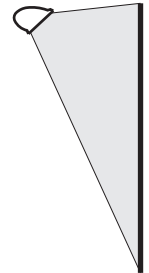


## Applications

### Lighting the Vertical Plane

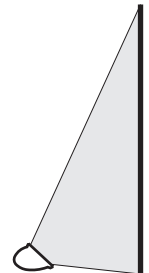
From above

- wall
- perimeter
- art / display
- merchandise
- chalk / write board
- signage



From below

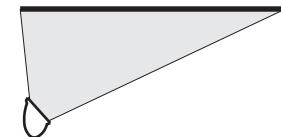
- wall
- facade
- floodlighting
- signage



### Lighting the Horizontal Plane

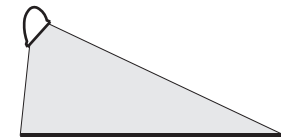
From below

- ceiling
- vault
- cove
- coffer
- canopy
- soffit



From above

- floor
- desk (task lighting)
- ground
- landscaping
- pole / post mounted



Product trade names:

**4X**® KO Series® Ovalinear®  
**Ensconce**® ... the dotted line®