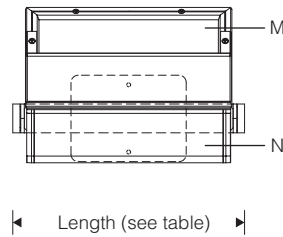
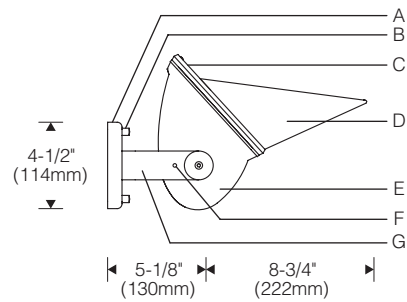
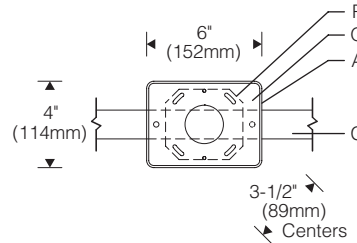


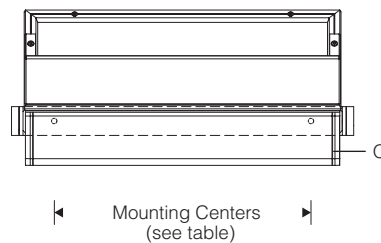
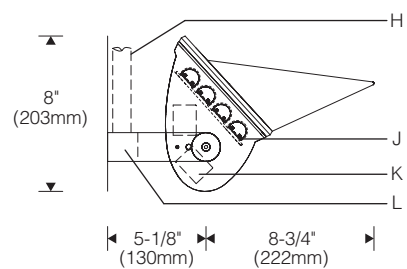
Z Mount 1:10 Scale



Mounting Plate (Z mount)

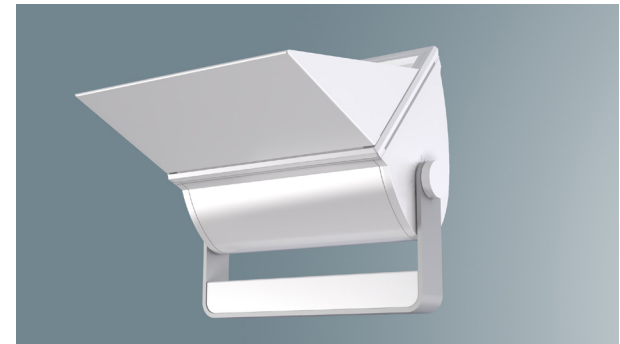
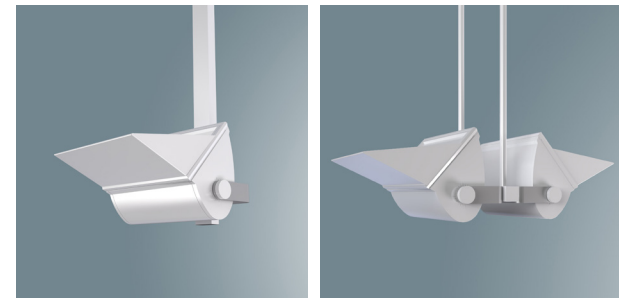


Y Mount 1:10 Scale



Length	Mounting*
12-1/16" (306mm)	8-7/8" (225mm)
17-13/16" (452mm)	14-5/8" (370mm)
24-7/8" (632mm)	21-11/16" (550mm)

*Mounting dimensions shown for Y mount only.



Specifications

- A** Aluminum canopy (Z mount)
- B** Chrome cap nuts
- C** Mitred extruded aluminum door frame w/ silicone gasket
- D** Solid cutoff visor (included)
- E** Die-cast end plates with aiming marks
- F** Locking set screw
- G** Aluminum yoke
- H** Conduit (by others)
- J** Field serviceable light engine with asymmetric optic
- K** Integral drivers
- L** Integral splice compartment with conduit entry and removable cover (Y mount)
- M** Micro-prismatic tempered glass lens
- N** Extruded aluminum housing
- O** Aluminum reveal plate (black)
- P** Outlet box (by others)
- Q** Aluminum mounting plate

Optic Assembly:

Two-piece extruded aluminum heat sink housing and light engine. Exterior heat sink anodized for maximum emissivity. Precision extruded polymer refractive lens with optimized asymmetric distribution. Light engine may be removed for service or upgrade. Clear Tempered microprismatic glass lens. Stainless steel hardware.

Finish:

Painted surfaces – 6 stage pretreatment and electrostatically applied thermoset polyester powder coating for a durable abrasion, fade and corrosion resistant finish. Formed aluminum visor.

Extruded aluminum heat sink/housing, canopy, yoke, door frame and decorative end plates are finished in semigloss white. All luminaire hardware is stainless steel; mounting hardware is zinc or electroplated steel.

Mounting:

Z mount – wall plate mounts to recessed outlet box (by others). Canopy conceals mounting plate and hardware.

Y mount – surface mounted yoke attaches with 1/4-20 fasteners (by others) concealed under splice cover.

Uplight pendant (back-to-back) or cantilever mounting assembly utilizes required mounting hangers (see pg. SC12.1) ordered and priced separately; specify **X** mount.

One, two, three or four-way cluster pendant assembly utilizes required mounting hangers (see pg. SC12.1) ordered and priced separately; specify **1**, **2**, **3** or **4** mount.

Fixture weights: 12" fixture 12.0 lb (5.4 kg); 17" fixture 16.0 lb (7.3 kg); 24" fixture 22.0 lb (10.0 kg).

Electrical:

Use 90°C wire for supply connections. Integral electronic HPF constant current driver. For complete driver specifications, see website, reference document [MA-1303](#).

Standard:

CSA certified to UL1598, UL8750, CSA C22.2 for dry locations; specify **VP** option for damp locations. Where pendant or cantilever may be exposed to wind, consult factory. 5 year warranty, maximum ambient temperature 45°C (113°F).

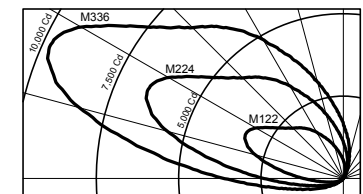
Features

- Maintains over 80% of initial light output beyond 60,000 hours
- 2700K through 4000K at 70+, 80+ or 90+ CRI
- All aluminum and stainless steel construction
- Fully adjustable and lockable aiming with aiming index
- Universal voltage drivers and light engines are serviceable for replacement or upgrade



Performance

Precisely extruded acrylic lens produces an asymmetric distribution ideal for illuminating surfaces evenly.



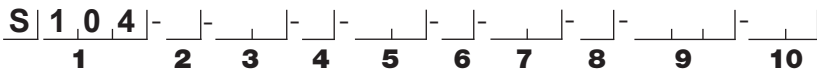
L90(10k) > 60,000 hrs. @ 25°C per TM-21



For LM79 and photometric reports, visit thelightingquotient.com



To form a Catalog Number



Project: _____

Type: _____

1 Style

S104 = Large smooth surface mounted asymmetric uplight with visor and integral driver

2 Output / Power

S = Standard output
H = High output

3 Length

12 = 12 inch (24W standard, 51W high output)
18 = 18 inch (51W standard, 101W high output)
24 = 24 inch (73W standard, 152W high output)

See [Scaled Performance Table](#)

4 Mounting

Z = External yoke on wall plate
Y = External yoke with integral splice compartment
X = External yoke for use with cantilever or pendant (required mounting hangers for **X** mount ordered and priced separately).

Cluster pendant assemblies (each requires a VPC pendant, ordered and priced separately):

- 1** = One-way assembly, **single** housing
- 2** = Two-way assembly, **two (2)** housings at 180°
- 3** = Three-way assembly, **three (3)** housings at 120°
- 4** = Four-way assembly, **four (4)** housings at 90°

5 Finish

02 = Semigloss white **13** = Matte Black **22** = Matte White
06 = Dark bronze* **15** = Metallic **PL** = Platinum
07 = Silver* **17** = Champagne* **99** = Custom or RAL, consult rep.*
08 = Semigloss black **18** = Copper*

02	22*	PL*	07*	15*
08	13*	06*	18*	17*

* = non-cancellable/returnable, Matte Black, Platinum not for use in natatorium

6 Voltage

M = 120-277V Universal voltage input
K = 347V input



7 Option

V0 = Cutoff visor included, no other options
VP = [Natorium](#) (pool) use
VX = For modification not listed, include detailed description. Consult factory prior to specification
Note: Cutoff visor included unless specified otherwise.

8 Destination Requirement

0 = CSA certified for U.S.
J = CSA certified for Canada

9 Color Temperature / CRI

927 = 2700K, 90+ CRI **TWH** = Tunable White 
930 = 3000K, 90+ CRI 2700K-6500K 90+CRI
935 = 3500K, 90+ CRI **RGB** = Color tunable 
940 = 4000K, 90+ CRI **RGBW** with 3500K, 90+ CRI white

Note: Additional CCT and CRI options are available; consult factory.

10 Dimming

00 = Non-dimming
ZX = 0-10V analog dimming 120-277V or 347V input, dimming 100%-1%, 0-10V controls by others
EL = 0-10V eldoLED SOLOdrive, 120-277V input, dimming 100%-0.1%, 0-10V controls by others
ED = DALI eldoLED SOLOdrive, 120-277V input, dimming 100%-0.1%, DALI controls by others
TD = ERP forward or reverse phase 120V only, dimming 100%-6%, 120V phase controls by others
DZ = TWH 2-Channel driver for use with (2) 0-10V controls by others
DD = TWH 2-Channel DALI driver (DALI controls by others)
DA = RGBW 4-Channel DMX module (DMX controls by others)
DM = RGBW 4-Channel eldoLED LINEARdrive (DMX controls by others)

Controls

AWB-TP-DMX-0 = RGBW LED dimmer switch fits in a standard wall switch box and provides on/off control as well as fixed levels of dimmability. The dimmer switch has a color-selection wheel for thousands of color options

Additional Wired and wireless controls available, see [Driver and Controls Information](#)

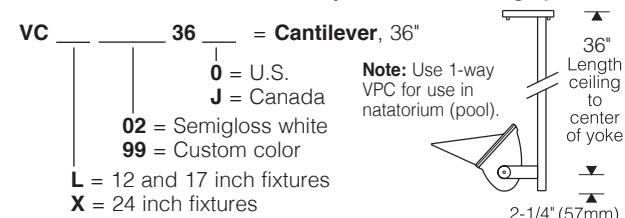


elliptipar from **The Lighting Quotient**
114 Boston Post Road, West Haven, Connecticut 06516, USA
Voice 203.931.4455 • Fax 203.931.4464 • [thelightingquotient.com](#)

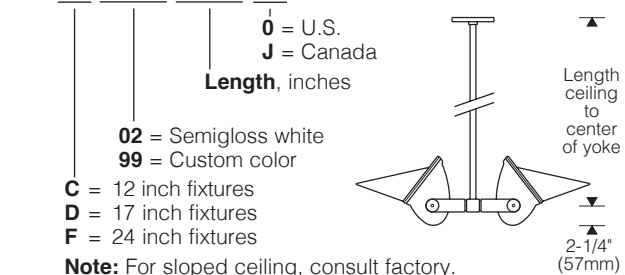
Required Mounting Hangers

Required mounting hangers for **X** mount fixtures are ordered and priced separately. See installation sheets on website.

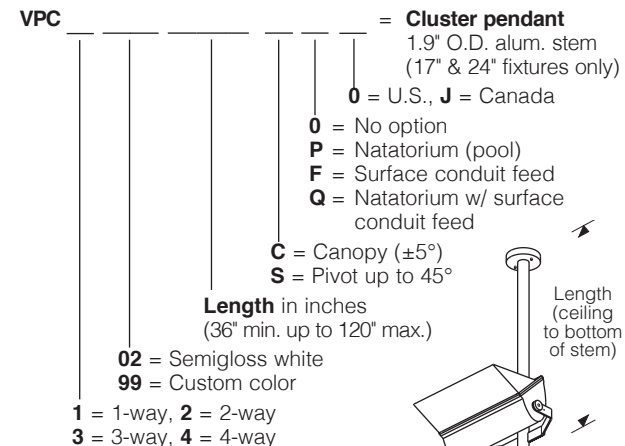
VCL, VCX, VDC, VDD or VDF required for mounting option **X**:



VD _____ = Uplight pendant (2-way only)



VPC required for mounting options **1, 2, 3, 4**:



The external shapes of the housings are trademarks of Sylvan R. Shemitz Designs, LLC dba **The Lighting Quotient**, makers of **elliptipar**, **tambient** and **fragtir**.

Certain products illustrated may be covered by applicable patents and patents pending. These specifications supersede all prior publications and are subject to change without notice. Copyright © 2021 Sylvan R. Shemitz Designs, LLC, all rights reserved.

