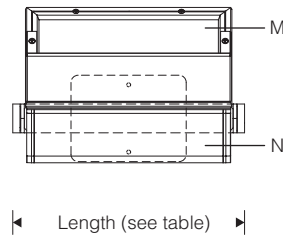
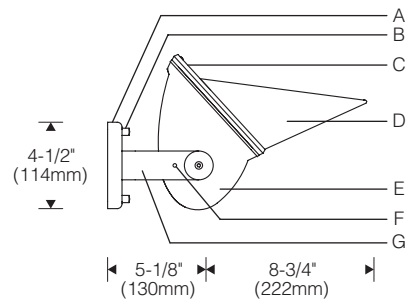
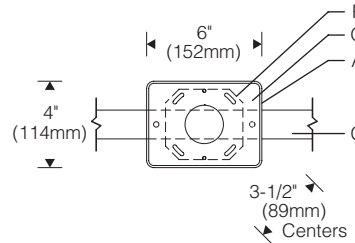


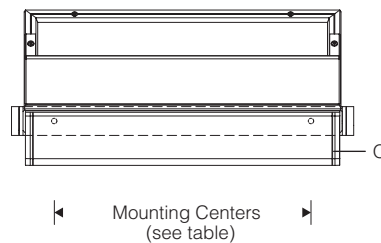
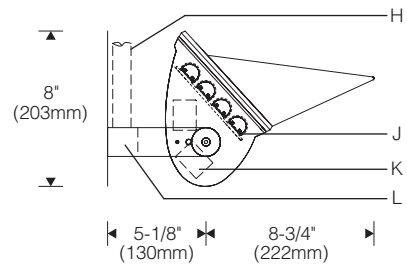
Z Mount 1:10 Scale



Mounting Plate (Z mount)

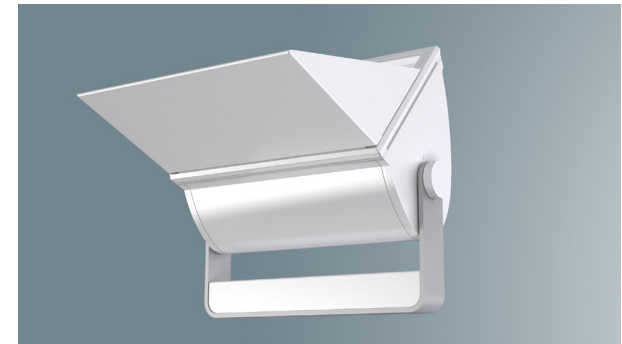
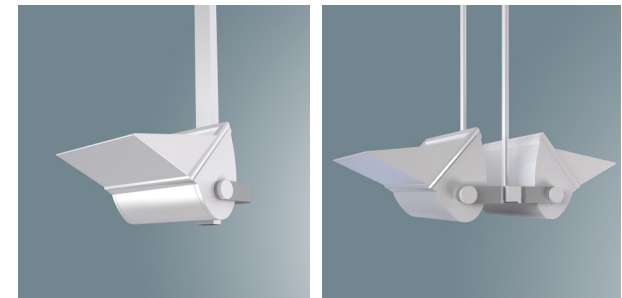


Y Mount 1:10 Scale



Length	Mounting*
12-1/16" (306mm)	8-7/8" (225mm)
17-13/16" (452mm)	14-5/8" (370mm)
24-7/8" (632mm)	21-11/16" (550mm)

*Mounting dimensions shown for Y mount only.



Specifications

- A** Aluminum canopy (Z mount)
- B** Chrome cap nuts
- C** Mitred extruded aluminum door frame w/ silicone gasket
- D** Solid cutoff visor (included)
- E** Die-cast end plates with aiming marks
- F** Locking set screw
- G** Aluminum yoke
- H** Conduit (by others)
- J** Field serviceable light engine with asymmetric optic
- K** Integral drivers
- L** Integral splice compartment with conduit entry and removable cover (Y mount)
- M** Micro-prismatic tempered glass lens
- N** Extruded aluminum housing
- O** Aluminum reveal plate (black)
- P** Outlet box (by others)
- Q** Aluminum mounting plate

Optic Assembly:

Two-piece extruded aluminum heat sink housing and light engine. Exterior heat sink anodized for maximum emissivity. Precision extruded polymer refractive lens with optimized asymmetric distribution. Light engine may be removed for service or upgrade. Clear Tempered microprismatic glass lens. Stainless steel hardware.

Finish:

Painted surfaces – 6 stage pretreatment and electrostatically applied thermoset polyester powder coating for a durable abrasion, fade and corrosion resistant finish. Formed aluminum visor.

Extruded aluminum heat sink/housing, canopy, yoke, door frame and decorative end plates are finished in semigloss white. All luminaire hardware is stainless steel; mounting hardware is zinc or electroplated steel.

Mounting:

Z mount – wall plate mounts to recessed outlet box (by others). Canopy conceals mounting plate and hardware.

Y mount – surface mounted yoke attaches with 1/4-20 fasteners (by others) concealed under splice cover.

Uplight pendant (back-to-back) or cantilever mounting assembly utilizes required mounting hangers (see pg. SC12.1) ordered and priced separately; specify **X** mount.

One, two, three or four-way cluster pendant assembly utilizes required mounting hangers (see pg. SC12.1) ordered and priced separately; specify **1**, **2**, **3** or **4** mount.

Fixture weights: 12" fixture 12.0 lb (5.4 kg); 17" fixture 16.0 lb (7.3 kg); 24" fixture 22.0 lb (10.0 kg).

Electrical:

Use 90°C wire for supply connections. Integral electronic HPF constant current driver. For complete driver specifications, see website, reference document [MA-1303](#).

Standard:

CSA certified to UL1598, UL8750, CSA C22.2 for dry locations; specify **VP** option for damp locations. Where pendant or cantilever may be exposed to wind, consult factory. 5 year warranty, maximum ambient temperature 45°C (113°F).

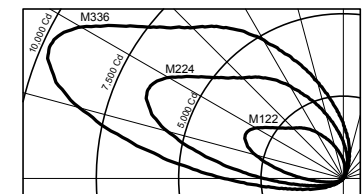
Features

- Maintains over 80% of initial light output beyond 60,000 hours
- 2700K through 4000K at 70+, 80+ or 90+ CRI
- All aluminum and stainless steel construction
- Fully adjustable and lockable aiming with aiming index
- Universal voltage drivers and light engines are serviceable for replacement or upgrade

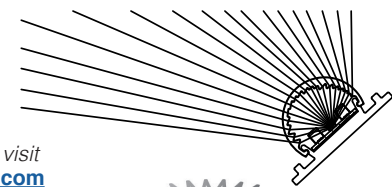


Performance

Precisely extruded acrylic lens produces an asymmetric distribution ideal for illuminating surfaces evenly.



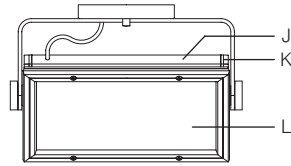
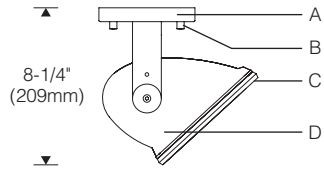
L90(10k) > 60,000 hrs. @ 25°C per TM-21



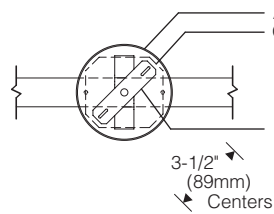
For LM79 and photometric reports, visit thelightingquotient.com



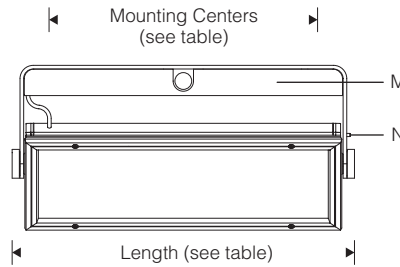
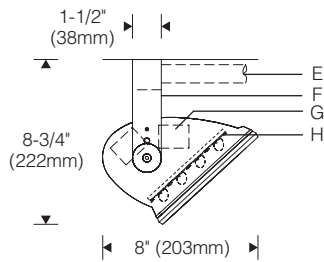
E Mount 1:10 Scale



Canopy (E mount)



Y Mount 1:10 Scale



Length	Mounting*
12-1/16" (306mm)	8-7/8" (225mm)
17-13/16" (452mm)	14-5/8" (370mm)
24-7/8" (632mm)	21-11/16" (550mm)

*Mounting dimensions shown for Y mount only.



Specifications

- A** Aluminum canopy (E mount)
- B** Chrome cap nuts
- C** Mitred extruded aluminum door frame w/ silicone gasket
- D** Die-cast end plates with aiming marks
- E** Conduit (by others)
- F** Aluminum yoke
- G** Integral drivers
- H** Field serviceable light engine with asymmetric optic
- J** Specular extruded aluminum housing
- K** Aluminum reveal plate (black)
- L** Micro-prismatic tempered glass lens
- M** Integral splice compartment with conduit entry and removable cover (Y mount)
- N** Locking set screw
- O** Outlet box (by others)
- P** Pivoting hanger bar

Optic Assembly:

Two-piece extruded aluminum heat sink housing and light engine. Exterior heat sink anodized for maximum emissivity. Precision extruded polymer refractive lens with optimized asymmetric distribution. Light engine may be removed for service or upgrade. Clear Tempered microprismatic glass lens. Stainless steel hardware.

Finish:

Painted surfaces – 6 stage pretreatment and electrostatically applied thermoset polyester powder coating for a durable abrasion, fade and corrosion resistant finish.

Extruded aluminum heat sink/housing, canopy, yoke, door frame and decorative end plates are finished in semigloss white. All luminaire hardware is stainless steel; mounting hardware is zinc or electroplated steel.

Mounting:

E mount – Round canopy plate mounts to recessed outlet box (by others). Canopy conceals mounting plate and hardware.

Y mount – surface mounted yoke attaches with 1/4-20 fasteners (by others) concealed under splice cover.

Wallwash pendant or cantilever mounting assembly utilizes required mounting hangers (see pg. SW15.1) ordered and priced separately; specify **X** mount.

Use 90°C wire for supply connections. Integral electronic HPP constant current driver. For complete driver specifications, see website, reference document [MA-1303](#).

Fixture weights: 12" fixture 12.0 lb (5.4 kg); 17" fixture 16.0 lb (7.3 kg); 24" fixture 22.0 lb (10.0 kg).

Standard:

CSA certified to UL1598, UL8750, CSA C22.2 for dry locations; specify **OP** option for damp locations. Where pendant or cantilever may be exposed to wind, consult factory. 5 year warranty, maximum ambient temperature 45°C (113°F).

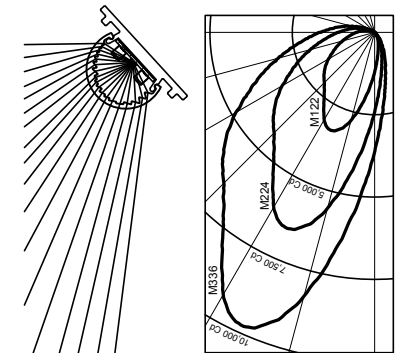
Features

- Maintains over 80% of initial light output beyond 36,000 hours
- 2700K through 4000K at 70+, 80+ or 90+ CRI
- All aluminum and stainless steel construction
- Fully adjustable and lockable aiming with aiming index
- Universal voltage drivers and light engines are serviceable for replacement or upgrade



Performance

Precisely extruded acrylic lens produces an asymmetric distribution ideal for illuminating vertical surfaces evenly from top to bottom.



L90(10k) > 60,000 hrs. @ 25°C per TM-21

For LM79 and photometric reports, visit theightingquotient.com



