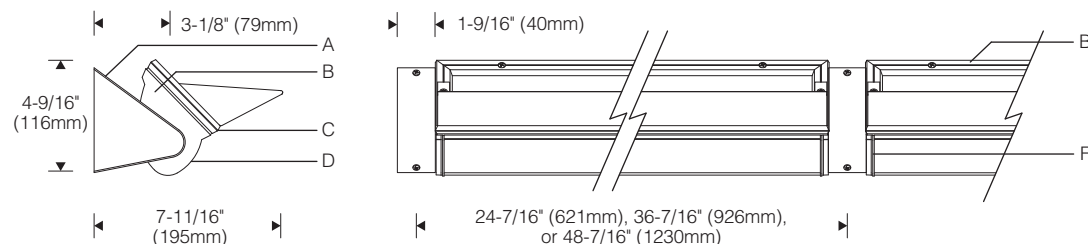
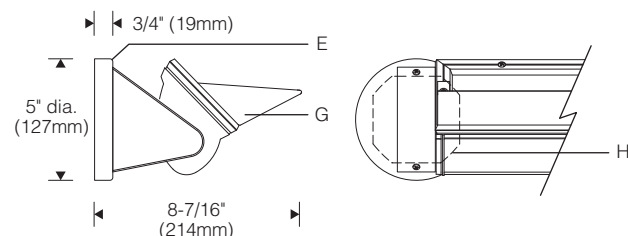
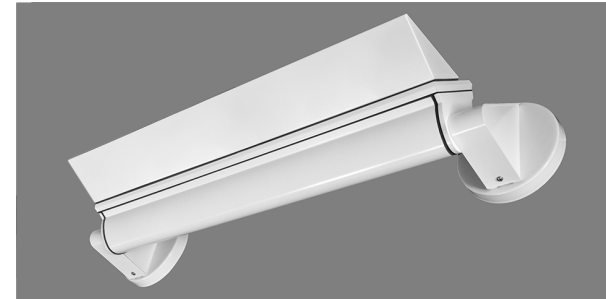
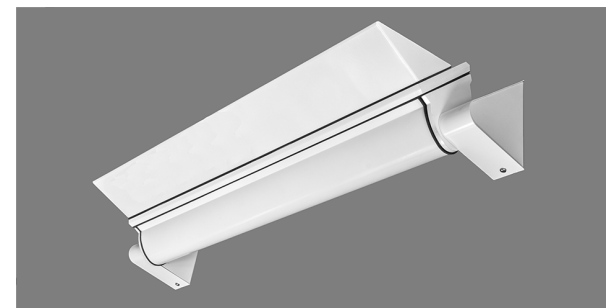
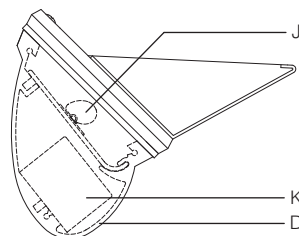


**Surface Mount: Conduit Feed** 1:8 Scale**Surface Mount: Canopy** 1:8 Scale**Internal Components** 1:4 Scale**Specifications**

- |  |  |   |
|--|--|---|
| <b>A</b> Conduit feed hanger bracket splice compartment with cover                                 | <b>D</b> Extruded aluminum heat sink/housing     | <b>H</b> Recessed outlet box (by others)                                      |
| <b>B</b> Die-cast aluminum end plate   | <b>E</b> 5" dia. aluminum canopy (pendant mount) | <b>J</b> Field serviceable light engine with <b>fraqtir™</b> asymmetric optic |
| <b>C</b> Extruded aluminum door frame with mitered corners and tempered micro-prismatic glass lens | <b>F</b> Aluminum reveal plate                   | <b>K</b> Integral high power factor constant current driver                   |
|  | <b>G</b> Aluminum cutoff visor                   |   |

**Optic Assembly:**

Two-piece extruded aluminum heat sink housing and light engine. Exterior heat sink anodized for maximum emissivity. Removable interior extrusion treated to maximize thermal conductivity. Precision formed asymmetric optical light bar of high temperature, water-clear acrylic. Tempered micro-prismatic glass lens with elliptical distribution holographic diffuser; maximizes lateral distribution without disturbing asymmetric forward throw.

**Finish:**

Exterior surfaces – 6 stage pretreatment and electrostatically applied thermoset polyester powder coating for a durable abrasion, fade and corrosion resistant finish.

Extruded aluminum heat sink/housing, yoke arms, door frame and decorative end plates are finished in semigloss white. All luminaire hardware is stainless steel; all mounting hardware is zinc or electroplated steel.

**Mounting:**

Required surface mounting hangers — ordered and priced separately; see pg. SC6.1. Specify end and intermediate hangers as needed.

Surface hanger mounts directly to wall. To mount over recessed outlet box, specify optional canopy.

Fixture weight: 3.5 lb/ft (5.1 kg/m).

**Electrical:**

Integral electronic HPF constant current driver(s). For complete driver specifications, see website, reference document [MA-1303](#). Luminaire provided with 12" leads for connection to supply wiring within mounting hangers (ordered separately). Intermediate hangers allow for through-wiring when mounted in rows.

**Standard:**

UL listed or CSA certified for dry locations. 5 year warranty, maximum ambient temperature 45°C (113°F).

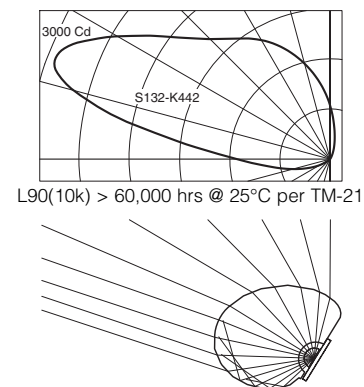
**Features**

- Evenly illuminates entire surface from one edge
- Adjustable aiming to tailor light distribution to the application
- Hangers allow for through-wiring and access to splices
- Several CCT, CRI and lumen packages available

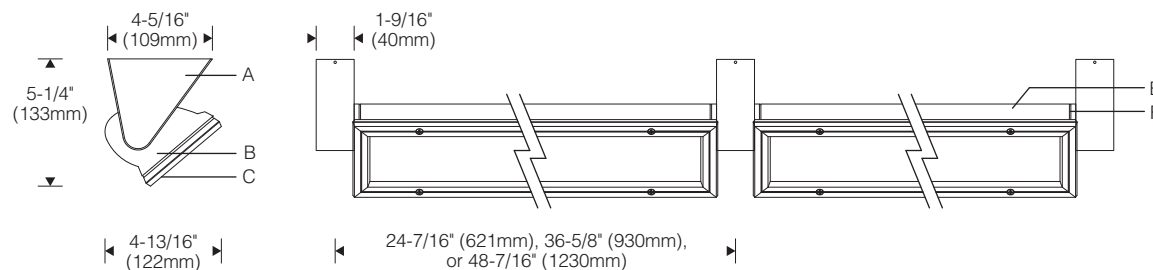
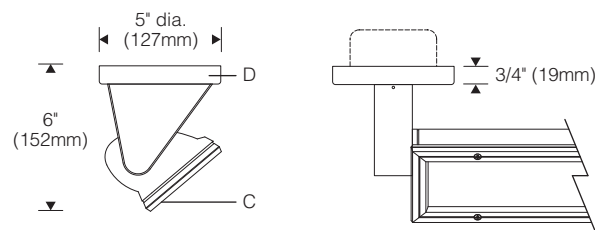
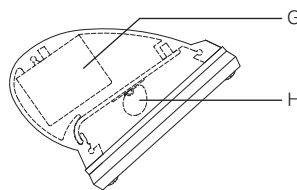
**Performance**

**fraqtir** technology uses a combination of refraction and total internal reflection, creating a distribution of light ideal for illuminating surfaces uniformly. Glare is minimized while light delivered to the target is maximized, resulting in high application efficiency.

For LM79 and photometric reports, visit [thelightingquotient.com](http://thelightingquotient.com)





**Surface Mount: Conduit Feed** 1:8 Scale**Surface Mount: Canopy** 1:8 Scale**Internal Components** 1:4 Scale**Specifications**

- |  |  |  |
|--|--|--|
| <b>A</b> Conduit feed hanger bracket splice compartment with cover                                 | <b>D</b> 5" dia. aluminum canopy (pendant mount) | <b>G</b> Integral high power factor constant current driver                    |
| <b>B</b> Die-cast aluminum end plate   | <b>E</b> Extruded aluminum heat sink/housing     | <b>H</b> Field serviceable light engine with <b>fraqtir</b> ™ asymmetric optic |
| <b>C</b> Extruded aluminum door frame with mitered corners and tempered micro-prismatic glass lens | <b>F</b> Aluminum reveal plate                   |  |

**Optic Assembly:**

Two-piece extruded aluminum heat sink housing and light engine. Exterior heat sink anodized for maximum emissivity. Removable interior extrusion treated to maximize thermal conductivity. Precision formed asymmetric optical light bar of high temperature, water-clear acrylic. Tempered micro-prismatic glass lens with elliptical distribution holographic diffuser; maximizes lateral distribution without disturbing asymmetric forward throw.

**Finish:**

Exterior surfaces – 6 stage pretreatment and electrostatically applied thermoset polyester powder coating for a durable abrasion, fade and corrosion resistant finish.

Extruded aluminum heat sink/housing, yoke arms, door frame and decorative end plates are finished in semigloss white.

All luminaire hardware is stainless steel; mounting hardware is zinc or electroplated steel.

**Mounting:**

Required surface mounting hangers ordered and priced separately, see pg. SW10.1. Specify end and intermediate hangers.

Surface hanger mounts directly to ceiling. To mount over recessed outlet box, specify optional canopy.

Fixture weight: 3.5 lb/ft (5.1 kg/m).

**Electrical:**

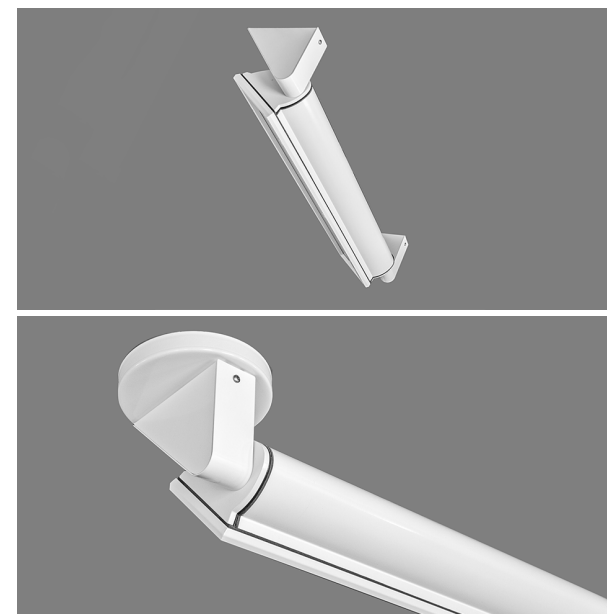
Integral electronic HPF constant current driver(s). For complete driver specifications, see website, reference document **MA-1303**.

Luminaire provided with 12" leads for connection to supply wiring within mounting hangers (ordered separately).

Intermediate hangers allow for through-wiring when mounted in rows.

**Standard:**

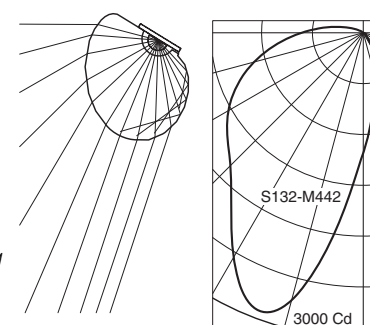
UL listed or CSA certified for dry locations.  
5 year warranty, maximum ambient temperature 45°C (113°F).

**Features**

- Evenly lights entire wall
- Hanger allows direct conduit feed – optional canopy
- Adjustable aiming – tailor distribution to wall height and setback distance
- Several lumen packages that put the light on target

**Performance**

**fraqtir** technology uses a combination of refraction and total internal reflection, creating a distribution of light ideal for illuminating surfaces uniformly. Glare is minimized while light delivered to the target is maximized, resulting in high application efficiency.

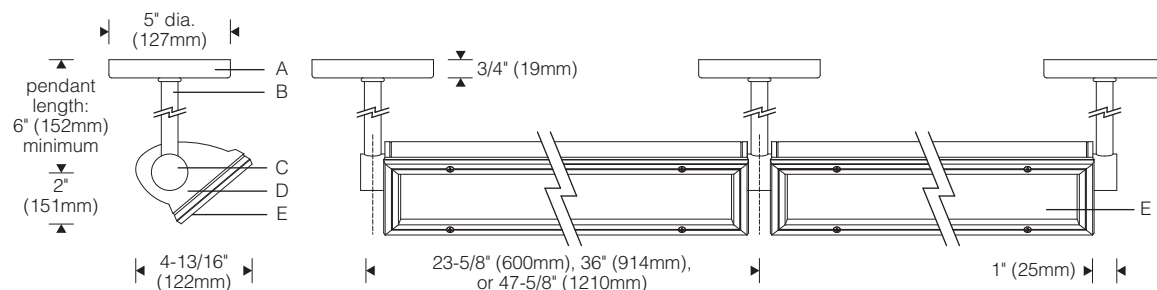
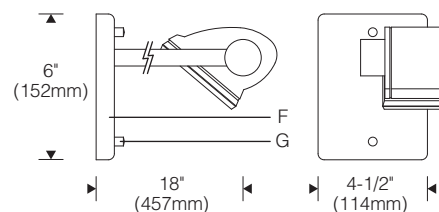
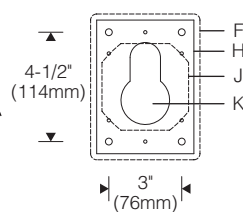
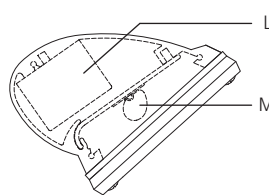


For LM79 and photometric reports, visit [thelightingquotient.com](http://thelightingquotient.com)

L90(10k) > 60,000 hrs  
@ 25°C per TM-21





**Pendant Mount** 1:8 Scale**Cantilever Mount** 1:8 Scale**Mounting Plate****Internal Components** 1:4 Scale**Specifications**

- |  |  |                                    |   |
|--|--|------------------------------------|---|
| <b>A</b> 5" dia. aluminum canopy (pendant mount) | <b>E</b> Extruded aluminum door frame with mitered corners and tempered micro-prismatic glass lens | <b>G</b> Chrome cap nuts           | <b>L</b> Integral high power factor constant current driver |
| <b>B</b> Extruded aluminum pendant stem          | <b>F</b> Rectangular aluminum canopy (cantilever mount)  | <b>H</b> Cantilever mounting plate | <b>M</b> Field serviceable light engine with fraqtir™ optic |
| <b>C</b> Machined aluminum hub                   |  | <b>J</b> Outlet box (by others)    |   |
| <b>D</b> Die-cast aluminum end plate             |  | <b>K</b> Splice access opening     |   |

**Optic Assembly:**

Two-piece extruded aluminum heat sink housing and light engine. Exterior heat sink anodized for maximum emissivity. Removable interior extrusion treated to maximize thermal conductivity. Precision formed asymmetric optical light bar of high temperature, water-clear acrylic. Tempered micro-prismatic glass lens with elliptical distribution holographic diffuser; maximizes lateral distribution without disturbing asymmetric forward throw.

**Finish:**

Exterior surfaces – 6 stage pretreatment and electrostatically applied thermoset polyester powder coating for a durable abrasion, fade and corrosion resistant finish.

Extruded aluminum heat sink/housing, yoke arms, door frame and decorative end plates are finished in semigloss white.

All luminaire hardware is stainless steel; mounting hardware is zinc or electroplated steel.

**Mounting:**

Required pendant or cantilever mounting hangers for **X** mount ordered and priced separately; see pg. SW11.1. Pendant

assembly furnished with canopy for mounting onto recessed outlet box. Optional hang-straight allows mounting on slopes up to 45° (in the plane perpendicular to wall). Cantilever wall plate mounts over recessed outlet box (suitable backing structure required). Adjustable interface plate (concealed under canopy) allows for leveling of arms.

Fixture weight: 3.5 lb/ft (5.1 kg/m).

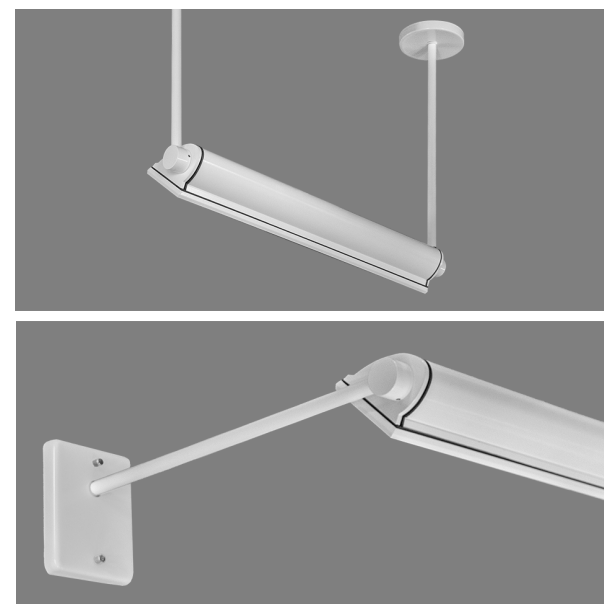
**Electrical:**

Integral electronic HPF constant current driver(s), dimming drivers are optional. **X** mount: 84" leads exit one end of housing (**OF** option, 84" leads exit both ends for feed-through wiring).

For complete driver specifications, see website, reference document [MA-1303](#).

**Standard:**

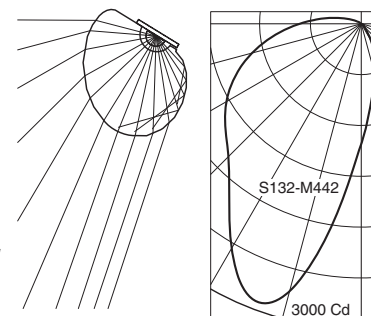
UL listed or CSA certified for dry locations.  
5 year warranty, maximum ambient temperature 45°C (113°F).

**Features**

- Evenly lights entire wall
- Versatile – pendant or cantilever mounting options
- Adjustable aiming – tailor distribution to wall height and setback distance
- Several lumen packages that put the light on target

**Performance**

*fraqtir technology uses a combination of refraction and total internal reflection, creating a distribution of light ideal for illuminating surfaces uniformly. Glare is minimized while light delivered to the target is maximized, resulting in high application efficiency.*



For LM79 and photometric reports, visit [thelightingquotient.com](http://thelightingquotient.com)

L90(10k) > 60,000 hrs  
@ 25°C per TM-21





