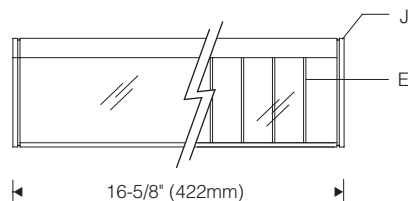
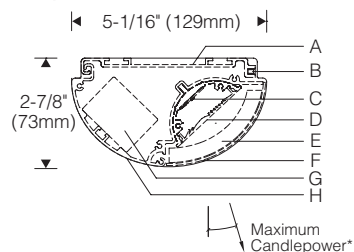
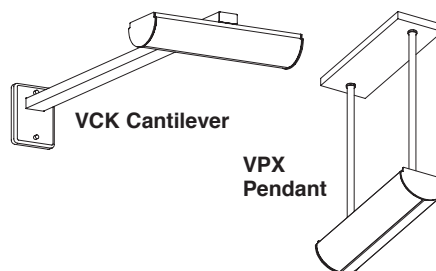


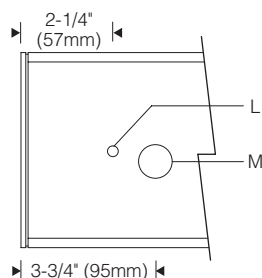
Style S142 1:5 Scale



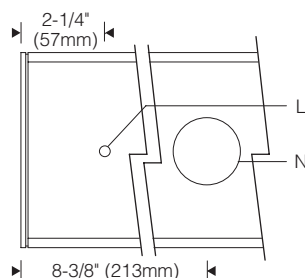
Accessories (X Mount)



Top View (S Mount) 1:5 Scale



Top View (C Mount) 1:5 Scale

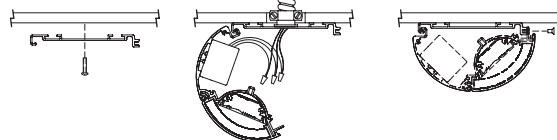


Installation (S mount)

Secure mounting plate to ceiling, fasteners by others

Hang housing, connect supply wiring

Hinge closed, secure with screws



Specifications

- | | | | |
|---|---|---|---|
| A Extruded aluminum mounting plate | D Extruded acrylic beam shaping lens | G High power factor constant current electronic driver | L Mounting hole 9/32" (7mm) diameter |
| B Closure screws | E Optional cross baffle (gray) | H Extruded aluminum housing | M Knockout 7/8" (22mm) diameter |
| C Serviceable light engine | F Extruded acrylic hinging lens | J Aluminum decorative end plates, included | N Access hole to j-box |

Finish:

Painted surfaces – 6 stage pretreatment and electrostatically applied thermoset powder coat for stable, long lasting and corrosion resistant finish. Extruded aluminum mounting plate and housing, formed aluminum end plates. All luminaire hardware – stainless steel.

Optic Assembly:

Light engine – extruded aluminum heat sink with linear array of high power LEDs. Light engines are removable for replacement or upgrade. Precision extruded optical lens of high temperature, water-clear acrylic. Elliptical distribution holographic diffuser maximizes lateral distribution without disturbing asymmetric distribution.

Mounting:

C mount – mounting plate fastens flush to ceiling over recessed outlet box. Unit hinges open for hands-free wiring.

S mount – mounting plate fastens flush to ceiling for direct conduit feed. Unit hinges open for hands-free wiring.

X mount – required hanger assemblies for pendant stems or cantilever ordered and priced separately (see pg. SW19.1).

Pendant stems – 11/16" O.D. aluminum, 5" x 15" ceiling canopy.

Cantilever arm – 2"W x 1"H steel arm, 4.5" x 6" wall canopy.

Fixture weight: 4.2 lbs (1.9 kg).

Electrical:

Use 90°C wire for supply connections. Integral electronic HPF thermally protected Class 2 driver. For complete driver specifications, see website, reference document [MA-1303](#). Driver/wireway compartment includes one conduit entry at each end. Channel cover is removable for access to driver and wiring. Luminaires may be butted end-to-end (connectors by others) for through wiring. Optional, compatible dimming controls (by others). See website for dimming compatibility and specifications.

Standard:

UL listed or CSA certified for dry location.

For damp locations, specify **DL** or **DB** option.

5 year warranty, maximum ambient temperature 45°C (113°F).

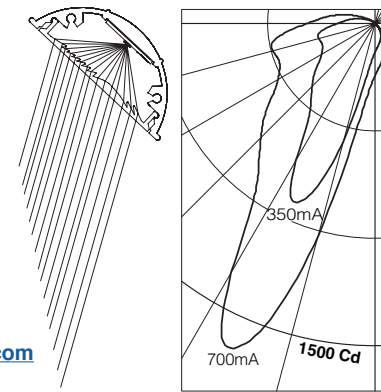
Features

- Inconspicuous low profile – lights entire wall evenly without emphasizing surface imperfections (unlike slot grazers)
- Compact size with integral driver
- Asymmetric distribution — evenly lights vertical surfaces
- Light engines serviceable for replacement or future upgrade

Performance

Precisely extruded acrylic lens produces an asymmetric distribution ideal for illuminating vertical surfaces evenly from top to bottom.

For LM79 and photometric reports, visit thelightingquotient.com



L90(10k) > 60,000 hrs. @ 25°C per TM-21



To form a Catalog Number

S 1 4 2 - - - - - - - - -

1 2 3 4 5 6 7 8 9 10

Project:

Type: _____

1 Style

S142 = Small enclosed semi-elliptical LED 8" long point source with integral driver

2 Output / Power

S = Standard output
H = High output

3 Length

16 = 16 inch nominal length (S=16W, H=32W)

See [Scaled Performance Table](#)

4 Mounting

C = Ceiling mount over recessed outlet box
S = Ceiling mount for direct conduit feed
X = For use with cantilever or pendant stem — required hangers ordered and priced separately

5 Finish

02 = Semigloss white 13 = Matte Black 22 = Matte White
06 = Dark bronze* 15 = Metallic PL = Platinum
07 = Silver* 17 = Champagne* 99 = Custom or RAL,
08 = Semigloss black 18 = Copper* consult rep.*

02	22*	PL*	07*	15*
08	13*	06*	18*	17*

* = non-cancellable/returnable

6 Voltage

M = 120-277V Universal voltage input
K = 347V input (remote driver only)

7 Option (See Accessories Section for specifications)

L0 = Clear lens (included in fixture)
DL = Clear lens with gaskets for damp location
LB = Clear lens and baffle
DB = Clear lens and baffle for damp location
LM = For use in MRI medical facility (drivers remote mounted).
 MRI filters required on output of each remote driver,
 ordered and priced separately. Consult factory prior to
 specification.

8 Destination Requirement


0 = UL listed or CSA certified for U.S.
J = UL listed or CSA certified for Canada

9 Color Temperature / CRI

927 = 2700K, 90+ CRI
930 = 3000K, 90+ CRI
935 = 3500K, 90+ CRI
940 = 4000K, 90+ CRI

TWH = Tunable White
 2700K-6500K 90+CRI

RGB = Color tunable
 RGBW with
 3500K, 90+ CRI white



The diagram illustrates two color tunable lighting options. On the left, a vertical stack of four colored circles (yellow, orange, red, blue) is labeled 'tunable white'. On the right, a circular color wheel with segments of red, orange, yellow, green, blue, and purple is labeled 'rgbw'. Below the color wheel, the text '3500K, 90+ CRI white' is displayed.

10 Dimming

00 = Non-dimming

ZX = 0-10V analog dimming 120-277V or 347V input,
dimming 100%-1%, 0-10V controls by others

EL = 0-10V eldoLED SOLOdrive, 120-277V input, dimming
100%-0.1%, 0-10V controls by others

ED = DALI eldoLED SOLOdrive, 120-277V input, dimming
100%-0.1%, DALI controls by others

TD = ERP forward or reverse phase 120V only, dimming
100%-6%, 120V phase controls by others

DZ = TWH 2-Channel driver for use with (2) 0-10V controls
by others

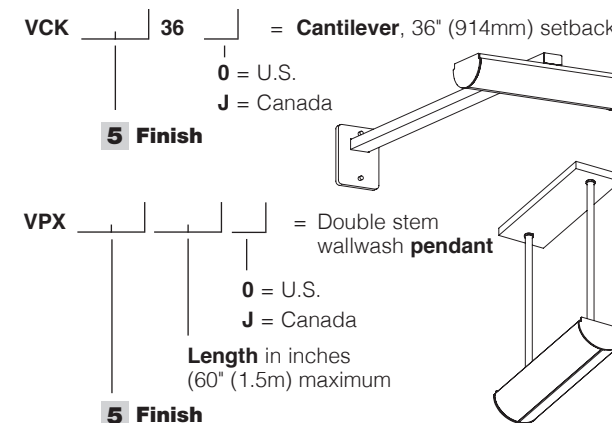
DD = TWH 2-Channel DALI driver (DALI controls by others)

DA = RGBW 4-Channel DMX module (DMX controls
by others)

DM = RGBW 4-Channel eldoLED LINEARdrive (DMX controls
by others)

Required Mounting Hangers (X mount)

Required mounting hangers for **X** mount fixtures are ordered and priced separately. See installation sheets on website. Order one hanger for each **X** mount luminaire. **VCK or VPX hangers are required for X mount S142.**



Note: For sloped ceiling pendant, consult factory.

Controls

AWB-TP-DMX-0 = RGBW LED dimmer switch fits in a standard wall switch box and provides on/off control as well as fixed levels of dimmability. The dimmer switch has a color-selection wheel for thousands of color options, 10 dynamic color-changing/single color modes, 0-100% dimming, on/off controls, and 4 color-specific channel controls for red, green, blue, and white.

Additional Wired and wireless controls available, see [Driver and Controls Information](#)

