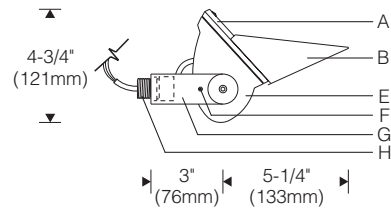
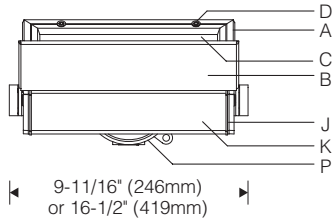


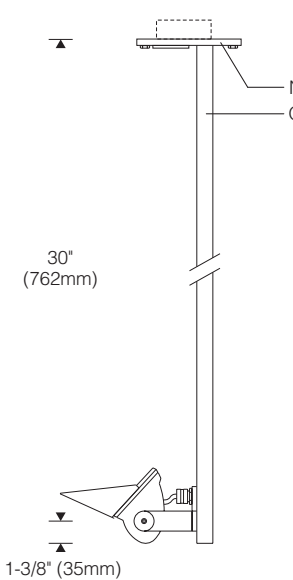
V Mount 1:8 Scale



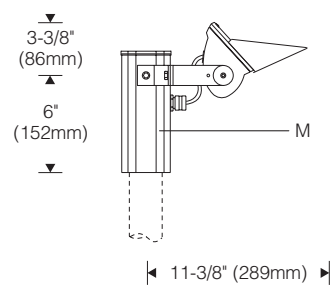
S Mount 1:8 Scale
(weatherproof outlet box included)



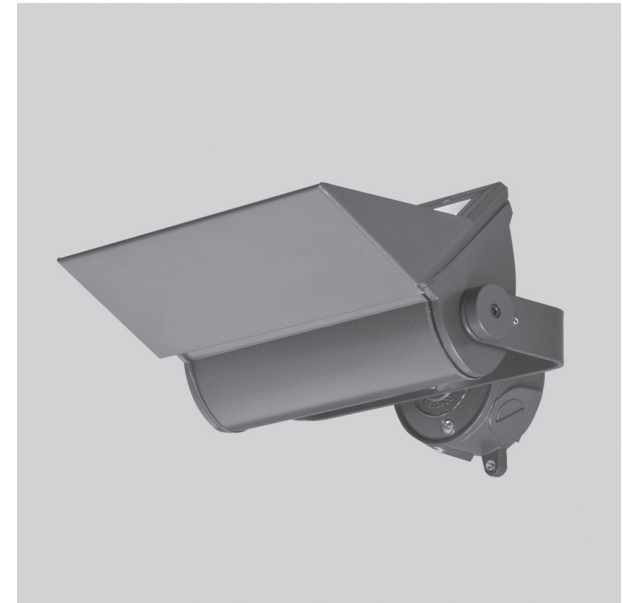
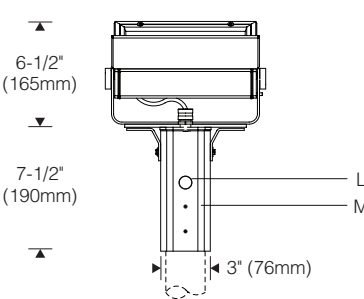
Cantilever 1:12 Scale
(for use with X mount)



Side-Mount Slipfitter 1:12 Scale
(for use with X mount)



Top-Mount Slipfitter 1:12 Scale
(for use with X mount)



Specifications

- | | | | |
|---|---|---|--|
| A Mitred extruded aluminum door frame | D Tamper-resistant captive door screws | K Specular extruded aluminum housing | N Welded aluminum mounting plate with splice access cover |
| B Aluminum cutoff visor (included) | E Die-cast aluminum end plates | L 1/2" NPT entry (with plug) | O 1" x 1-1/2" aluminum arm |
| C Clear impact resistant tempered glass lens | F Locking set screw | M Extruded aluminum slipfitter for 2-3/8" O.D. pole or tenon | P Weatherproof outlet box (S mount) |
| | G Aluminum yoke | | |
| | H 1/2" NPT nipple | | |
| | J Aluminum reveal plates (black) | | |

Optic Assembly:

Two-piece extruded aluminum heat sink housing and light engine. Exterior heat sink anodized for maximum emissivity. Removable interior extrusion treated to maximize thermal conductivity. Precision extruded polymer refractive lens with optimal distribution. Tempered microprismatic glass.

Finish:

Exterior surfaces – 6 stage pretreatment and electrostatically applied thermoset polyester powder coating for a durable abrasion, fade and corrosion resistant finish. Choice of semigloss colors (see ordering information).

Extruded aluminum heat sink/housing plus yoke, door frame and decorative end plates are finished in color. All hardware and components – non-corrosive stainless steel or aluminum.

Mounting:

S mount provided with 1/2" NPT nipple, wet location outlet box and cover finished to match the luminaire. V mount provided with 1/2" NPT nipple only.

X mount for use with required aluminum cantilever or slipfitter — ordered and priced separately; see SU1.1. Top or side mount slipfitter for 2-3/8" O.D. stanchion, pole (by others). Fixture weight: 4.5 lb (2.0 kg).

Electrical:

Integral electronic HPF constant current driver. For complete driver specifications, see website, reference document [MA-1303](#). Leads exit housing through watertight flush cord entry and silicone coated fiberglass sleeving with 8" (.2m) exposed beyond nipple. 60" (1.5m) leads for X mount.

Standard:

UL listed or CSA certified for wet locations. Approved for use in interior damp locations such as natatoriums. 5 year warranty, maximum ambient temperature 45°C (113°F).

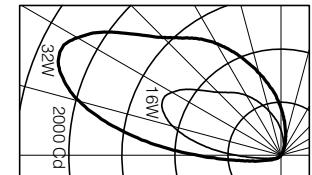
Features

- Compact size, – ideal for unobtrusively uplighting soffits, canopies, vaults
- Durable and secure – thermal and impact resistant lens, tamper-resistant fasteners, set screw in yoke locks aiming
- Precured silicone gaskets, unique flush cord entry – seal out dirt and moisture, maintain performance



Performance

Precisely extruded polymer lens produces an asymmetric distribution ideal for illuminating horizontal surfaces evenly.



L90(10k) > 60,000 hrs. @ 25°C per TM-21

For LM79 and photometric reports, visit thelightingquotient.com



To form a Catalog Number

S | 1 | 7 | 0 | - | | - | | - | | - | | - | | - | V | - | | - | | - | |

1 2 3 4 5 6 7 8 9 10

Project: _____

Type: _____

1 Style

S170 = Small smooth surface mounted asymmetric with integral driver

2 Output / Power

S = Standard output
H = High output

3 Length

09 = 9 inch length (S=8W, H=16W)
16 = 16 inch length (S=16W, H=32W)

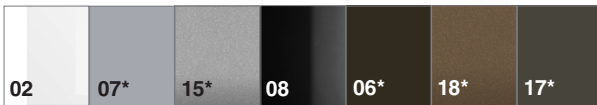
See [Scaled Performance Table](#)

4 Mounting

S = External yoke with 1/2" NPT nipple, wet location outlet box and cover finished to match luminaire
V = External yoke with 1/2" NPT nipple (box, cover by others)
X = External yoke for use with required cantilever or slipfitter ordered and priced separately, see hangers at right

5 Finish

02 = Semigloss white **15** = Metallic **99** = Custom or RAL, consult sales rep.*
06 = Dark bronze* **17** = Champagne*
07 = Silver* **18** = Copper*



* = non-cancellable/returnable

6 Voltage

M = 120-277V Universal voltage input
K = 347V input

7 Option (see Accessories Section for specifications)

V0 = Cutoff visor included, no other options
VX = For modification not listed, include detailed description. Consult factory prior to specification.

Note: Cutoff visor included unless specified otherwise.

8 Destination Requirement

0 = UL listed or CSA certified for U.S.
J = UL listed or CSA certified for Canada

9 Color Temperature / CRI

927 = 2700K, 90+ CRI **TWH** = Tunable White
930 = 3000K, 90+ CRI 2700K-6500K 90+CRI
935 = 3500K, 90+ CRI **RGB** = Color tunable
940 = 4000K, 90+ CRI RGBW with 3500K, 90+ CRI white

Note: Additional CCT and CRI options are available; consult factory.

10 Dimming

00 = Non-dimming
ZX = 0-10V analog dimming 120-277V or 347V input, dimming 100%-1%, 0-10V controls by others
EL = 0-10V eldoLED SOLOdrive, 120-277V input, dimming 100%-0.1%, 0-10V controls by others
ED = DALI eldoLED SOLOdrive, 120-277V input, dimming 100%-0.1%, DALI controls by others
TD = ERP forward or reverse phase 120V only, dimming 100%-6%, 120V phase controls by others
DZ = TWH 2-Channel driver for use with (2) 0-10V controls by others
DD = TWH 2-Channel DALI driver (DALI controls by others)
DA = RGBW 4-Channel DMX module (DMX controls by others)
DM = RGBW 4-Channel eldoLED LINEARdrive (DMX controls by others)

Required Mounting Hangers (X mount)

Required **ACJ** or **ASP** mounting hangers for **X** mount cantilever or slipfitter fixtures are ordered and priced separately. See installation sheets on website.

ACJ | **30** = **Cantilever**,
30" (760mm) setback
(for use with **X** mount unit)
0 = U.S.
J = Canada

5 Finish

AMS | **000** = Surface mount **splice box**
for use with ACJ cantilever

5 Finish

ASP | **T10** = **Top-mount slipfitter**,
for 2-3/8" O.D. pole,
stanchion or tenon
(for use with single
X mount unit)

5 Finish

ASP | **S** | **0** = **Side-mount slipfitter**,
for 2-3/8" O.D. pole,
stanchion or tenon
(for use with
X mount units)

1 = Single unit
2 = Double unit
(back to back)

5 Finish

Controls

AWB-TP-DMX-0 = RGBW LED dimmer switch fits in a standard wall switch box and provides on/off control as well as fixed levels of dimmability. The dimmer switch has a color-selection wheel for thousands of color options, 10 dynamic color-changing/single color modes, 0-100% dimming, on/off controls, and 4 color-specific channel controls for red, green, blue, and white.



Additional Wired and wireless controls available, see [Driver and Controls Information](#)

The external shapes of the housings are trademarks of Sylvan R. Shemitz Designs, LLC dba **The Lighting Quotient**, makers of **elliptipar**, **tambient** and **fragtir**.

Certain products illustrated may be covered by applicable patents and patents pending. These specifications supersede all prior publications and are subject to change without notice. Copyright © 2021 Sylvan R. Shemitz Designs, LLC, all rights reserved.



elliptipar from **The Lighting Quotient**
114 Boston Post Road, West Haven, Connecticut 06516, USA
Voice 203.931.4455 • Fax 203.931.4464 • thelightingquotient.com