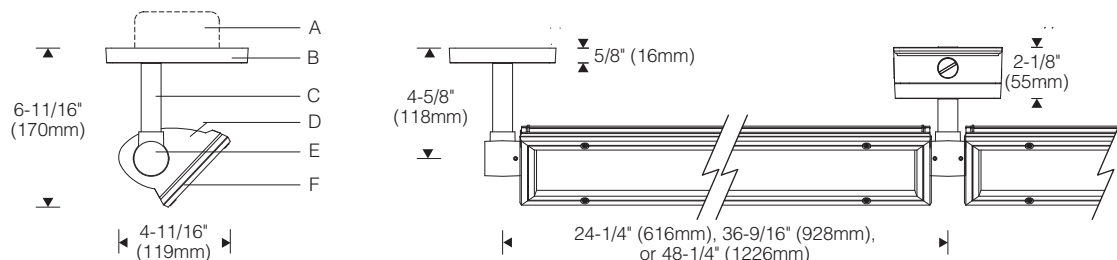
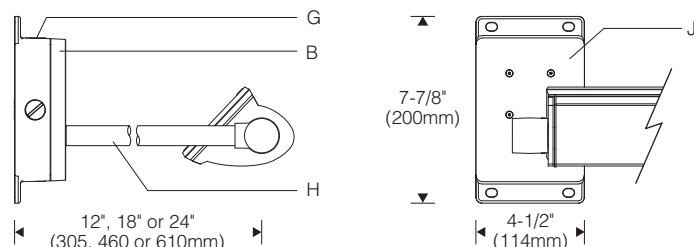
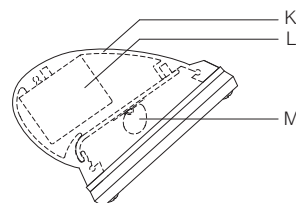


Surface Hanger (Lighting Downward) 1:8 Scale**Cantilever Hanger with Splice Box****Internal Components** 1:4 Scale**Specifications**

- | | | | |
|---|---|--|--|
| A Recessed outlet box (by others) | D Die-cast aluminum end plate | G Die-cast aluminum splice box | L Integral high power factor constant current driver |
| B Die-cast aluminum mounting plate | E Die-cast aluminum hub (1.5"W x 1.5" dia.) | H Schedule 40 galvanized steel cantilever arm (7/8" O.D.) | M Field serviceable light engine with fraqtir™ asymmetric optic |
| C Aluminum surface hanger stem | F Extruded aluminum door frame with mitered corners, tempered micro-prismatic glass lens | J Aluminum access cover with silicone gaskets | |
| | | K Extruded aluminum heat sink/housing | |

Optic Assembly:

Two-piece extruded aluminum heat sink housing and light engine. Precision formed asymmetric optical light bar of high temperature, water-clear acrylic. Extruded aluminum door frame with tamper-resistant fasteners. Tempered microprismatic glass lens and holographic diffuser with silicone gasket for watertight operation when facing upward or downward.

Finish:

Exterior surfaces – 6 stage pretreatment and electrostatically applied thermoset polyester powder coating for a durable abrasion, fade and corrosion resistant finish. All hardware and components – non-corrosive stainless steel or aluminum.

Electrical:

Integral electronic HPF constant current driver(s), dimming drivers are optional. For complete driver specifications, see website, reference document [MA-1303](#). 84" leads exit one end of housing (**0F** option, 84" leads exit both ends for feed-through wiring).

Mounting:

Required 1-1/2" diameter x 1-1/2" aluminum hubs with 1/2" NPT threaded entry, ordered and priced separately. Housing aiming is adjustable – locks with set screws. Alternately, order hubs with surface, pendant or cantilever hangers (see SV2.1). Hangers include aluminum mounting plate, cover plate and hub with 7/8" O.D. steel arm/stem. Specify end kit or intermediate hubs/hangers.

Fixture weight: 3.5 lb/ft (5.2 kg/m).

Standard:

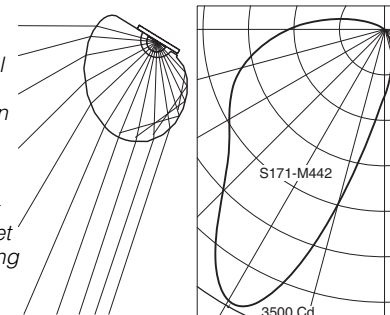
UL listed or CSA certified for wet locations when mounted horizontally. For positions other than horizontal, consult factory. 5 year warranty, maximum ambient temperature 45°C (113°F).

Features

- Watertight operation facing up or down
- Rugged all aluminum and stainless steel construction – polyester powder coat exceeds 1000 hour salt spray test
- Versatile – surface, cantilever or pendant mount
- Several lumen packages that put the light on target

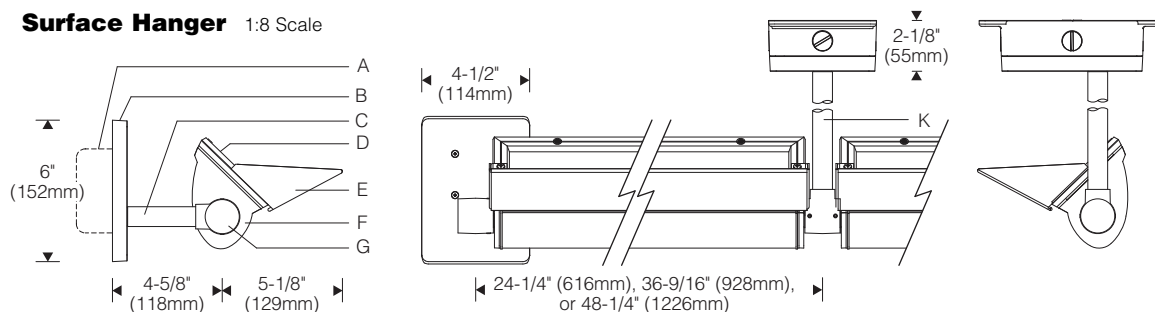
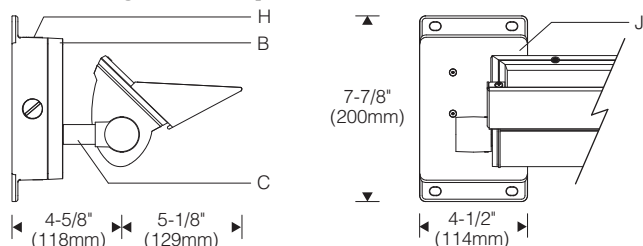
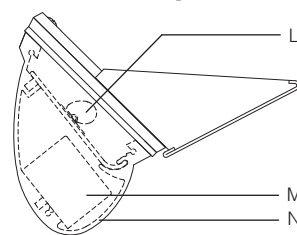
Performance

fraqtir technology uses a combination of refraction and total internal reflection, creating a distribution of light ideal for illuminating surfaces uniformly. Glare is minimized while light delivered to the target is maximized, resulting in high application efficiency.



For LM79 and photometric reports, visit thelightingquotient.com

L90(10k) > 60,000 hrs.
@ 25°C per TM-21

Surface Hanger 1:8 Scale

Surface Hanger with Splice Box 1:8 Scale

Internal Components 1:4 Scale

Specifications

- | | | | |
|---|--|---|---|
| A Recessed outlet box (by others) | E Aluminum cutoff visor | J Aluminum splice/ access cover | M Integral high power factor constant current driver |
| B Die-cast aluminum mounting plate | F Die-cast aluminum end plate | K Schedule 40 galvanized steel cantilever arm (7/8" O.D.) | N Extruded aluminum heat sink/housing |
| C Aluminum surface hanger stem | G Die-cast aluminum hub (1.5"W x 1.5" diameter) | L Field serviceable light engine with fraqtir ™ optic | |
| D Extruded aluminum door frame with mitered corners, tempered micro-prismatic glass lens | H Die-cast aluminum splice box | | |

Optic Assembly:

Two-piece extruded aluminum heat sink housing and light engine. Precision formed asymmetric optical light bar of high temperature, water-clear acrylic. Extruded aluminum door frame with tamper-resistant fasteners. Tempered microprismatic glass lens and holographic diffuser with silicone gasket for watertight operation when facing upward or downward.

Finish:

Exterior surfaces – 6 stage pretreatment and electrostatically applied thermoset polyester powder coating for a durable abrasion, fade and corrosion resistant finish. All hardware and components – non-corrosive stainless steel or aluminum.

Electrical:

Integral electronic HPF constant current driver(s), dimming drivers are optional. 84" leads exit one end of housing (0F option, 84" leads exit both ends for feed-through wiring).

For complete driver specifications, see website, reference document [MA-1303](#).

Mounting:

Required 1-1/2" diameter x 1-1/2" aluminum hubs with 1/2" NPT threaded entry, ordered and priced separately. Housing aiming is adjustable – locks with set screws. Alternately, order hubs with surface, pendant or cantilever hangers (see SU2.1). Hangers include aluminum mounting plate, cover plate and hub with 7/8" O.D. steel arm/stem. Specify end kit or intermediate hubs/hangers.

Fixture weight: 3.5 lb/ft (5.2 kg/m).

Standard:

UL listed or CSA certified for wet locations when mounted horizontally. For positions other than horizontal, consult factory. 5 year warranty, maximum ambient temperature 45°C (113°F).

Features

- Watertight operation facing up or down
- Rugged all aluminum and stainless steel construction – polyester powder coat exceeds 1000 hour salt spray test
- Versatile – surface, cantilever or pendant mount
- Several lumen packages that put the light on target

Performance

fraqtir technology uses a combination of refraction and total internal reflection, creating a distribution of light ideal for illuminating surfaces uniformly. Glare is minimized while light delivered to the target is maximized, resulting in high application efficiency.

For LM79 and photometric reports, visit [thelightingquotient.com](#)

