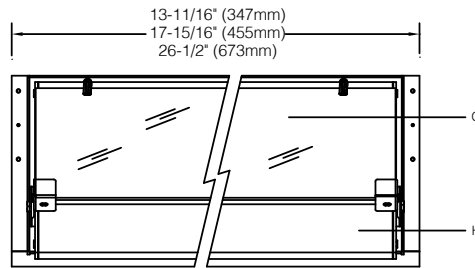
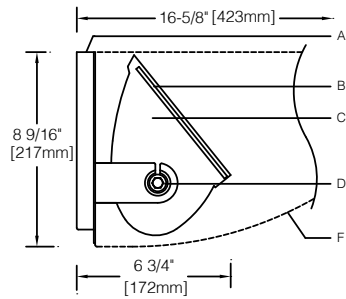
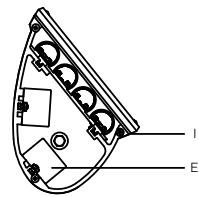


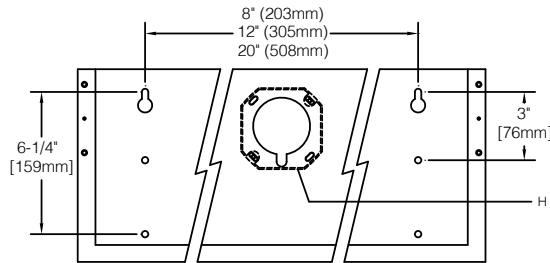
Base Unit 1:8 Scale



Optical Assembly 1:8 Scale

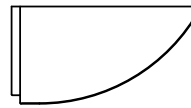


Mounting Plate 1:8 Scale

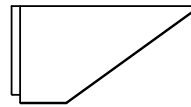


Enclosures 1:16 Scale

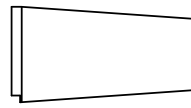
Style "C"



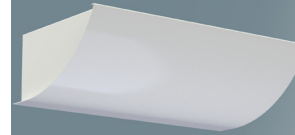
Style "D"



Style "J"



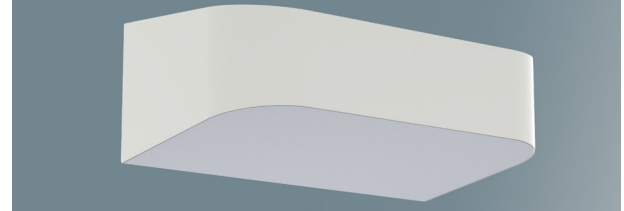
"C" Style



"D" Style



"J" Style



Specifications

- |   |  |  |  |
|---|--|--|--|
| <b>A</b> Formed aluminum yoke/mounting plate (creates reveal at wall) | <b>D</b> Stainless steel hex bolt and spring washers                 | choice of 3 styles or custom                   | <b>I</b> Silicone door gasket (0P option)  |
| <b>B</b> Aluminum door frame  | <b>E</b> Integral electronic LED driver(s)                           | <b>G</b> Clear tempered prismatic glass lens   | <b>J</b> Extruded asymmetric optic         |
| <b>C</b> Stamped aluminum end plates                                  | <b>F</b> Enclosure provides horizontal shielding of lens brightness, | <b>H</b> Extruded aluminum heat sink / housing | <b>K</b> Serviceable light engine          |
|   |  |  | <b>M</b> Recessed junction box (by others) |

Housing and Optic Assembly:

Two-piece extruded aluminum heat sink housing and light engine. Exterior heat sink anodized for maximum emissivity. Precision extruded polymer refractive lens with optimized asymmetric distribution. Light engine may be removed for service or upgrade. Clear Tempered microprismatic glass lens. Stainless steel hardware.

Finish:

Extruded aluminum heat sink/housing, aluminum reveal plates and end plates finished white, black or custom color. Painted surfaces – 6 stage pretreatment and electrostatically applied thermoset polyester powder coating for a durable abrasion, fade and corrosion resistant finish.

All hardware – stainless steel or nickel plated brass.

Mounting:

Aluminum wall plate fastens to suitable structure over recessed outlet box and supports enclosure (mounting hardware and recessed outlet box by others).

Electrical:

Integral electronic HPF thermally protected Class II driver mounted. For complete driver specifications, see website, reference document [MA-1303](#). Optional electronic dimming driver; compatible dimming controls (by others). See website for dimming compatibility and specifications.

Standard:

UL listed or CSA certified for dry locations or specify "0P" option for natatorium / damp use. 5 year warranty, maximum ambient temperature 45°C (113°F).

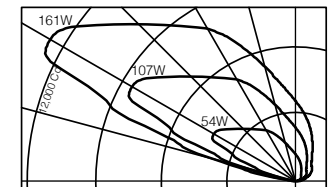
Features

- Crisp geometric sconce enclosures compliment any space or design your own housing
- Forward throw optics with horizontal shielding of lens brightness
- Up to 18,000 delivered lumens @ 160W
- Natatorium / Damp or MRI options available

Performance

Precisely extruded acrylic lens produces an asymmetric distribution ideal for illuminating ceiling surfaces evenly.

For LM79 and photometric reports, visit [thelightingquotient.com](http://thelightingquotient.com)



L90(10k) > 60,000 hrs. @ 25°C per TM-21

