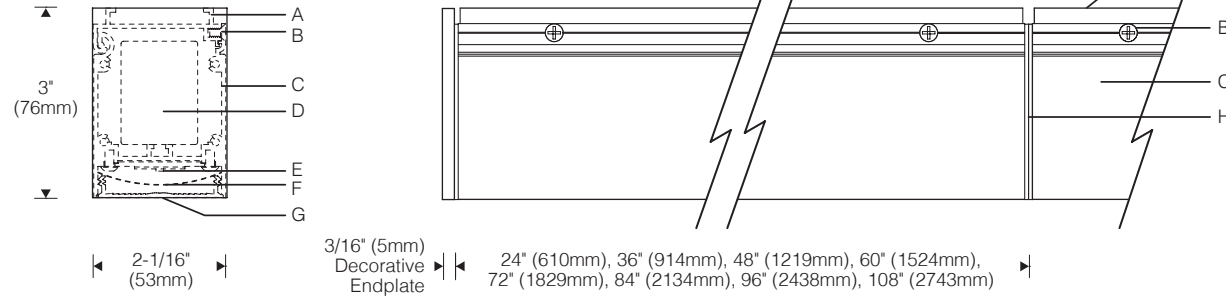
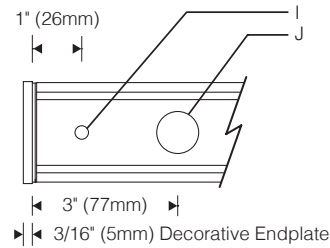


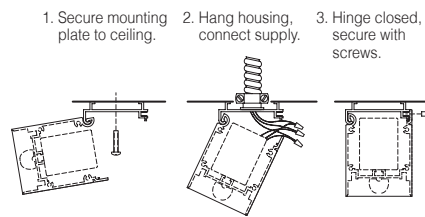
**Style S530** 1:3 Scale



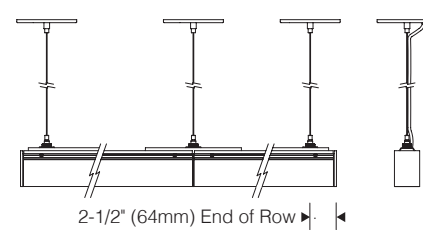
**Top View** 1:4 Scale, H Mount



**Surface Mount** 1:2 Scale



**Cable Mount** 1:16 Scale



**Specifications**

- |                                    |  |   |   |
|------------------------------------|--|---|---|
| 6 Extruded aluminum mounting plate | 9 High efficiency constant current electronic driver | < Snap-in bi-asymmetric acrylic lens; one-way lens optional | > Mounting hole, (3) 9/32" (7mm) diameter |
| 7 Closure screws                   | : LED light engine                                   | = Aluminum reveal plate                                     | ? Knockout, (2) 7/8" (22mm) diameter      |
| 8 Extruded aluminum housing        | ; Holographic diffuser                               |   |   |

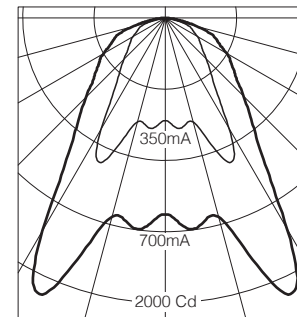
**Features**

- Compact size with integral driver
- Bi-asymmetric distribution – evenly light both sides of aisle
- Light engines serviceable in one-foot increments
- Optional one-way lens for asymmetric illumination at end of row

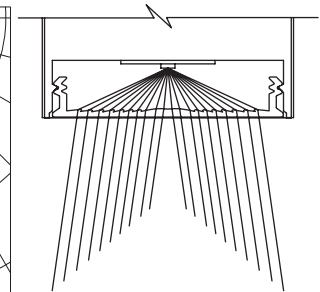


**Performance**

Precisely extruded acrylic lens produces a bi-asymmetric distribution ideal for illuminating both vertical surfaces in grocery aisles, library stack aisles, archives or computer server farms.



L90(10k) > 60,000 hrs.  
@ 25°C per TM-21



For LM79 and photometric reports, visit [thelightingquotient.com](http://thelightingquotient.com)

**Finish:**

Painted surfaces – 6 stage pretreatment and electrostatically applied thermoset powder coat for stable, long lasting and corrosion resistant finish. Extruded aluminum mounting plate, housing, aluminum reveal plates. Housing and internal end plates – extruded high purity aluminum with clear anodized specular finish. All luminaire hardware is stainless steel; all mounting hardware is zinc or cadmium plated.

**Optic Assembly:**

Light engine – extruded aluminum heat sink with LED PCB. Multiple mid-power LEDs are tightly spaced to minimize pixilation. Light engines are removable for replacement or upgrade in one-foot increments. Precision extruded optical lens of high temperature water-clear acrylic. Elliptical distribution holographic diffuser maximizes lateral distribution without sacrificing bi-asymmetric throw.

**Mounting:**

**S** mount – mounting plate fastens flush to ceiling. Unit hinges on plate for hands-free access to wiring.

**X** mount – required cables or pendant stems ordered and priced separately, see pg. SR1.1. Pendant stem – 11/16" O.D.

aluminum, internally threaded. 5" dia. aluminum canopy. Cable – 1/16" dia. 7x7 aircraft cable, field adjustable length. Crossbar with 1/4-20 stud and 5" dia. canopy. For shelf supported bridge or cantilever, consult factory.

Fixture weight: 2.0 lb/ft (3.0 kg/m).

**Electrical:**

Use 90°C wire for supply connections. Integral electronic HPF thermally protected Class II driver. For complete driver specifications, see website, reference document **MA-1303**. Driver/wireway compartment includes one conduit entry at each end. Channel cover removes for access to driver and wiring. Luminaires may be butted end-to-end (connectors by others) for through wiring. Optional #12 AWG prewired modular through wiring with quick connectors. Optional ; compatible dimming controls (by others). See website for dimming compatibility and specifications.

**Standard:**

UL listed or CSA certified for dry location. 5 year warranty, maximum ambient temperature 45°C (113°F).



