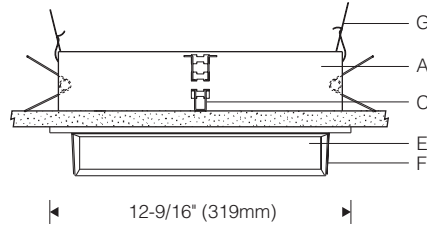
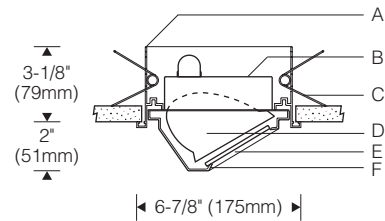
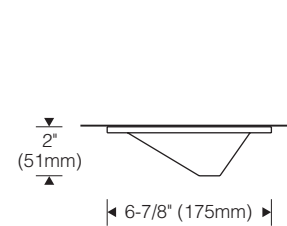




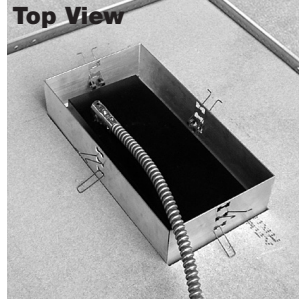
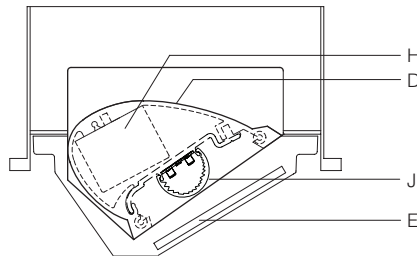
T Mount 1:8 Scale



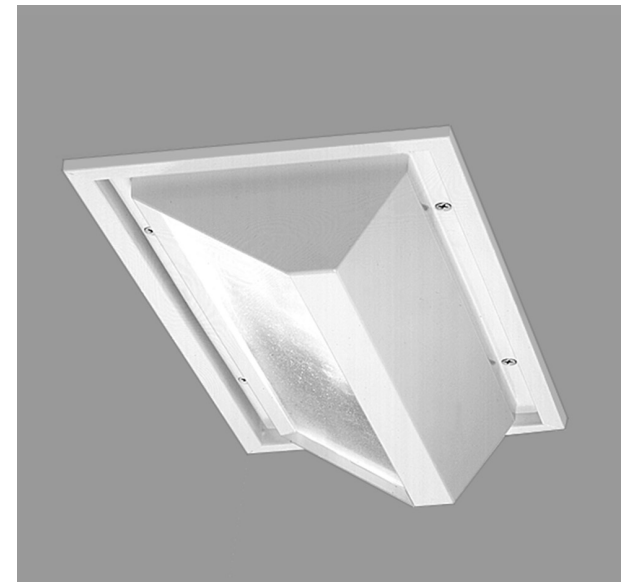
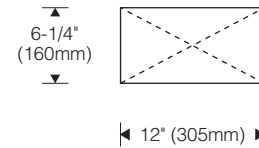
Profile (below ceiling)



Section 1:4 Scale



Ceiling Cutout



Specifications

- A** Extruded aluminum mounting/trim frame
- B** Aluminum back box
- C** Spring clips (4 included)
- D** Extruded aluminum heat/sink/housing
- E** Micro-prismatic tempered glass lens
- F** Die-cast aluminum hood
- G** Supplemental wire supports (by others)
- H** Integral constant current driver
- J** Field serviceable light engine with asymmetric optic

Optic Assembly:

Two-piece extruded aluminum heat sink housing and light engine. Exterior heat sink anodized for maximum emissivity. Precision extruded polymer refractive lens with optimized asymmetric distribution. Light engine may be removed for service or upgrade. Clear Tempered microprismatic glass lens. Stainless steel hardware.

Finish:

Painted surfaces – 6 stage pretreatment and electrostatically applied thermoset polyester powder coating for a durable abrasion, fade and corrosion resistant finish.

Aluminum die-cast hood and extruded aluminum trim frame are finished semigloss white.

Mounting:

Mounting/trim frame installs from below finished ceiling. Retrofits into existing non-accessible ceilings.

Spring clips provided for rigid ceilings (drywall, plaster) up to 1-3/4" (44mm) thick.

Supplemental support wires, bar hangers, etc. (by others) required for accessible ceilings. Where wire suspension is prohibited, order accessory universal mounting brackets for use with 1/2" EMT, 1-1/2" lathing or C channel (by others).

Fixture weight: 5.5 lb (2.5 kg).

Electrical:

Integral electronic HPF constant current driver. For complete driver specifications, see website, reference document [MA-1303](#). Access plate on top of back box with two 1/2" knockouts for supply wiring. Internal splice compartment allows for access to splices below ceiling.

Standard:

CSA Certified for dry locations. Suitable for insulated ceilings (Type IC). 5 year warranty, maximum ambient temperature 45°C (113°F)

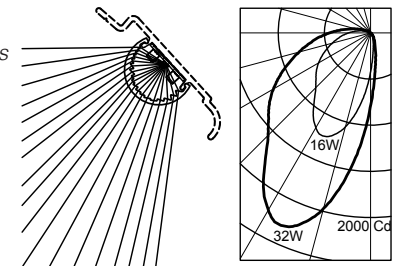
Features

- Evenly lights entire wall – housing aperture is shielded
- Low profile – minimal silhouette focuses attention on the luminous wall, not the luminaire
- Shallow recessed depth – fits under ducts at core walls
- Energy efficient replacement for existing tungsten halogen wall washing luminaires



Performance

Precisely extruded acrylic lens produces an asymmetric distribution ideal for illuminating walls evenly.



L90(10k) > 60,000 hrs. @ 25°C per TM-21

For LM79 and photometric reports, visit theightingquotient.com



To form a Catalog Number

S | 2 | 0 | 5 | - | | | | - | T | - | | | | - | M | - | | | | - | | | | - | | | |

1 2 3 4 5 6 7 8 9 10

Project: _____

Type: _____

1 Source

S = Solid state (LED)

2 Style

205 = Small semi-recessed indoor LED with hood, integral driver

3 Length / Light Output / Power

ORDER CODE	LENGTH	LUMENS	INPUT WATTS	NUMBER OF LEDS	DRIVE CURRENT
L028	12"	880	8	28	175mA
M028	12"	1702	16	28	350mA

Based on 3500K/80+ CRI. [Click here](#) for scaled performance table.

4 Mounting

T = Overlapping trim

5 Finish

- 02 = Semigloss white 13 = Matte Black 22 = Matte White
- 06 = Dark bronze* 15 = Metallic PL = Platinum
- 07 = Silver* 17 = Champagne* 99 = Custom or RAL, consult rep.*
- 08 = Semigloss black 18 = Copper*

02	22*	PL*	07*	15*
08	13*	06*	18*	17*

* = non-cancellable/returnable

6 Voltage

M = 120-277V Universal voltage input

7 Option

- 00 = No options
- 0C = Modified to comply with Chicago plenum code.
- XX = For modification not listed, include detailed description. Consult factory prior to specification.

8 Destination Requirement

- 0 = UL listed or CSA certified for U.S.
- J = UL listed or CSA certified for Canada

9 Color Temperature / CRI

- 827 = 2700K, 80+ CRI 927 = 2700K, 90+ CRI
- 830 = 3000K, 80+ CRI 930 = 3000K, 90+ CRI
- 835 = 3500K, 80+ CRI 935 = 3500K, 90+ CRI
- 840 = 4000K, 80+ CRI 940 = 4000K, 90+ CRI

Note: Additional CCT and CRI options are available; consult factory.

10 Dimming**

- 00 = Non-dimming
- TD = ERP forward phase or reverse phase (120V only), dimming range 100-10% power, compatible controls by others
- ZX = 0-10V analog dimming 120-277V input, dimming range 100%-1%, 0-10V controls by others

REMOTE DRIVER Option:

- EL = eldoLED SOLOdrive 120-277V input, 0-10V analog dimming 100%-0.1% power (controls by others)
- ED = eldoLED SOLOdrive 120-277V input, dimming range 100%-0.1%, DALI controls by others

**Dimming range refers to % power input, % light output will vary.

Refer to Driver Information document [MA-1303](#)

Example

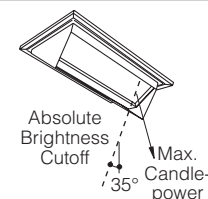
S205-M028-T02-M-00-0-930-TD

Small indoor LED, wall wash luminaire, extruded aluminum heat sink/housing, overlapping ceiling trim. Semigloss white. Integral 120-277V, 350mA dimming driver compatible with line voltage Triac, ELV or 0-10V dimming controls by others., UL listed or CSA certified for U.S., dry location. 3000K/80+ CRI.

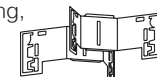
Accessories

Order separately. See Accessories Section for specifications.

ASV02000 = Extended hood visor



ASRBKT00 = Universal mounting brackets (set of two), accepts 1/2" EMT, 1-1/2" lathing, C channel or bar hangers (by others)



AHC000 = Accessory Hanger Channel, pair of standard mounting bars 27" long, 3/4" high, C-channels



elliptipar from The Lighting Quotient
 114 Boston Post Road, West Haven, Connecticut 06516, USA
 Voice 203.931.4455 • Fax 203.931.4464 • thelightingquotient.com

The external shapes of the housings are trademarks of Sylvan R. Shemitz Designs, LLC dba The Lighting Quotient, makers of elliptipar, ambient and fraqtir.

Certain products illustrated may be covered by applicable patents and patents pending. These specifications supersede all prior publications and are subject to change without notice. Copyright © 2021 Sylvan R. Shemitz Designs, LLC, all rights reserved.