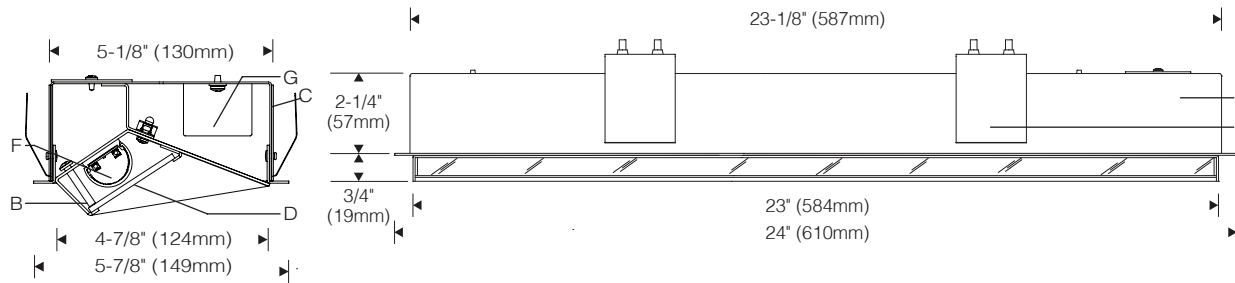
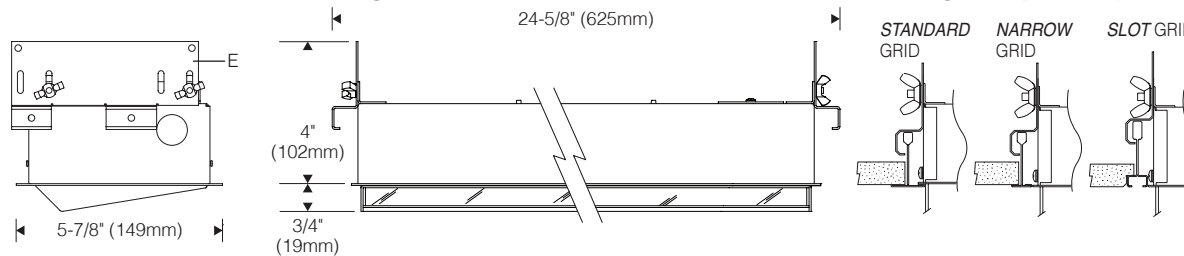


T Mount: Non-accessible Ceiling 1:8 Scale

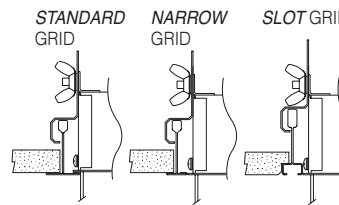


L Mount: Accessible Grid Ceiling 1:8 Scale



ROUGH OPENING (for T and L mount): 23-3/8" (594mm) x 5-3/8" (137mm)

Ceiling Compatibility



Specifications

- A** Aluminum back box/trim frame
- B** Removable aluminum heat sink/housing
- C** Wing mounting bracket (non-accessible ceiling)
- D** Acrylic lens with elliptical diffusion
- E** Adjustable hanger clamps, grid ceiling (L mount)
- F** Field serviceable light engine with asymmetric optic
- G** Integral constant current driver

Features

- Low profile – minimal silhouette focuses attention on the luminous wall, not the luminaire
- Shallow recessed depth – fits under ducts at core walls
- Over 5300 lumens delivered @ only 49W input
- Compatible with lay-in or drywall ceilings



Optical Assembly:

Formed aluminum housing, back box and trim frame; stainless steel hardware and spring mounting clips. Extruded aluminum heat sink, Precision extruded polymer refractive lens with optimized asymmetric distribution. Light engine may be removed for service or upgrade. Acrylic lens with elliptical diffusion maximizes lateral distribution without disturbing asymmetric forward throw.

Finish:

Housing, back box and trim frame finished in choice of matte or semigloss white. Painted surfaces – 6 stage pretreatment and electrostatically applied thermoset polyester powder coating for a durable abrasion, fade and corrosion resistant finish.

Electrical:

Use 90°C wire for supply connections. Integral electronic HPF constant current driver with quick connector. For complete driver specifications, see website, reference document [MA-1303](#). Access plate on top of back box with two 1/2" knockouts for supply wiring. Internal splice compartment allows for access to splices below ceiling.

Mounting:

Luminaire installs from below finished ceiling – up to 1-1/2" (38mm) thick.

T mount provided with overlapping trim for gypsum board/inaccessible ceilings.

L mount provided with overlapping trim and adjustable brackets for T-bar grid/accessible ceilings. Supplemental support wires, bar hangers, etc. (by others) required for accessible ceilings.

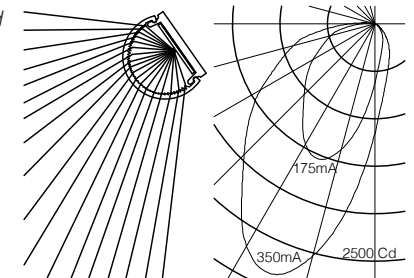
Fixture weight: 5.5 lb (2.5 kg).

Standard:

CSA Certified for dry locations For damp location specify "0P" option. Suitable for insulated ceilings (Type IC). 5 year warranty, maximum ambient temperature 45°C (113°F)

Performance

Precisely extruded acrylic lens produces an asymmetric distribution ideal for illuminating vertical surfaces evenly from top to bottom.

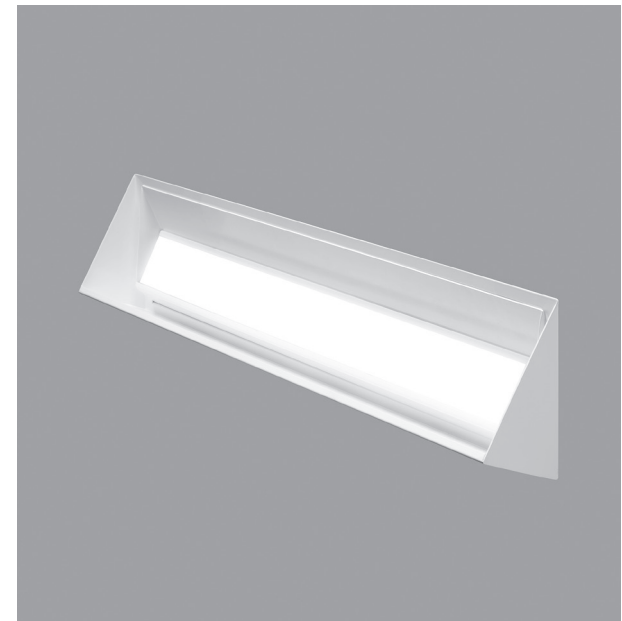
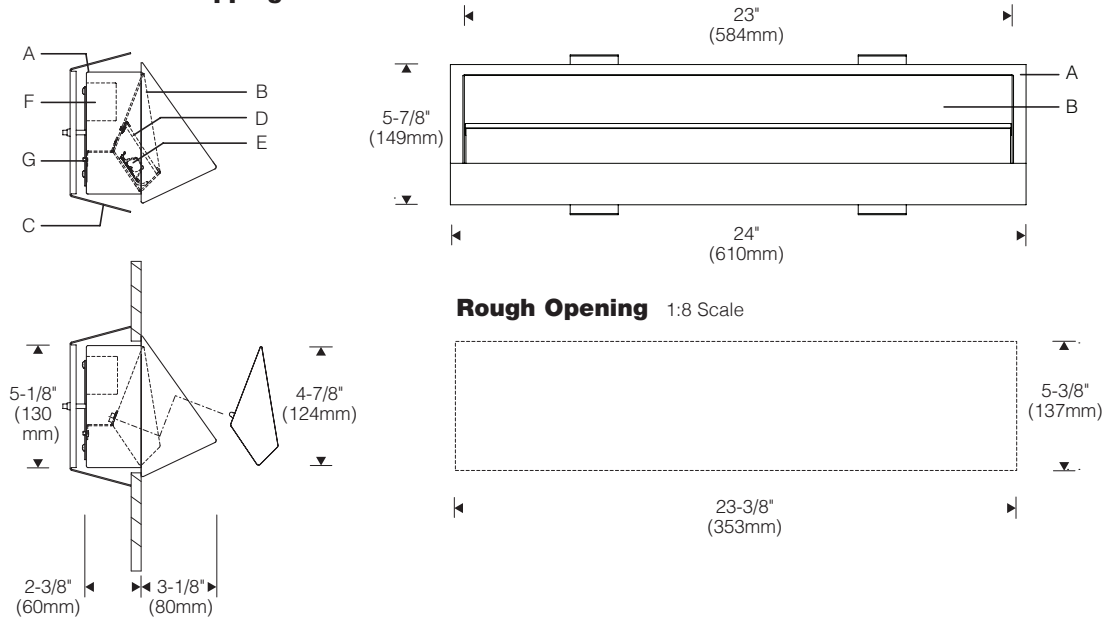


L90(10k) > 60,000 hrs. @ 25°C per TM-21

For LM79 and photometric reports, visit thelightingquotient.com



T Mount: Overlapping Trim 1:8 Scale



Specifications

- | | | | |
|--|--|---|---|
| A Aluminum back box/trim frame/cutoff visor | C Wing mounting bracket (non-accessible wall) | E Field serviceable light engine with asymmetric optic | F Integral constant current driver |
| B Removable aluminum heat sink/housing | D Acrylic lens with elliptical diffusion | G Wiring access plate | |

Optical Assembly:

Formed aluminum housing, back box and trim frame; stainless steel hardware and spring mounting clips. Extruded aluminum heat sink, Precision extruded polymer refractive lens with optimized asymmetric distribution. Light engine may be removed for service or upgrade. Acrylic lens with elliptical diffusion maximizes lateral distribution without disturbing asymmetric forward throw.

Finish:

Housing and back box/trim frame/cutoff visor finished in choice of matte or semigloss white. Painted surfaces – 6 stage pretreatment and electrostatically applied thermoset polyester powder coating for a durable abrasion, fade and corrosion resistant finish.

Electrical:

Use 90°C wire for supply connections. Integral electronic HPF constant current driver with quick connector. Access plate on rear of back box with two 1/2" knockouts for supply wiring. Internal splice compartment allows for access to splices behind wall. For complete driver specifications, see website, reference document [MA-1303](#).

Mounting:

Luminaire installs from below finished ceiling – up to 1-1/2" (38mm) thick.

T mount provided with overlapping trim and spring clips.

Fixture weight: 5.5 lb (2.5 kg).

Standard:

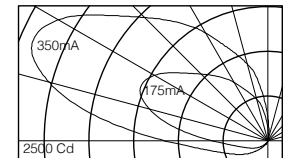
UL listed or CSA certified for dry locations. Suitable for insulated walls (Type IC). 5 year warranty, maximum ambient temperature 45°C (113°F).

Features

- Packs a punch at over 5300 lumens (3500K/80+CRI)
- Less than 4 inch projection – ADA compliant
- Patented asymmetric optics ensure a uniform ceiling brightness
- Shallow recessed depth (2-3/8") fits into most walls

Performance

Precisely extruded acrylic lens produces an asymmetric distribution ideal for illuminating vertical surfaces evenly from top to bottom



L90(10k) > 60,000 hrs. @ 25°C per TM-21

For LM79 and photometric reports, visit thelightingquotient.com

