

A·L

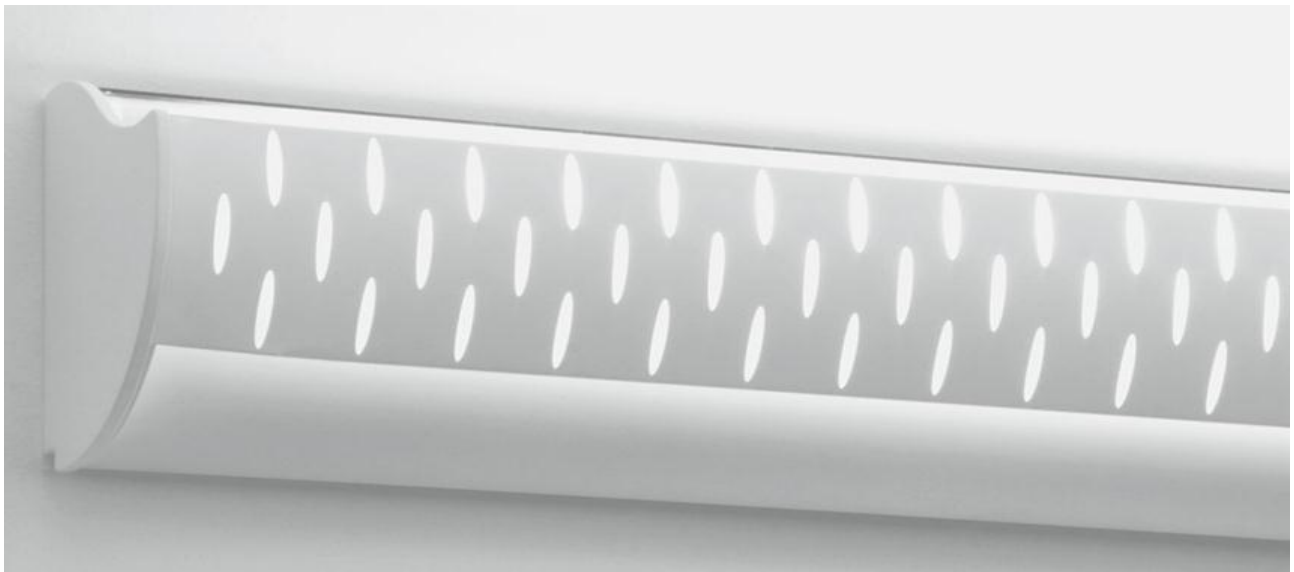
ARCHITECTURAL LIGHTING

hanleyAwood
INSIDE: PRODUCT ISSUE
• NATIONAL MUSEUM
OF AMERICAN JEWISH
HISTORY • FROM THE
ARCHIVE • THE LIGHTING
SUPPLY CHAIN •
DANIEL GELMAN



A·L
ARCHITECTURAL LIGHTING

harleywood
INSIDE: PRODUCT ISSUE
• NATIONAL MUSEUM
OF AMERICAN JEWISH
HISTORY • FROM THE
ARCHIVE • THE LIGHTING
SUPPLY CHAIN •
DANIEL GELMAN



This ADA-compliant uplight is well suited for hospital and school corridors. Optical control is provided by an internal aluminum reflector that emits maximum light across a horizontal plane with great uniformity. Measuring 5 inches high by 4 inches deep, there are four decorative patterns for the front shield. A clear UV-resistant acrylic lens covers the top of the fixture for safety and easy maintenance. The luminaire is available in 2-, 3-, and 4-foot lengths and can be used with T5 (14W, 21W, or 28W) and T5HO (24W, 39W, or 55W) fluorescent lamps. The fixture has an integral electronic dimming ballast and an optional dimming feature. thelightingquotient.com