

Seattle Art Museum Olympic Sculpture Park PACCAR Pavilion, Seattle, WA

The Application

The fixture in this case is our standard T151-0250 250 watt tungsten halogen lamp. The fixtures are mounted inside the building on a custom cantilever designed to mount on the vertical structural columns. The design concept was to primarily light the exterior extended roof deck and some secondary inside ceiling surfaces with luminaires located around the perimeter of the glass curtain wall. The objective was to light the exterior perimeter, which ultimately led to contributing some indirect light to the interior space.

The Request

The Lighting Quotient was asked to provide a cantilevered mounting solution to attach to the vertical structural columns and minimize visual clutter. Also part of the request was to configure cantilevers which would support both single and double luminaires. Lastly, we had to coordinate with the column manufacture to ensure mounting features match for seamless in field installation.

The Custom Solution

In this case, we worked closely with the architect and structural column manufacture to configure a cantilever assembly to secure to mounting features provided by the column manufacture. Early involvement and coordination allowed the column manufacture to provide the mating mounting features needed to secure our cantilever mounting plate to the column. By locating the mounting on the outer side of the column, the mounting detail is located where it is least visible from the internal exhibit space. (We provided both two-sided cantilevers and single-sided cantilevers. Twin assemblies help minimize the mounting locations.) The fixtures were supplied with wire leads long enough to chase through the cantilever arm to a splice box within the column. We also powder coated the luminaires and cantilevers to match the columns.



Architect: Weiss/Manfredi Architecture/
Landscape/Urbanism
Lighting Design: Brandston Partnership, Inc.
Photographer: Ben Benschneider

CATALOG NUMBER:

T151 - 0250 - X - 99 - A - VX - 0

STYLE	LAMP	MOUNT	FINISH	VOLTAGE	OPTION	STANDARD
SEE PAGE U 1.0	(1)250W QUARTZ	CANTI- LEVER	PLEASE CONFIRM	120V	SEE BELOW	UL

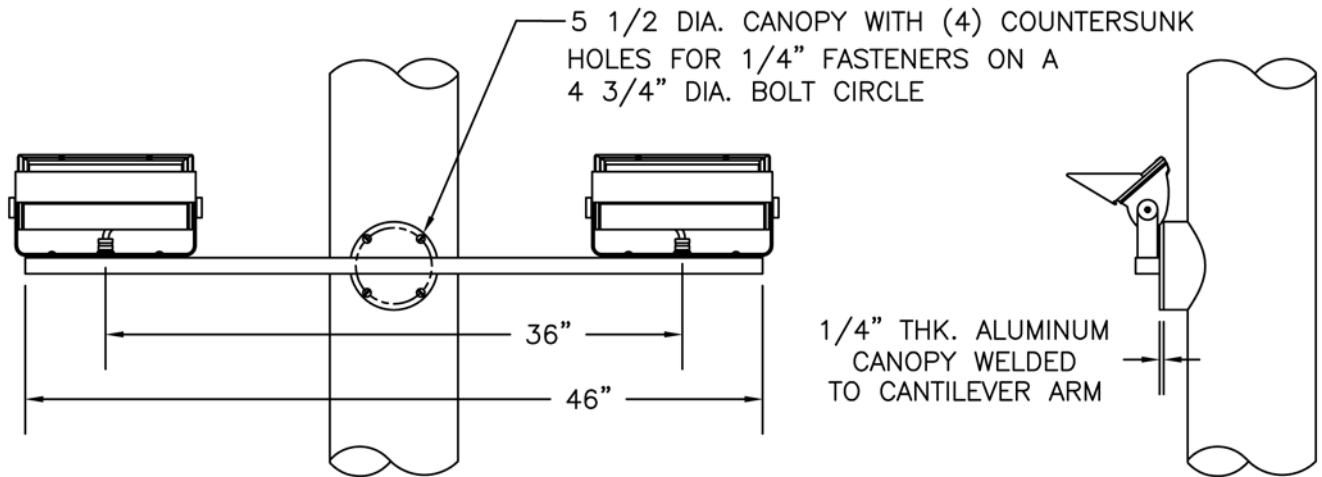
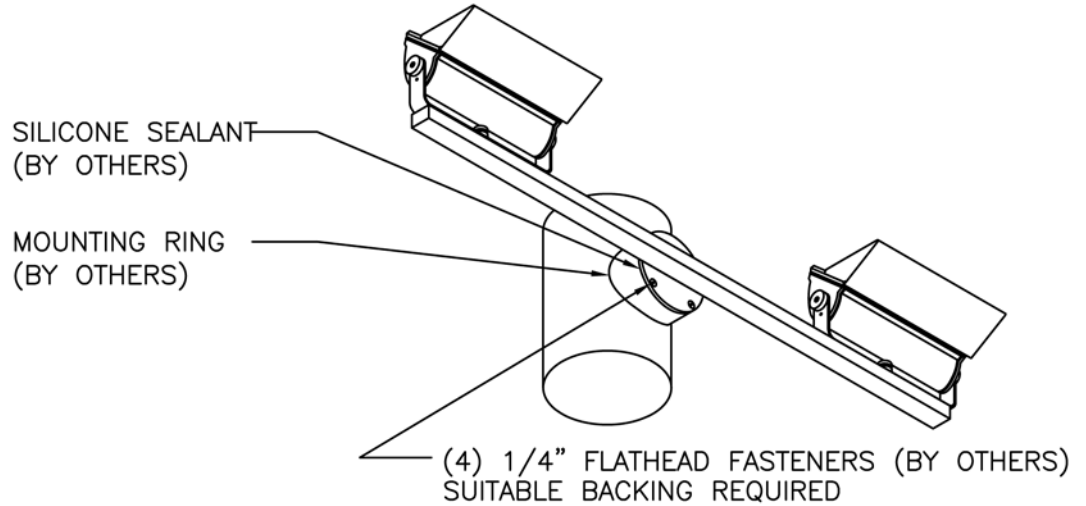
VX=MODIFIED FOR USE WITH CUSTOM ACS CANTILEVER PER APS-A-3068B.

ACCESSORY CATALOG NUMBER:

ACS - 99 - 36 - XX - 0

STYLE	FINISH	LENGTH	OPTION	STANDARD
SEE PAGE OA 4.0	PLEASE CONFIRM	36"	SEE BELOW	UL

XX=MODIFIED FOR USE WITH T151 UPLIGHT PER APS-A-3068B.



© COPYRIGHT SYLVAN R. SHEMITZ DESIGNS, INC. 2005

ORDERING INFORMATION

- 1.) REFERENCE APS-A-3068B
- 2.) ACCESSORIES REQUIRED: [PER FIXTURE]
 - A.) QTY(1) ACS-99-36-XX0

Custom

APPROVALS:

CONFIDENTIAL PROPRIETARY INFORMATION
 THE INFORMATION HEREIN IS OF A PROPRIETARY NATURE AND IS SUBMITTED IN CONFIDENCE FOR USE BY OUR CLIENTS, CUSTOMERS OR VENDORS ONLY. UNAUTHORIZED REPRODUCTION, PUBLICATION, DISTRIBUTION OR DISSEMINATION, IN WHOLE OR IN PART, IS EXPRESSLY PROHIBITED. THE INFORMATION CONTAINED HEREIN IS AND REMAINS THE PROPERTY OF ELLIPTIPAR, A DIVISION OF SYLVAN R. SHEMITZ DESIGNS, INC. AND RECEIPT OR POSSESSION OF THIS INFORMATION CONFERS NO RIGHT IN OR LICENSE TO USE OR TO DISCLOSE TO OTHERS THE SUBJECT MATTER CONTAINED HEREIN FOR ANY BUT AUTHORIZED PURPOSES. ALL RIGHTS RESERVED

TITLE: OLYMPIC SCULPTURE PARK
T151

DRAWING NUMBER: APS-A-3068B DR. BY: GLM SCALE: 1 : 12

DATE: 10-3-05

REVISIONS	
A	FIRST SUBMITTAL
B	ADDED SEALANT NOTE
C	
D	

elliptipar[®]
...there is no equal™

114 BOSTON POST RD, WEST HAVEN, CONNECTICUT, 06516