

**Fluorescent Remote Ballast Dimensions**

Lamp Type	Ballast Type	Lamp Watts	Max. Wire Distance ①	Overall Dimensions			Mounting Dim.		Dia-gram	Notes
				L ("A")	W ("C")	H ("H")	L ("B")	W ("D")		

**Non-Dimming**

Quad Tube Compact	Electronic	26	9'	12"	3-3/8"	2"	10-3/8"	2"	1	②
Hex Tube Compact	Electronic	32, 42	9'	12"	3-3/8"	2"	10-3/8"	2"	1	②
Long Twin Tube	Electronic	36/39, 40, 50, 55	12'	12"	3-3/8"	2"	10-3/8"	2"	1	②
Long Twin Tube	Electronic	80 (only)	12'	21-5/8"	3-1/8"	1-5/8"	19-3/8"	1-3/4"	2	②
T8 Linear	Electronic	17, 25, 32, 40	18'	12"	3-3/8"	2"	10-3/8"	2"	1	②
T5 Linear	Electronic	14, 21, 28, 35	18'	21-5/8"	3-1/8"	1-5/8"	19-3/8"	1-3/4"	2	②
T5 HO Linear	Electronic	24, 39, 55, 80	18'	21-5/8"	3-1/8"	1-5/8"	19-3/8"	1-3/4"	2	②

**Dimming**

Hex Tube Compact	Electronic	32, 42	3'	12"	3-3/8"	2"	10-5/8"	2"	1	②
Long Twin Tube	Electronic	36/39, 40, 50	3'	12"	3-3/8"	2"	10-5/8"	2"	1	②
T8 Linear	Electronic	17, 25, 32, 40	7'	12"	3-3/8"	2"	10-5/8"	2"	1	②
T5 Linear	Electronic	14, 21, 28, 35	7'	21-1/2"	3-1/8"	1-5/8"	19-3/8"	1-3/4"	2	②
T5HO Linear	Electronic	24, 39, 55	7'	21-1/2"	3-1/8"	1-5/8"	19-3/8"	1-3/4"	2	②

**Notes:**

① Distance shown is for maximum one-way wire length from ballast to furthest lamp socket. Depending on the length of lamp/reflector and exit location of the wire leads, the maximum distance from luminaire to ballast will be less. See individual luminaire data pages for maximum remote ballast mounting distance.

② Manufacturer/model of furnished electronic ballast(s) shall be at **elliptipar's** discretion and shall meet or exceed the following criteria:

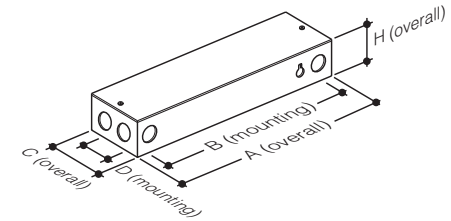
- Total harmonic distortion (THD) < 20%
- Power factor (PF) > 0.90
- Ballast factor (BF) > 0.85
- Current crest factor (CF) < 1.7
- Sound rating A or better
- ANSI, IEEE, and FCC compliant for electronic interference (EMI) and radio frequency interference (RFI)
- UL listed or CSA certified depending upon destination
- Minimum 3 year ballast manufacturer's limited warranty

For a specifically named ballast manufacturer and/or model, consult your local sales representative for availability and lead time.

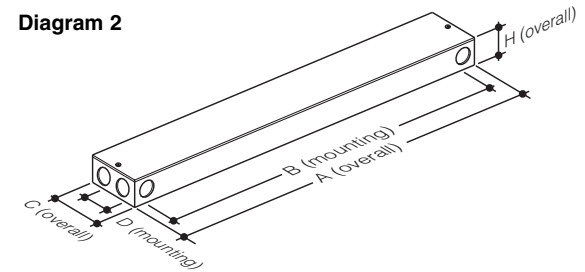
**Remote Ballast Installation:**

- Use wire rated for at least 90°C for supply connections.
- When installing more than one ballast in a common area, maintain minimum six-inch spacing between ballasts. Provide ventilation in area where ballasts are installed.

**Diagram 1**



**Diagram 2**



# Indoor Ballast Information Metal Halide

Diagram 1

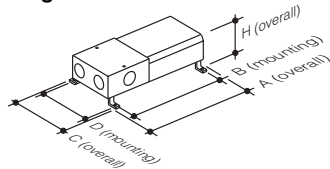


Diagram 2

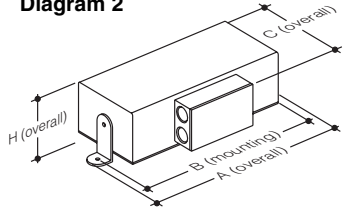


Diagram 3

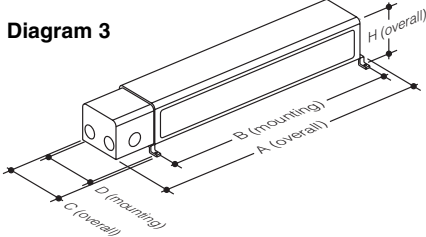


Diagram 4

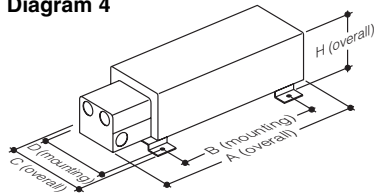
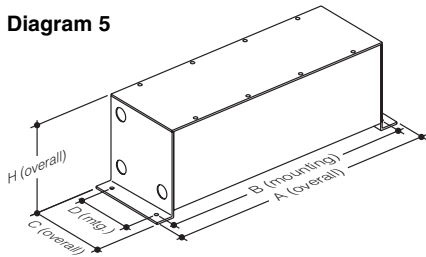


Diagram 5



Lamp Watts	Lamp Code	Voltage Code	Input Voltages	Option ④	Ballast Type	Remote Distance	Sound Rating	Diagram	Overall Dimension			Mounting Dim.		Notes
									L (A)	W (C)	H (H)	L (B)	W (D)	
35W	035G	1, 2	120-277V	00, V0	electronic	15' (4.5m)	A	1	9-5/16"	4-1/2"	2-1/4"	8-1/2"	4"	①
		1, 2	120-277V	0Q, VQ	electronic	15' (4.5m)	A	5	13-7/16"	6-3/8"	4"	12-3/16"	n/a	①
		A, B	120/277V	00, V0	HX-HPF, encapsulated	10' (3m)	B	3	14"	4-1/2"	3"	11-1/8"	4"	①②
		A, B	120/277V	0H, VH	HX-HPF, <b>open</b> core and coil	50' (15m)	n/a	4	13-13/16"	5-3/4"	3-9/16"	9-9/16"	5"	①
70W	070G	1, 2	120-277V	00, V0	electronic	15' (4.5m)	A	1	9-5/16"	4-1/2"	2-1/4"	8-1/2"	4"	①
		1, 2	120-277V	0Q, VQ	electronic	15' (4.5m)	A	5	13-7/16"	6-3/8"	4"	12-3/16"	n/a	①
		A, B	120/277V	00, V0	HX-HPF, encapsulated	20' (6m)	B	3	14"	4-1/2"	3"	11-1/8"	4"	①②
		A, B	120/277V	0H, VH	HX-HPF, encapsulated	50' (15m)	B	3	14"	4-1/2"	3"	11-1/8"	4"	①②
150W	150G	1, 2	120-277V	00, V0	electronic	15' (4.5m)	A	1	9-5/16"	4-1/2"	2-1/4"	8-1/2"	4"	①
		1, 2	120-277V	0Q, VQ	electronic	15' (4.5m)	A	5	16-1/4"	4-3/16"	3"	13-7/8"	2-1/4"	①
210W	210C	U	180-305V	00, V0	electronic dimming (100-50%)	30' (9m)	A	5	18-3/8"	5-1/2"	6-1/4"	17-3/16"	4"	①
		U	180-305V	0Q, VQ	electronic dimming (100-50%)	30' (9m)	A	5	18-3/8"	5-1/2"	6-1/4"	17-3/16"	4"	①
250W	250C	A, B	120/277V	00, V0, 0Q, VQ	CWA, <b>potted</b> core and coil	50' (15m)	B	5	18"	5-1/2"	6-1/4"	17"	4"	
		A, B, E, G	120/208/240/277V	00, V0, 0Q, VQ	CWA, <b>potted</b> core and coil	50' (15m)	n/a	5	18"	5-1/2"	6-1/4"	17"	4"	
		U	180-305V	00, V0	electronic dimming (100-50%)	15' (4.5m)	A	5	16-1/8"	4"	2-3/4"	13-7/8"	2-1/4"	①
315W	315C	U	180-305V	00, V0	electronic dimming (100-50%)	30' (9m)	A	5	16-1/8"	4"	2-3/4"	13-7/8"	2-1/4"	①
		U	180-305V	00, V0	electronic dimming (100-50%)	30' (9m)	A	5	18-3/8"	5-1/2"	6-1/4"	17-3/16"	4"	
		U	180-305V	0Q, VQ	electronic dimming (100-50%)	30' (9m)	A	5	18-3/8"	5-1/2"	6-1/4"	17-3/16"	4"	
320W	320P	A, B, E, G	120/208/240/277V	00, V0	CWA, <b>potted</b> core and coil	50' (15m)	B	5	18-3/8"	5-1/2"	6-1/4"	17-3/16"	4"	
		U	180-305V	00, V0	electronic dimming (100-50%)	15' (4.5m)	A	1	11-3/4"	5-1/4"	2-5/8"	8-7/8"	4-1/2"	
		U	180-305V	0Q, VQ	electronic dimming (100-50%)	15' (4.5m)	A	5	16-1/8"	4"	2-3/4"	13-7/8"	2-1/4"	①
350W	350P	U	180-305V	00, V0	electronic dimming (100-50%)	30' (9m)	A	5	18-3/8"	5-1/2"	6-1/4"	17-3/16"	4"	
		U	180-305V	00, V0	electronic dimming (100-50%)	15' (4.5m)	A	1	11-3/4"	5-1/4"	2-5/8"	8-7/8"	4-1/2"	①
		U	180-305V	0Q, VQ	electronic dimming (100-50%)	15' (4.5m)	A	5	16-1/8"	4"	2-3/4"	13-7/8"	2-1/4"	①
400W	400C	A, B, E, G	120/208/240/277V	all	CWA, <b>potted</b> core and coil	50' (15m)	B	5	18-3/8"	5-1/2"	6-1/4"	17-3/16"	4"	
		A, B, E, G	120/208/240/277V	00, V0	CWA, <b>potted</b> core and coil	50' (15m)	B	5	18-3/8"	5-1/2"	6-1/4"	17-3/16"	4"	
		U	180-305V	00, V0	electronic dimming (100-50%)	15' (4.5m)	A	1	11-3/4"	5-1/4"	2-5/8"	8-7/8"	4-1/2"	①
2 x 400W	240P	U	180-305V	00, V0	electronic dimming (100-50%)	15' (4.5m)	A	5	16-1/8"	4"	2-3/4"	13-7/8"	2-1/4"	①
		U	180-305V	0Q, VQ	electronic dimming (100-50%)	15' (4.5m)	A	5	16-1/8"	4"	2-3/4"	13-7/8"	2-1/4"	①
		A, B, E, G	120/208/240/277V	all	(2) CWA, <b>potted</b> core and coil	50' (15m)	B	5	25-3/16"	5-1/2"	6-1/4"	24-3/16"	4"	③
		A, B, E, G	120/208/240/277V	00, V0	(2) CWA, <b>potted</b> core and coil	50' (15m)	B	5	25-3/16"	5-1/2"	6-1/4"	24-3/16"	4"	③
1000W	1000W	U	180-305V	00, V0	(2) electronic dimming (100-50%)	15' (4.5m)	A	(2) 1	11-3/4"	5-1/4"	2-5/8"	8-7/8"	4-1/2"	①③
		U	180-305V	0Q, VQ	(2) electronic dimming (100-50%)	15' (4.5m)	A	(2) 5	16-1/8"	4"	2-3/4"	13-7/8"	2-1/4"	①③
1000W	1000W	A, B	120-277V	00, V0, 0Q, VQ	CWA, <b>potted</b> core and coil	200' (60m)	C	5	18-1/8"	6-1/2"	6"	17-1/8"	4"	⑤

**Notes:** ① If luminaire to ballast distance is to be greater than lead length provided, limit the total wire length between lamp and ballast to the maximum marked on the ballast. Use UL listed/CSA certified 600V wire sized and enclosed in accordance with local and national electric codes. Do not run wires around sharp corners of grounded metal without an additional insulating sleeve over the "hot" wire. ② Maximum dimensions are shown for reference only. Exact dimensions vary with ballast manufacturer. ③ Luminaire supplied with two ballasts enclosed in a single housing. ④ See individual data page for complete explanation of option codes. ⑤ Based on #12 AWG wire.

**Remote Ballast Installation:** • Use wire rated for at least 90°C for supply connections. • When installing more than one ballast in a common area, maintain minimum 6" spacing between ballasts (12" for pulse-start). • Provide installation in area where ballasts are installed.

