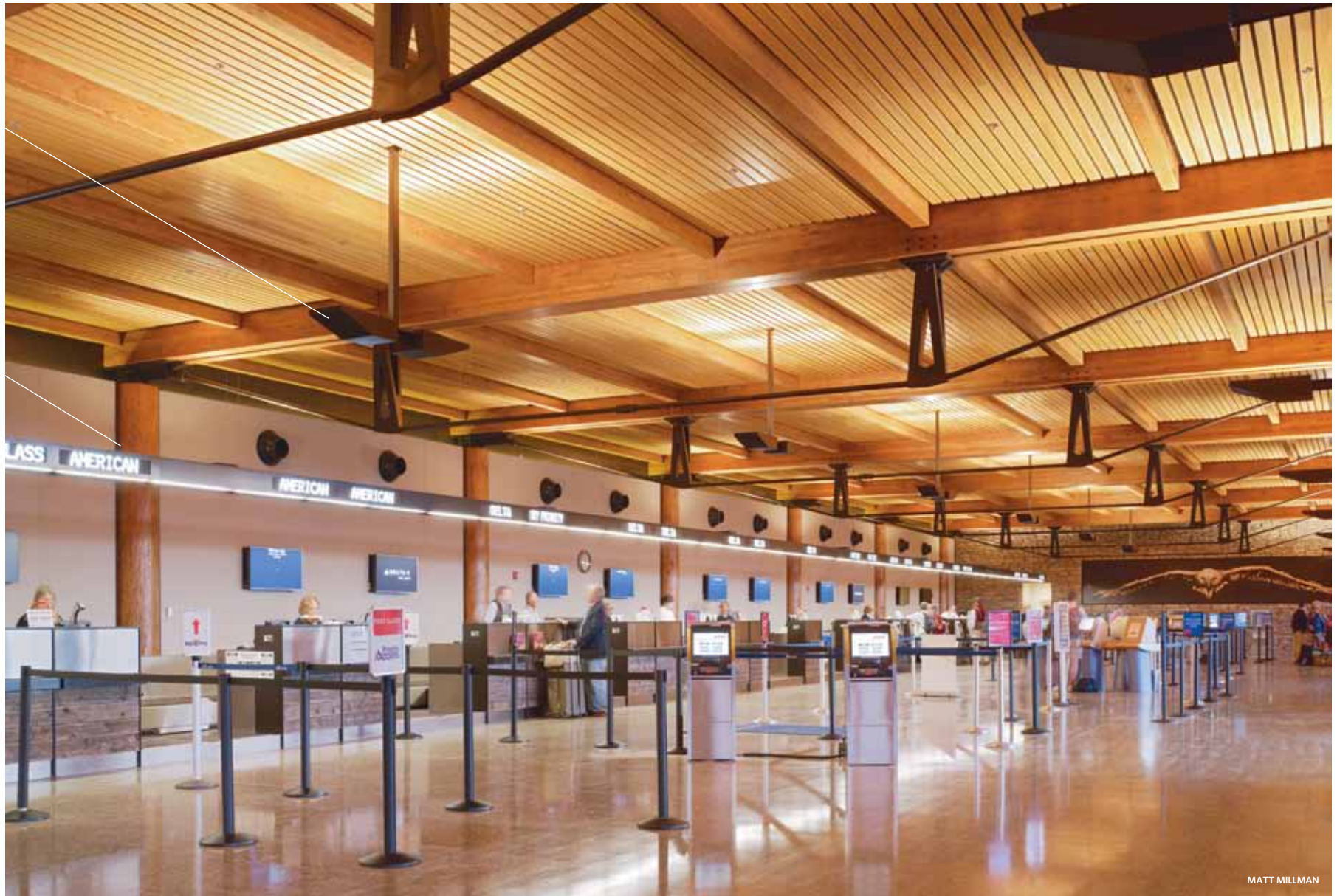


Style M452  
with custom  
enclosures

Style M101  
with custom  
enclosures  
at columns



MATT MILLMAN

**Architect:** Gensler (Colorado office)  
with Carney Logan Burke Architects  
**Engineer:** Swanson Rink  
**Photography:** Matt Millman and  
Tim Griffith (where indicated)

**Ticketing Area:**

Plan: 87' wide x 295' long x 17' high, consisting of approx. (70) 6' x 14' ceiling bays  
Lighting: (46) M452-150G-S-06-2-00-0 with two fixtures per custom shroud (by others)  
(12) M101-150G-E-81-2-V0-0 with custom color on wood columns  
Estimated illuminance: 25 fcai on wood ceiling; 7.5 fcai on floor  
Estimated power density: 0.75 W/sf (uplights only)

# elliptipar Styles M452, M101

Jackson Hole Airport is located within Grand Teton National Park, offering convenient access to neighboring Yellowstone Park as well. With such natural surroundings, a vernacular architectural style and LEED certification were important goals for the terminal's recent \$30 million expansion.

The new facility reflects western heritage with clean lines and lower profiles executed in warm wood and stone elements that complement the landscape. LEED Silver certification was achieved based largely on reduced energy and water consumption and the use of sustainable building materials.

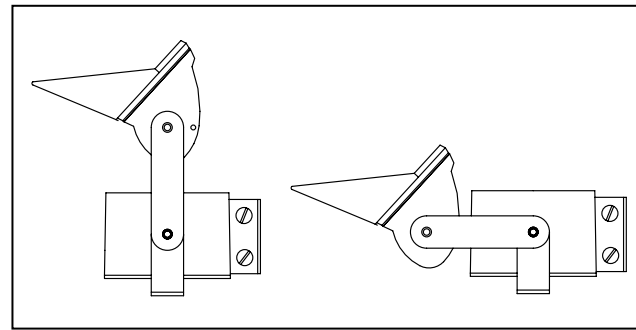
Pairs of **elliptipar Style M452s** in custom shrouds (by others) light the ceiling of the ticketing hall. Compact yet powerful, the **M452s** with 150W ceramic metal halide lamps project light across the exposed wood structure to give the ceiling a warm, inviting glow.

Cantilever mounted **Style M452s** with 70W ceramic metal halide lamps, also in custom shrouds, uplift the terminal's entrance canopy, creating unobtrusive illumination against the night sky.

The **M452** is Cradle to Cradle Certified<sup>SM</sup>, designating environmental safety and reusability in component materials.



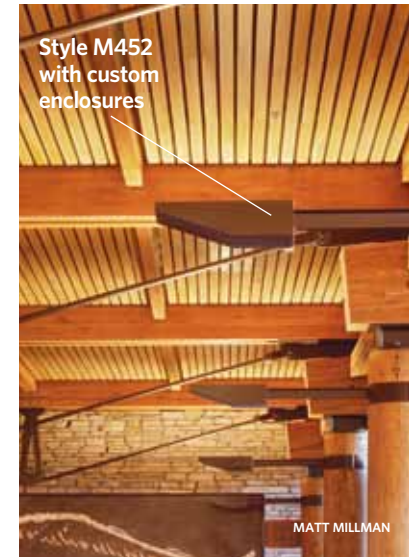
Uplighting the cantilevered canopy asymmetrically from the support columns helps to prevent spill light from obscuring the night sky or mountain vistas.



Although normally an exterior fixture listed for wet locations, the S-mount version of the **M452** lends itself to surface mounting on/in special architectural elements.



Cradle to Cradle Certified<sup>SM</sup> is a certification mark licensed by the Cradle to Cradle Products Innovation Institute.



3000K ceramic metal halide lamps with an 81 CRI enhance the warm tones of the wood structure.